

# CT85 SERIES DOUBLE SHAFT FAN MOTORS

New Product Release

August 2004

## CT85 SERIES DOUBLE SHAFT FAN MOTORS



**FEATURES:**

- LOW NOISE
- DESIGNED TO INTERNATIONAL STANDARDS
- LONG BEARING LIFE
- INTERCHANGEABLE WITH OTHER BRANDS
- PERMANENT SPLIT CAPACITOR DESIGN
- RESILIENT MOUNT WITH CRADLE
- DYNAMICALLY BALANCED ROTORS
- AUTO RESET THERMAL OVERLOAD
- 3 SPEED TAPPED WINDING

### CT85 SERIES DOUBLE SHAFT FAN MOTORS REPLACEMENT CHART

CMG PRODUCT CODE	REPLACES FASCO	REPLACES KULTHORN
CT85-55008T-C02	8061S111-80	
CT85-55010V-C02	8061S083-80	
CT85-55013V-C02	8061S122-80	KHF2D4701
CT85-55025V-C02	8061S019-80	KHF2F4701
CT85-55031V-C02	8061S109-01, 8061S109-04, 808555NVA-A16, 8061S109-08	HF2J4702K
CT85-55060V-C02	8061S082-80, 8061S082-15, 808555PVA-A11	HF2T4702K
CT85-55075V-C02	8061S128-80, 808555QVA-A11	KHF2T4704
CT85-57004T-C02	8061S134-80	
CT85-57020V-C02	8061S004-80	

## DOUBLE SHAFT – MOTOR SPECIFICATIONS

PRODUCT CODE	WATTS OUT	FULL LOAD AMPS	SPEED RPM	CAP SIZE UF/V	CAP SUPPLIED	STANDARD DIRECTION ROTATION	REVERSIBLE	VOLTAGE
CT85-55008T-C02	80	0.8	1350	4/440	YES	CW LEAD END	YES	240
CT85-55010V-C02	100	1.1	1370	2/440	YES	ACW LEAD END	YES	240
CT85-55013V-C02	130	1.2	1370	4/440	YES	ACW LEAD END	YES	240
CT85-55025V-C02	250	1.8	1300	6/440	YES	CW LEAD END	YES	240
CT85-55031V-C02	315	2.5	1350	4/440	YES	ACW LEAD END	YES	240
"	290	2.6	1337	2/440	NO	ACW LEAD END	YES	240
"	350	2.52	1360	6/440	NO	ACW LEAD END	YES	240
"	365	2.67	1366	8/440	NO	ACW LEAD END	YES	240
"	425	3.5	1300	10/440	NO	ACW LEAD END	YES	240
CT85-55060V-C02	600	4.0	1330	15/440	YES	ACW LEAD END	YES	240
CT85-55075V-C02	750	4.9	1360	20/440	YES	ACW LEAD END	YES	240
CT85-57004T-C02	40	0.45	900	2/440	YES	CW LEAD END	YES	240
CT85-57020V-C02	200	2.0	890	4/440	YES	ACW LEAD END	YES	240

**ACTROL**  
 Sales Offices

**Victoria**

19 King Street, Blackburn 3130  
 38B Autumn Street, Geelong West 3218  
 U3 & U4/26-28 Roberna Street, Moorabbin 3189  
 7 Enterprise Court, Mulgrave 3170  
 2 Reserve Street, Preston 3072  
 U2/95 Drummond Road, Shepparton 3630  
 U4/88 Dynon Road, West Melbourne 3003  
 U2/410 Kiewa Street, Albury 2640

Ph: 03 9877 3487  
 Ph: 03 5223 1088  
 Ph: 03 9553 0422  
 Ph: 03 9560 3800  
 Ph: 03 9480 6355  
 Ph: 03 5831 3727  
 Ph: 03 9376 5222  
 Ph: 02 6021 5522

**Tasmania**

5 Wilmot Street, Launceston 7250

Ph: 03 6344 7088

**New South Wales**

49 St. Hilliers Road, Auburn 2144  
 U4/37 O'Riordan Street, Alexandria 2015  
 U6/80 Reserve Road, Artarmon 2064  
 81-83 Broadmeadow Road, Broadmeadow 2292  
 24 Cobborah Road, Dubbo 2830  
 U4/305 Manns Road, Gosford 2250  
 U5/12 Robertson Place, Penrith 2750  
 U2/28 Skinner Avenue, Riverwood 2210  
 U3/17-25 Lake Albert Road, Wagga Wagga 2650

Ph: 02 9649 3554  
 Ph: 02 9699 2644  
 Ph: 02 9906 6011  
 Ph: 02 4961 1441  
 Ph: 02 6882 4666  
 Ph: 02 4324 5768  
 Ph: 02 4721 1850  
 Ph: 02 9584 9111  
 Ph: 02 6921 9272

**ACT**

72 Kembla Street, Fyshwick 2609

Ph: 02 6280 4176

**Queensland**

32 Perrin Place, Salisbury 4107  
 U4/2 Kenworth Place, Brendale 4500  
 8 Electra Street, Bundaberg 4670  
 248 Hartley Street, Cairns 4870  
 43 Butterfield Street, Herston 4006  
 U1/11 Cemetery Road, Mackay 4740  
 81 Wisers Road, Maroochydore 4558  
 38 Glenmore Road, Rockhampton 4700  
 U10 The Brickworks Warehouse Rd, Southport 4215  
 173 Ingham Road, Townsville 4810

Ph: 07 3277 1781  
 Ph: 07 3205 8922  
 Ph: 07 4151 6533  
 Ph: 07 4035 3088  
 Ph: 07 3252 5591  
 Ph: 07 4953 0734  
 Ph: 07 5479 1110  
 Ph: 07 4922 2841  
 Ph: 07 5591 6050  
 Ph: 07 4771 4131

**Darwin, NT**

F1/82 Winnellie Road, Winnellie 0820

Ph: 08 8984 4877

**South Australia**

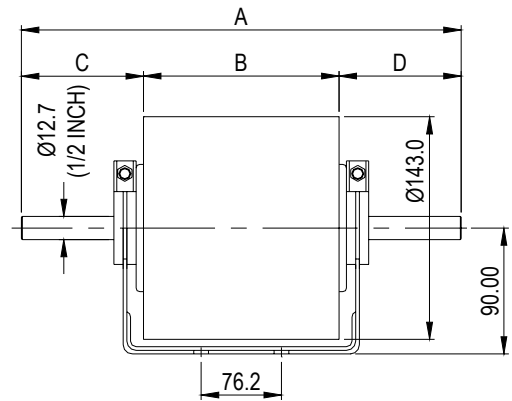
142 Richmond Road, Marleston 5033

Ph: 08 8234 1191

**Western Australia**

40 Abernethy Road, Belmont 6104  
 U2/7 Forsyth Street, O'Connor 6163  
 51 Frobisher Street, Osborne Park 6017

Ph: 08 9277 5922  
 Ph: 08 9331 1244  
 Ph: 08 9444 0088



### DIMENSIONAL DATA

PRODUCT CODE	DIMENSION			
	A	B	C	D
CT85-55008T-C02	458	94	182	182
CT85-55010V-C02	493	93	200	200
CT85-55013V-C02	450	94	178	178
CT85-55025V-C02	517	99	209	209
CT85-55031V-C02	555	111	222	222
CT85-55060V-C02	543	136	203	203
CT85-55075V-C02	610	136	237	237
CT85-57004T-C02	610	100	255	255
CT85-57020V-C02	520	112	204	204

**CONTACT YOUR NEAREST ACTROL BRANCH  
 FOR FURTHER INFORMATION**