

**CT85 SERIES  
 SINGLE SHAFT SCROLL FAN MOTORS**

**CT85 SERIES  
 SINGLE SHAFT SCROLL  
 FAN MOTORS**

**New Product Release**

**August 2004**



**FEATURES:**

- LOW NOISE
- DESIGNED TO INTERNATIONAL STANDARDS
- LONG BEARING LIFE
- INTERCHANGEABLE WITH OTHER BRANDS
- PERMANENT SPLIT CAPACITOR DESIGN
- RESILIENT MOUNT
- DYNAMICALLY BALANCED ROTORS
- AUTO RESET THERMAL OVERLOAD
- 3 SPEED TAPPED WINDING

**CT85 SERIES SINGLE SHAFT SCROLL FAN  
 MOTORS REPLACEMENT CHART**

CMG PRODUCT CODE	REPLACES FASCO	REPLACES KULTHORN
CT85-55031V-B02	8061S109-03 / 8061S109-07 / 808555NVA-A13	HF2J4701K
CT85-55060V-B02	8061S082-03 / 8061S082-17 / 8061S082-24	KHF2T4703
CT85-55075V-B02	8061S128-02 / 8061S128-06	

## SINGLE SHAFT - MOTOR SPECIFICATIONS

PRODUCT CODE	WATTS OUT	FULL LOAD AMPS	SPEED RPM	CAP SIZE UF/V	CAP SUPPLIED	STANDARD DIRECTION ROTATION	REVERSIBLE	VOLTAGE
CT85-55031V-B02	315	2.5	1350	4/440	YES	CW	NO	240
"	290	2.6	1337	2/440	NO	CW	NO	240
"	350	2.52	1360	6/440	NO	CW	NO	240
"	365	2.67	1366	8/440	NO	CW	NO	240
"	425	3.5	1300	10/440	NO	CW	NO	240
CT85-55060V-B02	600	4.4	1200	15/440	YES	CW	NO	240
CT85-55075V-B02	750	4.9	1360	20/440	YES	CW	NO	240

Note: Direction of Rotation is viewed from Shaft End

### ACTROL Sales Offices

#### Victoria

19 King Street, Blackburn 3130  
 38B Autumn Street, Geelong West 3218  
 U3 & U4/26-28 Roberna Street, Moorabbin 3189  
 7 Enterprise Court, Mulgrave 3170  
 2 Reserve Street, Preston 3072  
 U2/95 Drummond Road, Shepparton 3630  
 U4/88 Dynon Road, West Melbourne 3003  
 U2/410 Kiewa Street, Albury 2640

Ph: 03 9877 3487  
 Ph: 03 5223 1088  
 Ph: 03 9553 0422  
 Ph: 03 9560 3800  
 Ph: 03 9480 6355  
 Ph: 03 5831 3727  
 Ph: 03 9376 5222  
 Ph: 02 6021 5522

#### Tasmania

5 Wilmot Street, Launceston 7250

Ph: 03 6344 7088

#### New South Wales

49 St. Hilliers Road, Auburn 2144  
 U4/37 O'Riordan Street, Alexandria 2015  
 U6/80 Reserve Road, Artarmon 2064  
 81-83 Broadmeadow Road, Broadmeadow 2292  
 24 Cobborah Road, Dubbo 2830  
 U4/305 Manns Road, Gosford 2250  
 U5/12 Robertson Place, Penrith 2750  
 U2/28 Skinner Avenue, Riverwood 2210  
 U3/17-25 Lake Albert Road, Wagga Wagga 2650

Ph: 02 9649 3554  
 Ph: 02 9699 2644  
 Ph: 02 9906 6011  
 Ph: 02 4961 1441  
 Ph: 02 6882 4666  
 Ph: 02 4324 5768  
 Ph: 02 4721 1850  
 Ph: 02 9584 9111  
 Ph: 02 6921 9272

#### ACT

72 Kembla Street, Fyshwick 2609

Ph: 02 6280 4176

#### Queensland

32 Perrin Place, Salisbury 4107  
 U4/2 Kenworth Place, Brendale 4500  
 8 Electra Street, Bundaberg 4670  
 248 Hartley Street, Cairns 4870  
 43 Butterfield Street, Herston 4006  
 U1/11 Cemetery Road, Mackay 4740  
 81 Wisers Road, Maroochydore 4558  
 38 Glenmore Road, Rockhampton 4700  
 U10 The Brickworks Warehouse Rd, Southport 4215  
 173 Ingham Road, Townsville 4810

Ph: 07 3277 1781  
 Ph: 07 3205 8922  
 Ph: 07 4151 6533  
 Ph: 07 4035 3088  
 Ph: 07 3252 5591  
 Ph: 07 4953 0734  
 Ph: 07 5479 1110  
 Ph: 07 4922 2841  
 Ph: 07 5591 6050  
 Ph: 07 4771 4131

#### Darwin, NT

F1/82 Winnellie Road, Winnellie 0820

Ph: 08 8984 4877

#### South Australia

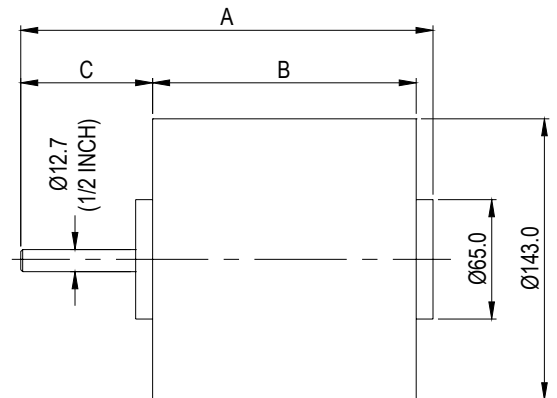
142 Richmond Road, Marleston 5033

Ph: 08 8234 1191

#### Western Australia

40 Abernethy Road, Belmont 6104  
 U2/7 Forsyth Street, O'Connor 6163  
 51 Frobisher Street, Osborne Park 6017

Ph: 08 9277 5922  
 Ph: 08 9331 1244  
 Ph: 08 9444 0088



### DIMENSIONAL DATA

PRODUCT CODE	DIMENSION		
	A	B	C
CT85-55031V-B02	236	119	101
CT85-55060V-B02	260	144	101
CT85-55075V-B02	260	144	101

**CONTACT YOUR NEAREST ACTROL BRANCH  
FOR FURTHER INFORMATION**