



ACTROL PARTS, A DIVISION OF GSA INDUSTRIES (AUST.) PTY. LTD.
A.C.N. 004 784 301 A.B.N. 71 004 784 301
WEBSITE: www.actrol.com.au

Easyboard

you're in control



Control board series

for maximum protection
of a refrigeration plant

Wouldn't you like to be in Control?

The Actrol Easyboard series packages together Carel and Alstom technology to deliver a range of switchboards which offer maximum protection and control of refrigeration and air conditioning plants.

Easyboard reduces installation time and reliance on electrical contractors and all boards are pre-wired for hassle free installation. Furthermore Easyboard comes with a 12 month warranty.

Medium and Low temperature boards are designed for smaller applications using 3 phase units up to a duty of 16 FLA.

Both boards are pre-wired and include a wiring diagram.

Selection and fittings of the desired overload protection is easy due to extra cable length on the control wire for the contactor.

The low temperature board has an extra pre-wired contactor for defrost elements, circuit breaker and evaporator fan relay.

Overload sold separately.



With Actrol Easyboard you are.

pCO² Control Board comes in three sizes: Small, Medium and Large. The controllers are pre-wired through a series of relays to a terminal strip ready for interconnection to contactors and sensors.

pCO² Small: 5 analogue inputs, 4 analogue outputs, 8 digital inputs and 8 digital outputs.

pCO² Medium: 8 analogue inputs, 4 analogue outputs, 14 digital inputs, 13 digital outputs.

pCO² Large: 10 analogue inputs, 6 analogue outputs, 18 digital inputs, 18 digital outputs.

Application specific software is optional.



pCO² Rack Control Boards are available in two sizes: small and large.

Rack controllers are designed for multiple evaporator and capacity control with condenser fan control and duty rotation.

Rack control boards also come with pre-loaded software.

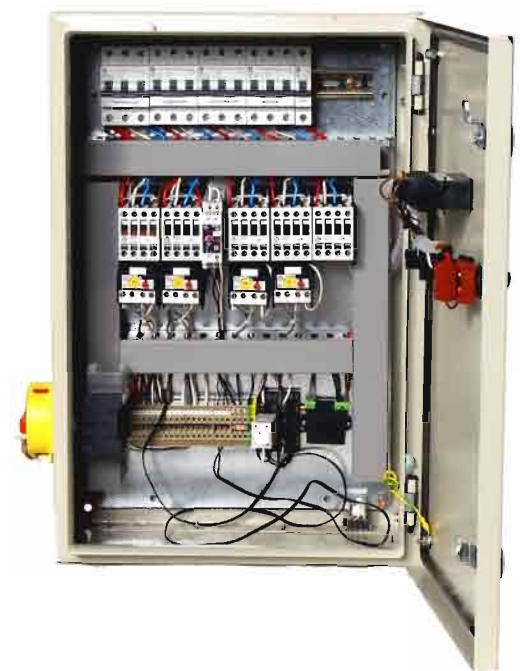
Can we build you one?

The Custom Easyboard is a tailor made board designed for your requirements. We can build it to suit D.O.L., Star Delta or Part Winding Start.

The Custom Easyboard enables Carel controllers to be fitted and pre-wired, either panel or din-rail mount.

Other options available include phase failure protection, run lights, fault lights and on/off switches.

All boards have an IP65 rating.



Easyboard

you're in control



Cat No.	Part No.	Description	Features	Applications
324600	EBMT	Easyboard Medium temp	Control & Power Circuit breakers, Contactor, Wiring Diagram, Terminal strip and all pre-wired.	Medium temp applications up to a duty of 16 FLA
324604	EBLT	Easyboard Low temp	Control & Power Circuit breakers, Contactor, Wiring Diagram, Terminal strip and all pre-wired. An extra contactor for heating elements and a relay for evaporator fans.	Low temp applications up to a duty of 16 FLA
324608	EBPL	Easyboard PCO2 large	Control Board fitted with Carel pCO ² Controller Large. Pre-wired with terminal strips, Relays & Transformers.	Suitable for chiller control, milk vats, air handling units, freezer rooms and cool rooms. Specific software is available.
324610	EBPM	Easyboard PCO2 medium	Control Board fitted with Carel pCO ² Controller Medium. Pre-wired with terminal strips, Relays & Transformers.	
324612	EBPS	Easyboard PCO2 small	Control Board fitted with Carel pCO ² Controller Small. Pre-wired with terminal strips, Relays & Transformers.	
324614	EBPRS	Easyboard Rack control small	Control Board fitted with Carel pCO ² Rack Controller Small. Pre-wired with terminal strips, Relays & Transformers.	
324616	EBPRL	Easyboard Rack control large	Control Board fitted with Carel pCO ² Rack Controller Large. Pre-wired with terminal strips, Relays & Transformers	Multiple evaporator and capacity control with condenser fan control and duty rotation.

Actrol Parts Branch Directory

Victoria:

Albury: 02 6021 5522
 Blackburn: 03 9877 2055
 Geelong: 03 5223 1088
 Launceston: 03 6344 7088
 Moorabbin: 03 9553 0422
 Mulgrave: 03 9560 3800
 Preston: 03 9480 6355
 Shepparton: 03 5831 3727
 West Melbourne: 03 9376 5222

New South Wales:

Albury: 02 6021 5522
 Alexandria: 02 9699 2644
 Auburn: 02 9749 8383
 Artarmon: 02 9906 6011
 Broadmeadow: 02 4961 1441
 Dubbo: 02 6882 4666
 Fyshwick: 02 6280 4176
 Gosford: 02 4324 5768
 Penrith: 02 4721 1850
 Wagga Wagga: 02 6921 9272

Queensland:

Brendale: 07 3205 8922
 Bundaberg: 07 4151 6533
 Cairns: 07 4035 3088
 Herston: 07 3252 5591
 Mackay: 07 4953 0734
 Maroochydore: 07 5479 1110
 Rockhampton: 07 4922 2841
 Salisbury: 07 3875 0400
 Southport: 07 5591 6050
 Townsville: 07 4771 4131

Western Australia:

Belmont: 08 9277 5922
 O'Connor: 08 9331 1244
 Osborne Park: 08 9444 0088

South Australia:

Marleston: 08 8234 1191

Northern Territory:

Winnellie: 08 8984 4877