



Midea Ducted and Cassette Split Systems provide year round comfort, all around the house



Midea sells more than 30 million air conditioning units a year, in over 150 countries around the world. The company has over 40,000 employees producing state-of-the-art inverter and fixed speed split systems, window, portable, ducted, multi-head and a comprehensive range of commercial systems, including VRF products.

Midea has its headquarters in Guangdong Province China, which covers over one million square metres (pictured above). The company maintains over 85 testing centres, employs over 1,000 engineers and manufactures over 1,000 different products.

Distributed by

CASTEL www.castel.com.au

48A Radford Road, Reservoir, Vic. 3073. Tel: (03) 9495 2899

Don't risk your warranty! Make sure your installer is qualified and licensed.



30 million units a year sold worldwide – that should make you feel comfortable.



Year round comfort, all around the house

A Midea ducted inverter system puts total climate control right at your fingertips. When you've worked hard making your home as attractive and comfortable as possible, it's the perfect solution in every respect. Multi-room, year-round comfort is delivered through discreetly designed and positioned air vents supplied by your specialist air conditioning dealer. Your dealer will also design all the ductwork in your ceiling to provide the best mix of air distribution and quietness. And your Midea outdoor unit delivers the precise amount of cooling or heating required to maintain your living space just the way you like it.

In ceiling cassettes are another alternative for home, shops and offices using stylish ceiling mounted panels to distribute heating or cooling evenly over larger spaces.

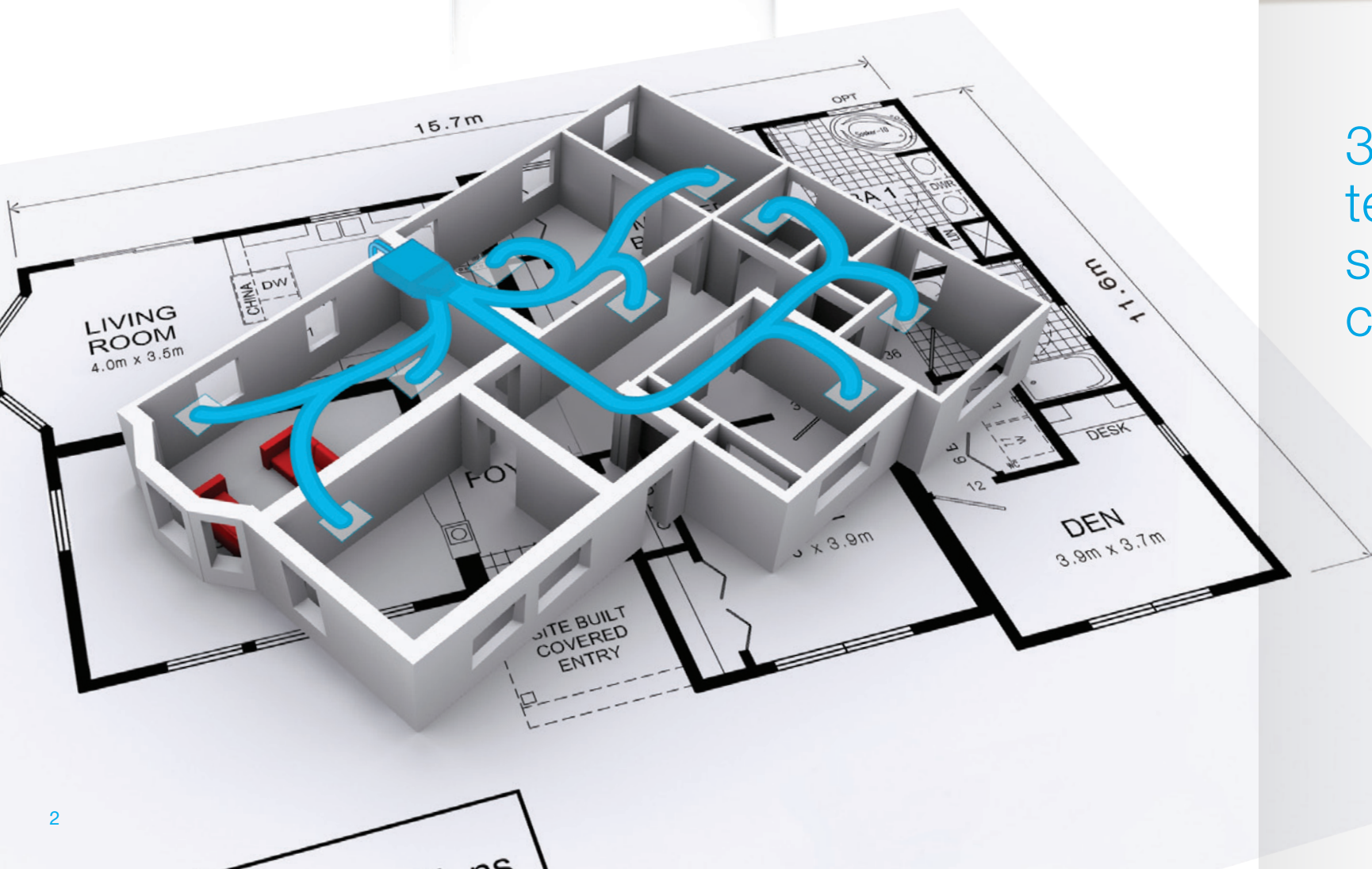


Total comfort at your fingertips

Your wired wall mounted control panel lets you adjust the features of your Midea ducted unit to suit your own needs.

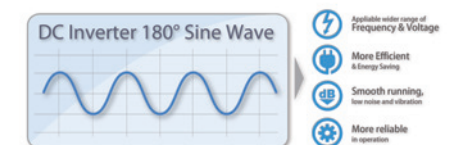
ON/OFF, temperature setting, timer functions and fan speed settings are just some of the functions accessible.

You can even lock the panel to keep little fingers from making unwanted adjustments.



3D DC Inverter technology saves energy, cuts costs.

- ▶ The compressor and both indoor and outdoor fan motors are Brushless DC type to reduce noise and increase energy efficiency.
- ▶ Power output adjusts automatically to maintain precise temperature control. When reaching the desired SET temperature the compressor speed is adjusted to minimise power usage.
- ▶ Utilising 180° Sine wave technology in their compressors allows Midea greater efficiency, less vibration and noise, and greater reliability over common 120° sawtooth compressors.

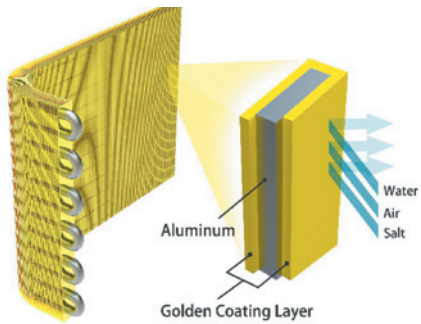


Ducted Systems

Rotary DC Compressor technology

Midea uses only premium brand rotary or scroll compressors in its single phase split ducted models.

Gold Fin Anti-Corrosive Coating



This corrosion resistant material on the condenser fins enhances and prolongs the heat exchange capacity of the outdoor unit, extending the working life of your air conditioner.

Anti-Rust Condenser Casings

Gives your outdoor unit the best possible chance of withstanding the worst that nature can serve up. When designing the condenser casings, Midea subjected the units to 1,000 hours of salt water spray testing.

Service Valve Cover

Protects the outdoor unit service valves from accidental impact as well as capturing any water condensation on the valves.

Built-In Electronic Diagnostics

In the unlikely event of a service issue, built-in electronic diagnostics provide precise error code information so your unit can be repaired in the shortest possible time.

Pre-Charged

Units are pre-charged for a generous 20 metre pipe run to reduce installation costs.

Operating Range

With a generous operating range of -15° to 50° Celsius, you can be confident your Midea system will be performing when you need it most.

Optimised Outdoor Fan Design

Midea continues their traditional attention to the design of the outdoor fans. Airflow and performance has been optimised while many units are quieter again than previous models.

Warranty

A further measure of comfort is provided by our 5 year warranty.

For Commercial Users

The new MHG series ducted have outside air interlock, remote ON/OFF and alarm state terminal connections on PC Board.

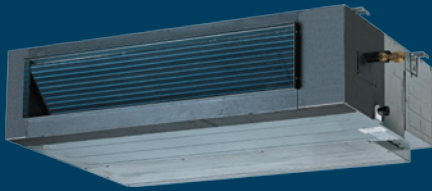
Single Phase Ducted Specifications

Indoor Unit			MHG-24HWFN1-Q		MHG-36HWFN1-Q		MHG-48HWFN1-Q		MHG-60HWFN1-Q	
Outdoor Unit			MOU-24HFN1-Q		MOU-36HFN1-Q		MOU-48HFN1-Q		MOU-60HFN1-Q	
Power Supply		V-Ph-Hz	220~240-1-50		220~240-1-50		220~240-1-50		220~240-1-50	
Function			Cooling	Heating	Cooling	Heating	Cooling	Heating	Cooling	Heating
Rated Capacity		kW	7.35	8.50	10.40	11.20	13.50	16.00	16.80	17.70
Capacity Range		kW	3.40~8.66	4.40~10.20	5.30~12.00	5.70~14.00	6.88~15.50	8.15~19.50	8.50~19.00	9.00~22.00
Rated Input		W	2220(780~3230)	2250(900~3330)	3250(1400~4280)	3150(1350~4150)	4220(1820~5560)	4500(1950~5900)	5300(2300~7000)	5200(2200~6900)
Rated Current		A	9.8(3.4~14.1)	10.0(3.9~14.5)	14.4(6.2~19.0)	14.0(6.0~18.5)	18.7(8.0~25.0)	20.0(8.5~26.0)	24.3(10.5~31.0)	23.8(10.0~31.0)
EER/COP		W/W	3.31	3.78	3.20	3.56	3.20	3.56	3.17	3.40
AEER/ACOP		W/W	3.27	3.73	3.16	3.50	3.17	3.52	3.15	3.38
Star Rating Index (SRI)			2	3	1.5	2.5	1.5	2.5	1.5	2.5
Max Input Consumption		W	4050		4800		5600		6000	
Max Input Current		A	18.5		22.0		28.0		30.0	
Moisture Removal		L/hr	1.5		2.7		3.2		3.8	
Compressor		Type	Rotary		Rotary		Rotary		Scroll	
Indoor Air Flow (Hi/Mid/Lo)		L/sec	402/333/277		888/763/638		916/791/652		1027/888/819	
Indoor External Static Pressure (Max)		Pa	110		200		200		200	
Indoor Noise Level (Hi/ Mid/ Lo @ 1.5m below fan coil)		dB(A)	42/38/33		49/45/42		49/45/42		49/46/42	
Outdoor Noise Sound Pressure (Hi @ 1m)		dB(A)	59		62		62		63	
Outdoor Noise Sound Power (Hi @ 1m)		dB(A)	68		71		71		72	
Indoor Unit (Width is Nett of Hanger Attachment & Control Box)	Dimension (WxDxH)	mm	1110x450x270		1200x550x380		1200x550x380		1400x770x440	
	Packing (WxDxH)	mm	1325x535x300		1475x655x420		1475x655x420		1605x910x485	
	Net/Gross Weight	kg	28.5/33		51/58		54/60		75/83	
Flange Size	Supply Air	mm	1054x185		1000x253		1000x253		1188x385	
	Return Air	mm	1061x226		1145x334		1145x334		1188x385	
Outdoor Unit (Add 80mm to Width for Service Valve Clearance)	Dimension (WxDxH)	mm	900x315x860		990x340x965		938x392x1369		938x392x1369	
	Packing (WxDxH)	mm	1043x395x915		1120x435x1100		1095x495x1505		1095x495x1505	
	Net/ Gross weight	kg	62/65		70/83		100/114		122/135	
Refrigerant Type/ Quantity		g	R410A/2900		R410A/3200		R410A/5050		R410A/6050	
Pre-charged to		m	20		20		20		20	
Refrigerant Piping	Liquid Side/ Gas Side	mm (")	9.52/15.9(3/8"/5/8")		9.52/15.9(3/8"/5/8")		9.52/19(3/8"/3/4")		9.52/19(3/8"/3/4")	
	Max. Pipe Length	m	50		65		65		65	
	Max. Difference in Level	m	25		30		30		30	
Operation Temperature Range (indoor)		°C	17~30		17~30		17~30		17~30	
Ambient Temperature Range Cooling/Heating		°C	-15~50/-15~24		-15~50/-15~24		-15~50/-15~24		-15~50/-15~24	

Specifications based on Testing conditions as specified in AS/NZ3823 1.1.1998. Cooling: Indoor DB 27°C WB 19°C, Outdoor DB 35°C WB 24°C. Heating: Indoor DB 20°C, Outdoor DB 7°C. Star Rating, Comparative Energy Consumption (CEC) and Minimum Energy Performance Standards (MEPS) conform to AS/NZS 3823.1.2:2012. Running current is at rated conditions and does not include compressor start-up or variations in power supply or load requirements. Noise levels are measured in a semi - anechoic chamber. Output capacities are reduced once ambient temperatures are >35°C or <7°C Design & Specifications are subject to change for product improvement. E&O E



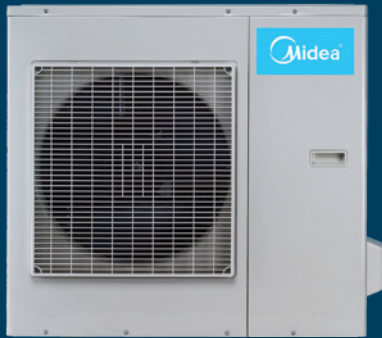
MHG-48HWFN1-Q



MHG-24HWFN1-Q



MOU-48HFN1-Q



MOU-24HFN1-Q

Cassette Type Split Systems



Cassettes are ideal for large open spaces in both domestic and commercial applications or where roof space is limited.

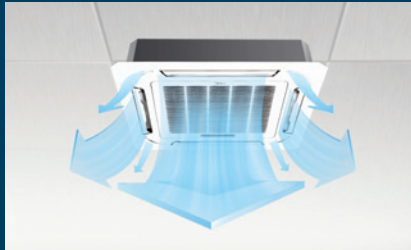
Single Phase Cassette Specifications

Indoor Unit		MCD-24HRFN1-QRC8		MCD-42HRFN1-Q		MCD-46HRFN1-Q	
Outdoor Unit		MOU-24HFN1-QRC8		MOU-42HFN1-Q		MOU-46HFN1-Q	
Power Supply	V-Ph-Hz	220~240-1-50		220~240-1-50		220~240-1-50	
Function		Cooling	Heating	Cooling	Heating	Cooling	Heating
Rated Capacity	kW	7.10	7.60	11.00	13.00	12.80	14.00
Capacity Range	kW	3.6~7.8	3.8~8.3	5.8~12.0	6.5~14.5	6.5~14.0	7.0~15.5
Rated Input	W	2150(1030-2790)	2180(1000-2900)	3450(1660-4440)	4080(1860-5370)	4050(1880-5200)	4400(2060-5740)
Rated Current	A	9.8(4.7-12.7)	10.0(4.6-13.5)	15.79(7.6-20.3)	18.67(8.5-24.6)	18.54(8.6-23.8)	20.14(9.4-26.3)
EER/COP	W/W	3.30	3.49	3.19	3.19	3.16	3.18
AEER/ACOP	W/W	3.25	3.42	3.16	3.16	3.13	3.15
Star Rating Index (SRI)		2	2	1.5	1.5	1.5	1.5
Max Input Consumption	W	2900		5600		6000	
Max Input Current	A	13		28.0		30.0	
Moisture Removal	L/hr	1.5		3		4	
Compressor	Type	Rotary		Rotary		Scroll	
Indoor Air Flow (Hi/Mid/Lo)	L/Sec	438/333/277		638/555/500		638/555/500	
Indoor Noise Level (Hi/Mid/Lo @ 1.5m below fan coil)	dB(A)	49/45/41		53/49/45		54/51/48	
Outdoor Noise Sound Pressure Level (Hi @ 1m)	dB(A)	58		62		62	
Outdoor Noise Sound Power (Hi @ 1m)	dB(A)	69		71		71	
Indoor Unit	Dimension (WxDxH)	mm	840x840x245	840x840x245	840x840x245	840x840x287	
	Packing (WxDxH)	mm	900x900x265	900x900x265	900x900x265	900x900x320	
	Net/Gross weight	kg	24/28	25/28.5	25/28.5	31/34	
Panel	Dimension (WxDxH)	mm	950x950x55	950x950x55	950x950x55	950x950x55	
	Packing (WxDxH)	mm	1035x1035x90	1035x1035x90	1035x1035x90	1035x1035x90	
	Net/Gross weight	kg	5/8	5/8	5/8	6.5/8	
Outdoor Unit (Add 80mm to Width for Service Valve Clearance)	Dimension (WxDxH)	mm	895x313x862	938x392x1369	938x392x1369	938x392x1369	
	Packing (WxDxH)	mm	1043x395x915	1095x495x1420	1095x495x1420	1095x495x1420	
	Net/ Gross weight	kg	59/63	100/114	100/114	116/130	
Refrigerant	Type/g	R410A/2650g		R410A/5050g		R410A/5650g	
Pre-charged to	m	20		20		20	
Refrigerant Piping	Liquid Side/Gas Side	mm (")	9.52/15.9 (3/8"/5/8")	9.52/19 (3/8"/3/4")	9.52/19 (3/8"/3/4")	9.52/19 (3/8"/3/4")	
	Max Pipe length	m	50	65	65	65	
	Max Difference in Levels	m	25	30	30	30	
Operation temperature range (indoor)	°C	17~30		17~30		17~30	
Ambient Temperature Range (cooling/heating)	°C	-15~50 / -15~24		-15~50 / -15~24		-15~50 / -15~24	

Specifications based on Testing conditions as specified in AS/NZ3823 1.1:1998. Cooling: Indoor DB 27°C WB 19°C, Outdoor DB 35°C WB 24°C. Heating: Indoor DB 20°C, Outdoor DB 7°C. Star Rating, Comparative Energy Consumption (CEC) and Minimum Energy Performance Standards (MEPS) conform to AS/NZS 3823.1.2:2012. Running current is at rated conditions and does not include compressor start-up or variations in power supply or load requirements. Noise levels are measured in a semi - anechoic chamber. Output capacities are reduced once ambient temperatures are >35°C or <7°C. Design & Specifications are subject to change for product improvement and E&O excepted.

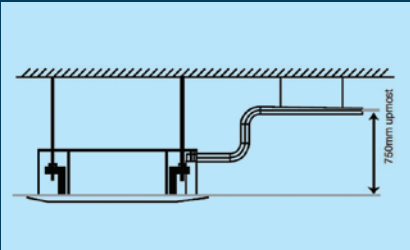
Compact Machine Body

For easier installation and maintenance, the body height has been reduced from previous models. (7.1kW to 11.0kW models are now only 245mm high.)



Built-in Water Pump

The drain pump can lift condensing water up to 750mm.



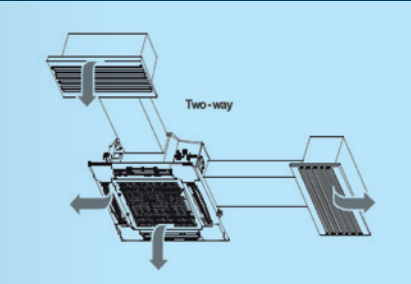
A Breath of Fresh Air

Indoor air quality can be further enhanced by adding fresh air intakes.



Room for Expansion

Reserved spaces for air side-outlet to connect ductwork to another nearby room.



Controllers

Wired controllers are available for use in both commercial and domestic situations. Wireless controllers are also available.



For Commercial Users

The new MCD series cassettes have outside air interlock, remote ON/OFF and alarm state terminal connections on PC Board.

Five Year Warranty