



**BIG FOOT  
SYSTEMS**

# Frameworks

## Typical Application

For supporting roof plant on a flat roof.

## Framework

Three modular frameworks are available in 1m, 2m & 3m versions.  
Three foot sizes available, 305, 450 & 600mm, supplied with AV mats.  
Leg assemblies adjustable by M24 nuts.  
All metal parts galvanised.

**Custom systems can be designed on request**

### Dimensions

Main framework in 3 sizes:  
40 x 40 x 2.5mm thick steel tube  
50 x 50 x 3.0mm thick steel tube  
100 x 50 x 3.0mm thick steel tube

### Height Adjustment

Standard framework height adjustable from 255 – 360mm floor to framework.  
Stepped roof framework height adjustable from 255 – 560mm floor to framework.

### Safety Standards

Supplied to EN10219 S235 J0H, EN10219 S275 J2H & EN10219 S355 J2H  
Lock Nuts are M24, type C form Din 936 Washers to BS 4320-B  
Large M24 Nut & Studding manufactured from Mild Steel Grade EN1A (Leaded)

## Working Conditions

Suitable for applications in temperatures between -30°C to +80°C.  
U.V. Stabilized.



## Loading

305mm LEG ASSEMBLY													Max. load (Kg)
Load (Kg)	10	20	30	40	50	60	70	80	90	100	110	120	120
Load per Foot (kN/m <sup>2</sup> )	1.0	2.1	3.2	4.2	5.3	6.4	7.5	8.6	9.6	10.8	11.8	12.9	

450mm LEG ASSEMBLY													Max. load (Kg)
Load (Kg)	20	40	60	80	100	120	140	160	180	200	220	240	240
Load per Foot (kN/m <sup>2</sup> )	1.0	2.0	3.0	4.0	5.0	6.0	7.0	8.0	9.0	10.0	11.0	12.0	

600mm LEG ASSEMBLY												Max. load (Kg)
Load (Kg)	20	40	60	80	100	150	200	250	300	350	400	400
Load per Foot (kN/m²)	0.5	1.1	1.6	2.2	2.7	4.1	5.5	6.8	8.2	9.5	10.9	

## Plastic Foot

Material – Nylon 6 B601L 30% Glass Fibre Filled

Property	Test Method ASTM	Test Method ISO Equiv	Units	Value 30%
<b>Physical</b> Specific gravity Water Absorbtion Mould Shrinkage (flow)	D792 D570	ISO 1183 ISO 62 ISO 2577	Kg/m <sup>3</sup> % %	1.36 1.1 0.35
<b>Mechanical</b> Tensile Strength Elongation at break Flexural Strength Flexural modulus Notched Charpy Impact Unnotched Charpy Impact	D638 D638 D790 D790	ISO 527 ISO 527 ISO 178 ISO 178 ISO 179/1eA ISO 179/1eU	MPa % MPa Gpa kJ/m <sup>2</sup> kJ/m <sup>2</sup>	130 4 190 5900 45
<b>Thermal</b> Melting Point Vicat Softening Point Deflection Temperature	D789 D648	ISO 3146 ISO 12188 ISO 75	°C °C °C A 1.85 Mpa A 0.46 Mpa	220   210 220
<b>Flammability</b> UL94 m/m		ISO 75		V2

All data generated from specimens moulded in natural material, stored in a dry atmosphere (no more than 0.2% moisture). The inclusion of colour pigments or other additives may change some of the test results All technical information supplied is accurate and reliable to the best of our knowledge. The information is given without warranty or guarantee and is intended for initial guidance or comparative purposes.

## Anti Vibration Mat

### Quality Assurance

Raw materials are selected from ISO9002 registered suppliers

### Construction

Pressure moulded using a one or two part mix, utilising milled, sieved & graded Styrene Butadiene Rubber (SBR-Recycled Rubber). Bound using a ratio of high quality moisture curing Polyurethane Pre-Polymer. Manufactured with a built in shrinkage allowance.

### Safety Standards

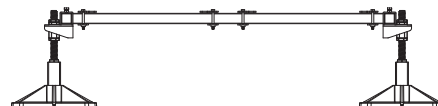
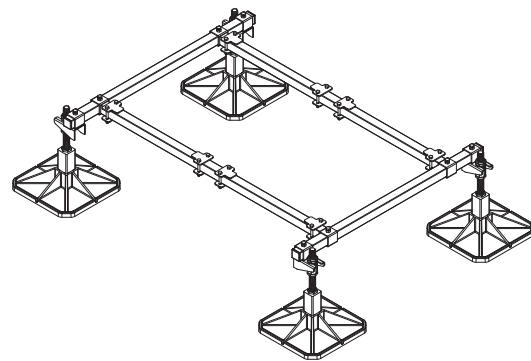
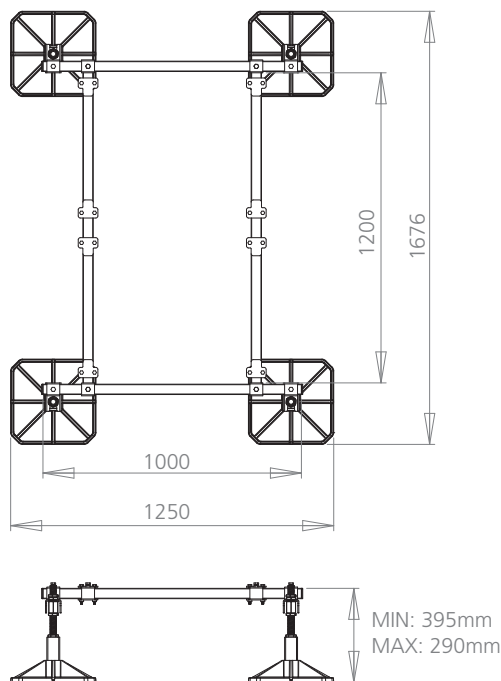
All parts of British Standard BS7188:1989 & BS5696 Part 3:1979

European Standard PR EN 1177

U.S.A. Standard ASTM F 1292-99

Big Foot Systems takes no responsibility for the condition of the roof on which our equipment is to be used. You must ensure that the substrate on which the Big Foot is intended for use is structurally sound enough to take the weight and point loadings we have indicated. All Big Foot products must be installed in line with the guarantees and recommendations of the manufacturer of the roofing system. The manufacturer of PVC membranes should advise on the susceptibility migration of plasticizers and specific recommendations should be adhered to so that the roof guarantee is not affected.

## B6075 - 1m Framework

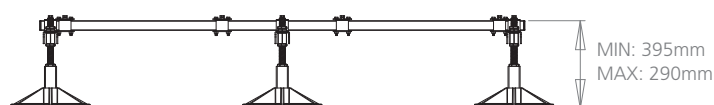
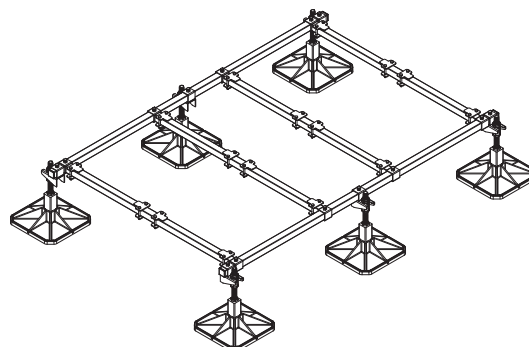
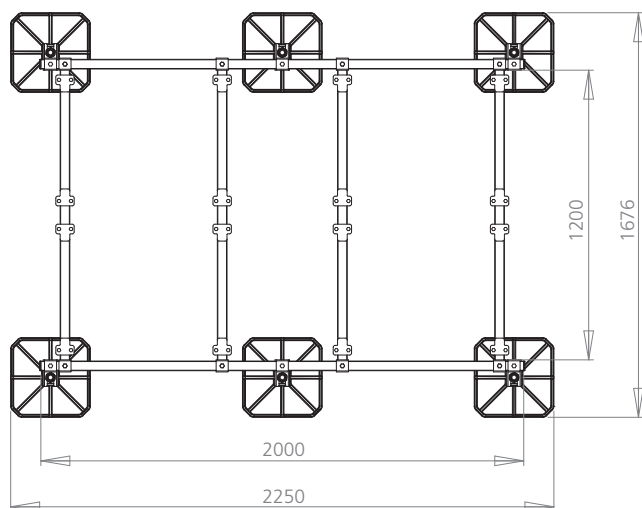


### OFF-THE-SHELF 2 UNIT SYSTEM

- FEET SHOWN IN STANDARD POSITION, ON OUTSIDE OF PLAIN BARS
- CLAMPS AND CROSSBARS SHOWN ASSEMBLED CORRECTLY AND IN APPROX. POSITION
- SYSTEM COMES WITH 305mm BIG FOOT AND 305mm AV MATS (450mm & 600mm AVAILABLE)

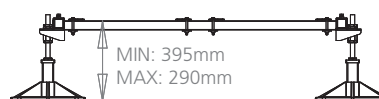
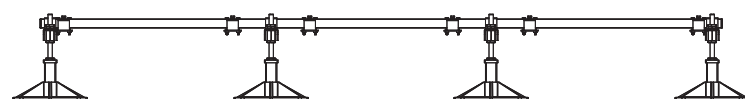
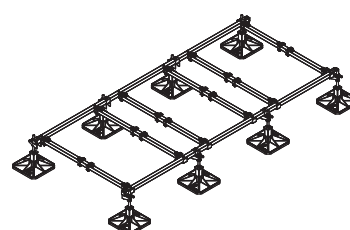
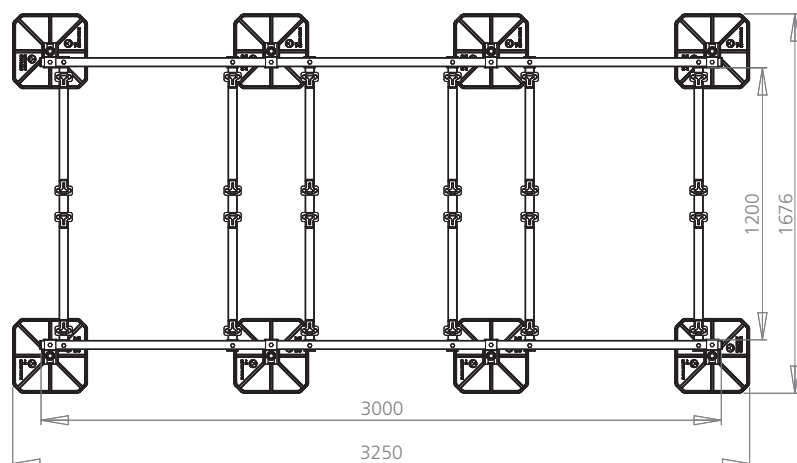
RANGE OF PLAIN BARS, CROSS BARS & OTHER COMPONENTS AVAILABLE TO CREATE CUSTOM BIG FOOT SYSTEMS

## B6077 - 2m Framework



**OFF-THE-SHELF 4 UNIT SYSTEM**

## B6078 - 3m Framework



**OFF-THE-SHELF 6 UNIT SYSTEM**

- FEET SHOWN IN STANDARD POSITION, ON OUTSIDE OF PLAIN BARS
- CLAMPS AND CROSSBARS SHOWN ASSEMBLED CORRECTLY AND IN APPROX. POSITION
- SYSTEM COMES WITH 305mm BIG FOOT AND 305mm AV MATS (450mm & 600mm AVAILABLE)

RANGE OF PLAIN BARS, CROSS BARS & OTHER COMPONENTS AVAILABLE TO CREATE CUSTOM BIG FOOT SYSTEMS