



THE HEART OF FRESHNESS

# PRESSURE VESSELS

LIQUID RECEIVERS

MANUFACTURED TO – AS 1210  
RE-DESIGNED FOR HFC REFRIGERANTS  
LARGER VALVE CONNECTIONS FITTED AS STANDARD  
RUST RESISTANT PAINT TREATMENT

LIQUID RECEIVERS



## REFRIGERANT RECEIVERS

### Characteristics

Bitzer Refrigerant Receivers are designed to accommodate a wide range of applications.

- ❑ All Receivers are manufactured to Australian Standard AS-1210
- ❑ Our standard range includes both Vertical & Horizontal designs.
- ❑ Valve connections and liquid pick-up tubes have been specifically re-designed to suit HFC Refrigerants as standard.
- ❑ Multiple positions for liquid level alarm connection

For specific system designs, special receiver vessels can be manufactured on request.

### Technical Data

Bitzer Refrigerant Receivers are supplied c/w –

- Rota lock sight glasses c/w level indicator
  - Vertical vessels - 3 s/glasses
  - Horizontal vessels - 2 s/glasses
- 1/2" BSP socket for relief valve
- 1/2" NPT socket for liquid level alarm
  - 2 socket positions
- 3/4" NPT socket for vertical liquid level monitoring (Hansen probe)

RV 107 - RV 287 supplied with 1 3/8" Rota lock valves (1 5/8" valves on request)

RV 377 - RV 598 supplied with 1 5/8" Full port flanged service valves

Note – 2 1/8" and 2 5/8" flanged valves available on request (P.O.A)

### Vertical Receivers

Part #	Model	*Pump down capacity(Kg)		A Approximate Height	B	C Ø Nominal Diameter	D Valve Size	E BSP Relief	F Ø NPT Alarm	G Circle Diameter.	H Ø Hole dia.
		R22	R404A								
<b>B31-001</b>	RV 107	51	45	1131	900	273	1-3/8"	1/2"	1/2"	280	16
<b>B31-003</b>	RV 162	73	64	1141	900	324	1-3/8"	1/2"	1/2"	280	16
<b>B31-004</b>	RV 221	90	79	1190	900	356	1-3/8"	1/2"	1/2"	333	16
<b>B31-006</b>	RV 287	115	102	1496	1200	356	1-3/8"	1/2"	1/2"	333	16
<b>B31-008</b>	RV 377	153	135	1478	1200	406	*1-5/8"	1/2"	1/2"	384	16
<b>B31-010</b>	RV 491	196	173	1555	1200	457	*1-5/8"	1/2"	1/2"	415	16
<b>B31-011</b>	RV 598	240	212	1855	1500	457	*1-5/8"	1/2"	1/2"	415	16

\* 1-5/8" Full port flanged valves fitted

\* Pump down capacity calculated @ 80% full and @ 25°C

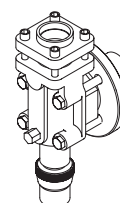
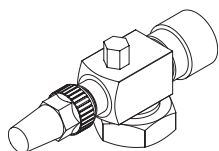
### Horizontal Receivers

Part #	Model	*Pump down capacity(Kg)		A Approximate Length	B	C Ø Nominal Diameter	D Valve Size	E BSP Relief	F Ø NPT Alarm	G Mounting Centers.	G1 Mounting Centers
		R22	R404A								
<b>B30-012</b>	RH 107	51	45	1070	900	273	1-3/8"	1/2"	1/2"	450	280
<b>B30-014</b>	RH 162	73	64	1094	900	324	1-3/8"	1/2"	1/2"	450	330
<b>B30-015</b>	RH 221	90	79	1141	900	356	1-3/8"	1/2"	1/2"	450	360
<b>B30-016</b>	RH 287	115	102	1457	1200	356	1-3/8"	1/2"	1/2"	680	360
<b>B30-017</b>	RH 377	153	135	1440	1200	406	*1-5/8"	1/2"	1/2"	680	410
<b>B30-018</b>	RH 491	196	173	1494	1200	457	*1-5/8"	1/2"	1/2"	680	460
<b>B30-019</b>	RH 598	240	212	1794	1500	457	*1-5/8"	1/2"	1/2"	750	460

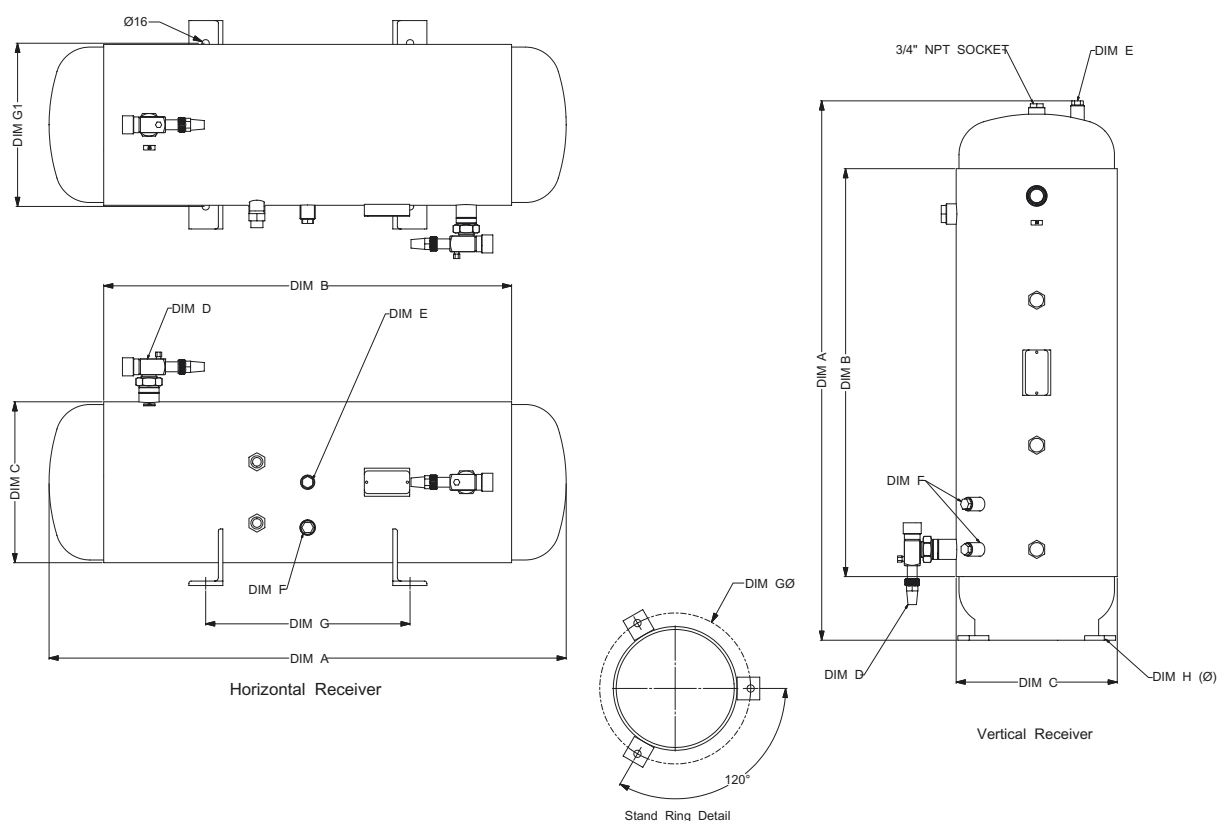
\* 1-5/8" Full port flanged valves fitted

\* Pump down capacity calculated @ 80% full and @ 25°C

**Note** – Rota lock valves generally have smaller port sizes than the pipe connections fitted to the valve.  
Capacities above 120kW in condenser drain lines and 150kW in liquid lines may experience restricted flow from the condenser and liquid flashing in the liquid line.  
In these cases larger port valves (Full port flanged valves) would be Recommended.



## DIMENSIONAL DRAWINGS



### Small Vertical Receivers

Part #	Model	*Pump down capacity(Kg)		A Approximate Height	B	C Ø Nominal Diameter	D Valve Size	E BSP Relief	F Ø NPT Alarm	G Circle Diameter	H Ø Hole dia.
		R22	R404A								
<b>B31-005</b>	RV 25	13	11.5	802	650	168	3/4"	3/8"	NA	174	16
<b>B31-014</b>	RV 73	28	25	1005	800	220	3/4"	3/8"	NA	228	16
<b>B31-017</b>	RV 80	42	37	1055	1200	220	1-1/8"	3/8"	NA	416	16

\*Pump down capacity calculated @ 80% full and @ 25° C

\*\* Please nominate mounting arrangement at time of order

### Small Horizontal Receivers

Part #	Model	*Pump down capacity(Kg)		A Approximate Length	B	C Ø Nominal Diameter	D Valve Size	E BSP Relief	F Ø NPT Alarm	G Mounting Centers.
		R22	R404A							
<b>B30-005</b>	RH 3	3	2.7	533	445	101	3/8"	3/8"	NA	**
<b>B30-003</b>	RH 25	13	11.5	760	650	168	3/4"	3/8"	NA	**
<b>B30-008</b>	RH 73	28	25	962	800	220	3/4"	3/8"	NA	**
<b>B30-027</b>	RH 80	42	37	1362	1200	220	1-1/8"	3/8"	NA	**
<b>B30-010</b>	RH 90	52	46	1542	1380	220	1-1/8"	3/8"	NA	**

\*Pump down capacity calculated @ 80% full and @ 25° C

\*\* Please nominate mounting arrangement at time of order

#### **BITZER Australia Pty Limited**

134 Dunheved Circuit,  
St Marys, NSW 2760

Australia

tel +61 (2) 8801 9300

fax +61 (2) 9673 4698

info@bitzer.com.au

#### **Victoria**

tel +61 (3) 8326 8200

fax +61 (3) 9310 2520

#### **Queensland**

tel +61 (7) 3725 1360

fax +61 (7) 3274 3621

#### **North Queensland**

tel +61 (7) 4728 3964

fax +61 (7) 4755 2910

#### **South Australia**

tel +61 (8) 8345 6110

fax +61 (8) 8268 4555

#### **Western Australia**

tel +61 (8) 6350 6297

fax +61 (8) 9359 2077

#### **BITZER New Zealand**

#### **BITZER Australia Pty Ltd**

13b Airborne Rd

Albany 0632

North Shore City

New Zealand

tel +64 9 415 2030

fax +64 9 415 2031

[www.bitzeravp.com.au](http://www.bitzeravp.com.au)

[www.buffalotrident.com.au](http://www.buffalotrident.com.au)

## **Other Products Available**



#### **VB Hydro-Boost Condenser**

4, 6, 8, 10 Fan Models

Epoxy Coated Fins

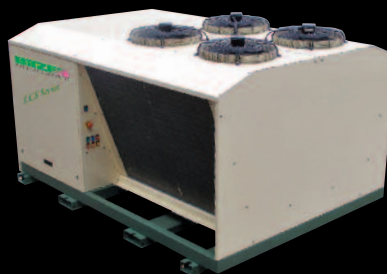
High Quality Axial Fans

Pre-Cooler Pad System

Easy Access Pre-Cooler Pads

Stainless Steel Pumps

Optional ECCI Controller



#### **LCS Outdoor Condensing Unit**

Packaged solutions for larger projects

Capacity range up to 95 kW @ -5°C SST R404A

One, two or three parallel compressor combinations

Full Electrical included, optional Fan Speed Control



#### **Hyper Pac Screw Packages**

Multiple Screw Compressor Systems

Flexible Application Range

High Efficiency Economizer Operation

Large Volume Suction Accumulator / Heater

In the interest of continuous improvement BITZER reserves the right to change the specifications or design of any of its products without notice. The BITZER Symbol, name BITZER Group of Companies and model names are registered trade marks. All products manufactured are pending design and specification registration and must not be copied or duplicated in any way.

**ISSUE: OCTOBER 2011**