



# Line Fittings - Brass

## Acpar

### Flare Nuts - Short Barrel



Cat. No.	Part No.	Size	SWP kPa	Pack Qty	List Price \$ Exc. GST
190060	201-0404	1/4"	5200	5	\$16.53
190013	501-0505	5/16"	4200	1	\$8.07
190061	201-0504	5/16" FF x 1/4" Tube	5200	2	\$7.87
190062	201-0606	3/8"		5	\$22.54

\* Note for use with R410A Refrigerant

Cat. No.	Part No.	Size	SWP kPa	Pack Qty	List Price \$ Exc. GST
190064	201-0808	1/2"	5200	2	\$10.99
190066	201-1010	5/8"			\$14.71
190068	201-1212	3/4"			\$24.35

### Flare Nuts - Frost Proof



Cat. No.	Part No.	Size	SWP kPa	Pack Qty	List Price \$ Exc. GST
190070	202-0404	1/4"	5200	5	\$27.27
190023	502-0505	5/16"	4200	1	\$14.67
190072	202-0606	3/8"	5200	5	\$35.69

Cat. No.	Part No.	Size	SWP kPa	Pack Qty	List Price \$ Exc. GST
190074	202-0808	1/2"	5200	2	\$18.58
190076	202-1010	5/8"			\$25.11
190078	202-1212	3/4"			\$45.94

### Flare Nuts - Frost Proof Reducing

Cat. No.	Part No.	Size	SWP kPa	Pack Qty	List Price \$ Exc. GST
190071	202-0604	3/8" FF x 1/4" Tube	5200	2	\$21.08
190054	502-0806	1/2" FF x 3/8" Tube	4200	5	\$21.80

Cat. No.	Part No.	Size	SWP kPa	Pack Qty	List Price \$ Exc. GST
190055	502-1006	5/8" FF x 3/8" Tube	4200	2	\$29.41
190056	502-1008	5/8" FF x 1/2" Tube			\$31.82

### Flare Copper Bonnets



Cat. No.	Part No.	Size	SWP kPa	Pack Qty	List Price \$ Exc. GST
190200	RCB006-410A	1/4" SAE	4500	5	\$2.45
190201	RCB010-410A	3/8" SAE			\$2.91
190204	RCB013-410A	1/2" SAE		3	\$3.31

Cat. No.	Part No.	Size	SWP kPa	Pack Qty	List Price \$ Exc. GST
190206	RCB016-410A	5/8" SAE	4500	3	\$3.91
190108	1105-12	3/4" SAE		1	\$3.19

### Flare Copper Washers

Use on brass to brass flare connections to prevent leaks

Cat. No.	Part No.	Size	Pack Qty	List Price \$ Exc. GST
190210	109-04	1/4"	10	\$5.41
190211	109-06	3/8"		\$7.06
190212	109-08	1/2"		\$12.86

Cat. No.	Part No.	Size	Pack Qty	List Price \$ Exc. GST
190213	109-10	5/8"	5	\$8.50
190214	109-12	3/4"		\$7.06

### Flare Seal Cap Nuts



Cat. No.	Part No.	Size	SWP kPa	Pack Qty	List Price \$ Exc. GST
190122	275-04	1/4"	5200	1	\$4.73
190124	275-06	3/8"			\$11.60
190126	275-08	1/2"			\$15.56

Cat. No.	Part No.	Size	SWP kPa	Pack Qty	List Price \$ Exc. GST
190127	275-10	5/8"	5200	1	\$28.39
190128	275-12	3/4"			\$35.24

### Flare Seal Plugs



Cat. No.	Part No.	Size	Pack Qty	List Price \$ Exc. GST
190132	270-04	1/4"	1	\$8.18
190134	270-06	3/8"		\$10.48
190136	270-08	1/2"		\$11.40

Cat. No.	Part No.	Size	Pack Qty	List Price \$ Exc. GST
190137	270-10	5/8"	1	\$21.37
190138	270-12	3/4"		\$27.16



global brands - local service

www.actrol.com.au

**ACTROL**

Subject to change without notice



# Line Fittings - Brass

## Acpar

### Pipe Plugs - Male BSP



Cat. No.	Part No.	Size	Pack Qty	List Price \$ Exc. GST
190141	280-02	1/8"	1	\$8.18
190142	280-04	1/4"		\$12.20
190143	280-06	3/8"		\$16.63

Cat. No.	Part No.	Size	Pack Qty	List Price \$ Exc. GST
190144	280-08	1/2"	1	\$22.32
190145	280-12	3/4"		\$35.07

### Unions - Male Flare to Male Flare



Cat. No.	Part No.	Size		SWP kPa	Pack Qty	List Price \$ Exc. GST
		M Flare	M Flare			
191003	240-0404	1/4"	1/4"	5200	1	\$8.82
191005	240-0505	5/16"	5/16"			\$17.23
191006	240-0606	3/8"	3/8"			\$15.60

Cat. No.	Part No.	Size		SWP kPa	Pack Qty	List Price \$ Exc. GST
		M Flare	M Flare			
191007	240-0808	1/2"	1/2"	4200	1	\$16.71
191008	240-1010	5/8"	5/8"			\$31.62
191009	240-1212	3/4"	3/4"			\$39.36

### Unions - Male Flare to Male Flare - Reducing

Cat. No.	Part No.	Size		SWP kPa	Pack Qty	List Price \$ Exc. GST
		M Flare	M Flare			
191062	240-0504	5/16"	1/4"	5200	1	\$17.64
191064	240-0604	3/8"				\$18.19
191066	240-0804	1/2"				\$30.44
191068	240-0806		3/8"			\$24.78

Cat. No.	Part No.	Size		SWP kPa	Pack Qty	List Price \$ Exc. GST
		M Flare	M Flare			
191069	200-1004	5/8"	1/4"	4200	1	\$37.49
191070	200-1006		3/8"			\$43.10
191071	240-1008		1/2"	5200		\$38.57
191073	200-1210	3/4"	5/8"	4200		\$59.53

### Unions - Male Flare to Female Flare



Cat. No.	Part No.	Size		SWP kPa	Pack Qty	List Price \$ Exc. GST
		M Flare	F Flare			
191015	245-0404	1/4"	1/4"	5200	1	\$29.46
191017	245-0406		3/8"			\$21.93
191018	245-0408		1/2"			\$26.94
191019	205-0410	5/16"	5/8"	4200		\$62.67
191020	245-0504		1/4"	5200		\$20.73
191024	245-0604		3/8"			\$15.77
191026	245-0606	3/8"				\$16.09
191027	245-0608	1/2"		\$23.59		
191028	205-0610		5/8"	4200		\$40.68

Cat. No.	Part No.	Size		SWP kPa	Pack Qty	List Price \$
		M Flare	F Flare			Exc. GST
191030	245-0804	1/2"	1/4"	5200	1	\$22.80
191032	245-0806		3/8"			\$22.80
191034	205-0808		1/2"	4200		\$46.59
191035	245-0810		5/8"	5200		\$33.32
191036	205-0812		3/4"	4200		\$74.27
191039	245-1008	5/8"	1/2"	5200		\$33.49
191040	245-1012		3/4"			\$54.66
191042	245-1210	3/4"	5/8"			\$47.82

### Unions - Female Flare to Female Flare



Cat. No.	Part No.	Size		Pack Qty	List Price \$ Exc. GST
		F Flare	F Flare		
191045	226-0404	1/4"	1/4"	1	\$24.51
191048	226-0606	3/8"	3/8"		\$30.70
191050	226-0808	1/2"	1/2"		\$45.72



global brands - local service

Subject to change without notice

# Solutions Online

*Manage Your Account Online*

Statements

Pay  
Accounts

Flexitrak

Solutions  
Cards

Invoices

Product  
Pricing

ARC  
Reports



**actrol.com.au**

***ACTROL***





# Line Fittings - Brass

**Acpar**

## Unions – Male Flare to Male BSP



Cat. No.	Part No.	Size		Pack Qty	List Price \$ Exc. GST	Cat. No.	Part No.	Size		Pack Qty	List Price \$ Exc. GST
		M Flare	M BSP					M Flare	M BSP		
191125	221-0402	1/4"	1/8"	1	\$9.65	191143	221-0804	1/2"	1/4"	1	\$21.58
191126	221-0402L		1/8" Long Taper		\$16.36	191144	221-0806		3/8"		\$15.77
191127	221-0404		1/4"		\$12.79	191145	221-0808		1/2"		\$18.95
191129	221-0406		3/8"		\$16.63	191146	221-0812		3/4"		\$45.41
191130	221-0408		1/2"		\$25.15	191150	221-1008	5/8"	1/2"		\$29.94
191136	221-0602	3/8"	1/8"	1	\$19.22	191151	221-1012		3/4"		\$38.32
191137	221-0604		1/4"		\$14.38	191155	221-1208	3/4"	1/2"		\$36.39
191138	221-0606		3/8"		\$17.68	191156	221-1212		3/4"		\$28.20
191139	221-0608		1/2"		\$21.96						
191140	221-0612		3/4"		\$29.64						

## Unions – Male Flare to Female NPT



Cat. No.	Part No.	Size		Pack Qty	List Price \$ Exc. GST
		M Flare	F NPT		
1910951	247-0402	1/4"	1/8"	1	\$15.37

## Unions – Male Flare to Female BSP



Cat. No.	Part No.	Size		Pack Qty	List Price \$ Exc. GST	Cat. No.	Part No.	Size		Pack Qty	List Price \$ Exc. GST
		M Flare	F BSP					M Flare	F BSP		
191095	246-0402	1/4"	1/8"	1	\$16.41	191103	246-0604	3/8"	1/4"	1	\$24.98
191096	246-0404		1/4"		\$16.84	191104	246-0606		3/8"		\$40.23
191097	246-0406		3/8"		\$23.44	191105	246-0608		1/2"		\$49.25
191098	206-0408		1/2"		\$53.12	191108	246-0806	1/2"	3/8"		\$52.63
						191109	246-0808		1/2"		\$52.63

## Unions – Male BSP to Male BSP

Cat. No.	Part No.	Size		Pack Qty	List Price \$ Exc. GST
		M BSP	M BSP		
191171	251-0202	1/8"	1/8"	1	\$10.28
191172	251-0404	1/4"	1/4"		\$16.33
191173	251-0606	3/8"	3/8"		\$16.41
191174	251-0808	1/2"	1/2"		\$23.95
191175	251-1212	3/4"	3/4"		\$35.74

## Reducing



Cat. No.	Part No.	Size		Pack Qty	List Price \$ Exc. GST
		M BSP	M BSP		
191181	251-0402	1/4"	1/8"	1	\$11.68
191183	251-0604	3/8"	1/4"		\$17.88
191185	251-0806	1/2"	3/8"		\$25.29



global brands - local service

www.actrol.com.au

**ACTROL**

Subject to change without notice

100

Section 3

© 2015 Actrol Parts Pty Ltd ABN: 93 142 654 564





# Line Fittings - Brass

## Acpar

### Unions - Male BSP to Female Flare



Cat. No.	Part No.	Size		Pack Qty	List Price \$ Exc. GST
		M BSP	F Flare		
192061	214-0204	1/8"	1/4"	1	\$31.61
192062	214-0404	1/4"	1/4"		\$31.61

### Unions - Female BSP to Female BSP (Gas Couplings)



Cat. No.	Part No.	Size		Pack Qty	List Price \$ Exc. GST
		F BSP	F BSP		
192131	228-0202	1/8"	1/8"	1	\$17.16
192132	228-0404	1/4"	1/4"		\$21.17
192135	228-0606	3/8"	3/8"		\$38.68
192137	228-0808	1/2"	1/2"		\$51.23
192138	228-1212	3/4"	3/4"		\$61.50

### Unions - Male BSP to Female BSP (Gas Bushes)



Cat. No.	Part No.	Size		Pack Qty	List Price \$ Exc. GST
		M BSP	F BSP		
192014	216-0402	1/4"	1/8"	1	\$15.34
192016	216-0406		3/8"		\$26.53
192019	216-0604	3/8"	1/4"		\$29.00
192022	216-0804	1/2"			\$27.09
192023	216-0806		3/8"		\$30.23
192027	216-1208	3/4"	1/2"		\$41.79
192028	216-1612	1"	3/4"		\$82.17

### Unions - Male Flare to Solder



Cat. No.	Part No.	Size		Pack Qty	List Price \$ Exc. GST
		M Flare	Solder		
192031	218-0404	1/4"	1/4"	1	\$8.22
192033	218-0406		3/8"		\$11.60
192040	218-0606	3/8"	1/2"		\$10.84
192041	218-0608		3/8"		\$19.43
192044	218-0806	1/2"	1/2"		\$16.24
192045	218-0808		5/8"		\$16.24
192046	208-0810		1/2"		\$27.47
192050	218-1008	5/8"	5/8"		\$30.39
192051	218-1010		3/4"		\$20.65
192056	218-1212	3/4"	3/4"		\$32.81

### Unions - Male ACME

Cat. No.	Part No.	Size	Pack Qty	List Price \$ Exc. GST
192150	275-0408	1/2" F ACME x 1/4" M Flare	1	\$31.45
192151	272-0804	1/2" M ACME x 1/4" F Flare		\$23.78

### Unions - Male BSP to Solder

Cat. No.	Part No.	Size		Pack Qty	List Price \$ Exc. GST
		M BSP	Solder		
192084	219-0808	1/2"	1/2"	1	\$21.05
192094	219-1212	3/4"	3/4"		\$38.68

### Unions - Female BSP to Solder

Cat. No.	Part No.	Size		PackQty	List Price \$ Exc. GST
		M BSP	Solder		
192148	233-0808	1/2"	1/2"	1	\$46.59
192149	233-0606	3/8"	3/8"		\$43.37



global brands - local service

www.actrol.com.au

**ACTROL**

Subject to change without notice



# Line Fittings - Brass

## Acpar

### Elbows - Male Flare to Male Flare



Cat. No.	Part No.	Size		SWP kPa	Pack Qty	List Price \$ Exc. GST
		M Flare	M Flare			
193002	261-0404	1/4"	1/4"	5200	1	\$40.23
193004	261-0606	3/8"	3/8"	5200		\$40.23
193005	261-0808	1/2"	1/2"	5200		\$38.32
193006	261-1010	5/8"	5/8"	5200		\$39.72

### Elbows - Male Flare to Female Flare



Cat. No.	Part No.	Size		SWP kPa	Pack Qty	List Price \$ Exc. GST
		M Flare	F Flare			
193011	260-0404	1/4"	1/4"	5200	1	\$28.33

### Elbows - Male Flare to Male BSP



Cat. No.	Part No.	Size		Pack Qty	List Price \$ Exc. GST
		M Flare	M BSP		
193112	222-0402	1/4"	1/8"	1	\$33.73
193113	222-0404		1/4"		\$37.94
193114	222-0406		3/8"		\$39.57
193120	222-0604	3/8"	1/4"		\$38.93
193121	222-0606		3/8"		\$42.31
193122	222-0608		1/2"		\$43.69

Cat. No.	Part No.	Size		Pack Qty	List Price \$ Exc. GST
		M Flare	M BSP		
193127	222-0808	1/2"	1/2"	1	\$43.89
193131	222-1008	5/8"			\$34.63
193134	222-1212	3/4"	3/4"		\$56.35

### Tees - 3 Way Male Flare



Cat. No.	Part No.	Size		SWP kPa	Pack Qty	List Price \$ Exc. GST
		M Flare Line	M Flare Branch			
194013	230-040404	1/4" x 1/4"	1/4"	5200	1	194013
194015	230-060606	3/8" x 3/8"	3/8"			194015
194017	230-080808	1/2" x 1/2"	1/2"			194017
194018	230-101010	5/8" x 5/8"	5/8"			194018
194019	230-121212	3/4" x 3/4"	3/4"			194019

### Tees - Male Flare Line to Female Flare Branch



Cat. No.	Part No.	Size		SWP kPa	Pack Qty	List Price \$ Exc. GST
		M Flare Line	F Flare Branch			
194075	232-040404	1/4" x 1/4"	1/4"	5200	1	\$32.52

### Tees - Male Flare Line to Male BSP Branch



Cat. No.	Part No.	Size		Pack Qty	List Price \$ Exc. GST
		M Flare Line	M BSP Branch		
194082	233-040402	1/4" x 1/4"	1/8"	1	\$44.55
194086	233-040404		1/4"		\$55.24

### Tees - Male Flare Line to Female BSP Branch



Cat. No.	Part No.	Size		Pack Qty	List Price \$ Exc. GST
		M Flare Line	F BSP Branch		
194106	409-040402	1/4" x 1/4"	1/8"	1	\$79.63
194108	409-040404		1/4"		\$112.65



global brands - local service

www.actrol.com.au

**ACTROL**

Subject to change without notice



## Hand Valves

### Castel

#### 6210 Series - 2 Way Line - Male Flare



Cat. No.	Model No.	Description	Connection	Max. Working Press. kPa	List Price \$ Exc. GST
195121	6210/2	Flare Hand Shut Off Valve	1/4"	2800	\$51.19
195122	6210/3		3/8"		\$68.52
195123	6210/4		1/2"		\$69.84
195124	6210/5		5/8"		\$78.49
195125	6210/6		3/4"		\$120.79



### Heldon

#### 2100 Series - 2 Way Line - Male Flare

Cat. No.	Model No.	Description	Connection	Max. Working Press. kPa	List Price \$ Exc. GST
195002	2100-0404	Flare Hand Shut Off Valve	1/4"	2800	\$167.97
195004	2100-0606		3/8"		\$184.20
195005	2100-0808		1/2"		\$251.91
195006	2100-1010		5/8"		\$239.09
	2100-1212		3/4"		P.O.A



### Castel

#### 6220 Series - 2 Way Line - Female Solder



Cat. No.	Model No.	Description	Connection	Max. Working Press. kPa	List Price \$ Exc. GST
195126	6220/2	Solder Hand Shut Off Valve	1/4"	2800	\$51.48
195127	6220/3		3/8"		\$68.19
195128	6220/4		1/2"		\$69.84
195129	6220/5		5/8"		\$82.10
195130	6220/6		3/4"		\$120.79

## Packed Cap Valves

### Castel

#### 6410 Series - 2 Way Line - Male Flare



Cat. No.	Model No.	Size: Flare	Max. Working Press. kPa	List Price \$ Exc. GST
196039	6410/2	1/4"	4500	\$83.79
196051	6410/3	3/8"		\$90.21
196052	6410/4	1/2"		\$91.14
196053	6410/5	5/8"		\$95.99
196054	6410/6	3/4"		\$181.41

#### 6420 Series - 2 Way Line - Female Solder

Cat. No.	Model No.	Size: ODF Solder	Max. Working Press. kPa	List Price \$ Exc. GST
196056	6420/2	1/4"	4500	\$83.79
196057	6420/3	3/8"		\$90.21
196058	6420/4	1/2"		\$91.14
196059	6420/5	5/8"		\$94.07
196060	6420/6	3/4"		\$168.56
196061	6420/7	7/8"		\$182.71



global brands - local service

[www.actrol.com.au](http://www.actrol.com.au)

**ACTROL**

Subject to change without notice

103

Section 3

© 2015 Actrol Parts Pty Ltd ABN: 93 142 654 564





# Packed Cap Valves

## Castel

### 6512 Series - 2 Way Line - Backseating

Female Solder with 'T' Handle



Cat. No.	Model No.	Size: ODF Solder	Max. Working Press. kPa	List Price \$ Exc. GST
196141	6512/7	7/8"	4500	\$300.03
196142	6512/9	1 1/8"		\$313.81
196143	6512/11	1 3/8"		\$452.83
196144	6512/13	1 5/8"		\$767.70
196145	6512/17	2 1/8"		\$1,367.34

### 6532 Series - 2 Way Angle - Backseating

Female Solder with 'T' Handle

Cat. No.	Model No.	Size: ODF Solder	Max. Working Press. kPa	List Price \$ Exc. GST
196149	6532/9	1 1/8"	4500	\$356.26
196150	6532/11	1 3/8"		\$485.98
196151	6532/13	1 5/8"		\$1,081.75

### 6110 Series - 2 Way Angle

Male Flare Side to Male Pipe Thread Bottom



Cat. No.	Part No.	Size		Max. Working Press. kPa	List Price \$ Exc. GST
		Flare	NPT*		
196176	6110/22	1/4"	1/4"	4500	\$46.94
196177	6110/23		3/8"		\$49.43
196183	6110/32	3/8"	1/4"		\$48.88
196178	6110/33		3/8"		\$49.93
196179	6110/43	1/2"	3/8"		\$69.25
196180	6110/44		1/2"		\$71.38
196181	6110/54	5/8"	1/2"		\$86.22
196182	6110/66	3/4"	3/4"		\$163.14



## Heldon

### 2201 Series - 2 Way Angle

Male Flare Side to Male Pipe Thread Bottom

Cat. No.	Part No.	Size		Max. Working Press. kPa	List Price \$ Exc. GST
		Flare	NPT*		
196072	2201-0404	1/4"	1/4"	4500	\$99.20
196073	2201-0406		3/8"		\$100.39
196074	2201-0408		1/2"		\$215.88
196075	2201-0604	3/8"	1/4"		\$101.31
196076	2201-0606		3/8"		\$111.57
196077	2201-0608		1/2"		\$168.63
196079	2201-0806	1/2"	3/8"		\$163.59
196080	2201-0808		1/2"		\$124.69



global brands - local service

www.actrol.com.au

**ACTROL**

Subject to change without notice



# Ball Valves

## Alco

### BVS Series - Ball Valves with Access Port

#### Features

- Hermetic design
- Copper connections
- Maximum working pressure: 4500 kPa
- Full flow design
- Bi-directional flow characteristics
- Access valve mounted on valve body (BVS)
- Valve stem cap retained by strap attached to main body



Cat. No.	Model No.	Part No.	Connection	Overall Length: mm	List Price \$ Exc. GST
196250	BVS-014	806750	1/4"	120	\$77.30
196251	BVS-038	806752	3/8"	118	\$77.30
196252	BVS-012	806754	1/2"	127	\$89.56
196253	BVS-058	806756	5/8"		\$89.84
196254	BVS-034	806757	3/4"	157	\$111.98
196255	BVS-078	806758	7/8"		\$113.53
196256	BVS-118	806759	1 1/8"	169	\$161.09
196257	BVS-138	806761	1 3/8"	231	\$228.95
196258	BVS-158	806762	1 5/8"	277	\$337.46
196259	BVS-218	806764	2 1/8"	297	\$486.58
196260	BVS-258	806765	2 5/8"		\$513.50
196261	BVS-318	806766	3 1/8"		\$563.04

### BVE Series - Ball Valves without Access Port

Cat. No.	Model No.	Part No.	Connection	Overall Length: mm	List Price \$ Exc. GST
196270	BVE-014	806730	1/4"	120	\$66.18
196271	BVE-038	806732	3/8"	118	\$66.01
196272	BVE-012	806734	1/2"	127	\$78.00
196273	BVE-058	806736	5/8"		\$78.61
196274	BVE-034	806737	3/4"	157	\$98.96
196275	BVE-078	806738	7/8"		\$103.92
196276	BVE-118	806739	1 1/8"	169	\$142.56
196277	BVE-138	806741	1 3/8"	231	\$213.18
196278	BVE-158	806742	1 5/8"	277	\$310.35
196279	BVE-218	806744	2 1/8"	297	\$466.58
196280	BVE-258	806745	2 5/8"		\$504.52
196281	BVE-318	806746	3 1/8"		\$540.56



## Castel

### 6590A Series - Ball Valves with Access Port



Cat. No.	Model No.	Connection ODF	Port Size: mm	Overall Length: mm	List Price \$ Exc. GST
		1/4"	10	121	P.O.A
196101	6590/3A	3/8"	10		\$103.36
196102	6590/4A	1/2"	10		\$103.36
196103	6590/5A	5/8"	15	138	\$124.18
196104	6590/6A	3/4"	15	141	\$124.18
196105	6590/7A	7/8"	19	175	\$159.19
196106	6590/9A	1 1/8"	25	206	\$204.05
196107	6590/11A	1 3/8"	32	262	\$276.17
196108	6590/13A	1 5/8"	38		\$409.85
196109	6590/17A	2 1/8"	50	303	\$593.98
196110	6591/21A	2 5/8"	50		\$633.72



global brands - local service

www.actrol.com.au

**ACTROL**

Subject to change without notice

105

Section 3

© 2015 Actrol Parts Pty Ltd ABN: 93 142 654 564

# Ball Valves



**Castel**

## 6590A Series - Ball Valves without Access Port



Cat. No.	Model No.	Connection ODF	Port Size: mm	Overall Length: mm	List Price \$ Exc. GST
196091	6590/2	1/4"	10	121	\$94.42
196062	6590/3	3/8"	10		\$95.65
196063	6590/4	1/2"	10		\$95.65
196064	6590/5	5/8"	15	138	\$117.41
196065	6590/6	3/4"	15	141	\$117.41
196071	6590/7	7/8"	19	175	\$154.11
196066	6590/9	1 1/8"	25	206	\$200.93
196067	6590/11	1 3/8"	32	262	\$276.49
196068	6590/13	1 5/8"	38		\$416.22
196069	6590/17	2 1/8"	50	303	\$608.88
196070	6591/21	2 5/8"	50		\$621.26

3



**Danfoss**

## GBC Access Series - Ball Valves with Access Port



Cat. No.	Part No.	Model No.	Connection ODF	List Price \$ Exc. GST
196321	009G7050	GBC6S	1/4"	\$109.23
196322	009G7051	GBC10S	3/8"	\$109.23
196323	009G7052	GBC12S	1/2"	\$109.23
196324	009G7053	GBC16S	5/8"	\$109.23
196325	009G7054	GBC18S	3/4"	\$146.80
196326	009G7055	GBC22S	7/8"	\$152.15
196327	009G7056	GBC28S	1 1/8"	\$213.56
196328	009G7057	GBC35S	1 3/8"	\$324.04
196329	009G7058	GBC42S	1 5/8"	\$480.69
196330	009G7059	GBC54S	2 1/8"	\$633.26
196331	009G7066	GBC67S RP	2 5/8"	\$974.16

## GBC Series - Ball Valves without Access Port

Cat. No.	Part No.	Model No.	Connection ODF	List Price \$ Exc. GST
196301	009G7020	GBC6S	1/4"	\$96.87
196302	009G7021	GBC10S	3/8"	\$96.87
196303	009G7022	GBC12S	1/2"	\$96.87
196304	009G7023	GBC16S	5/8"	\$96.87
196305	009G7024	GBC18S	3/4"	\$134.42
196306	009G7025	GBC22S	7/8"	\$139.77
196307	009G7026	GBC28S	1 1/8"	\$201.14
196308	009G7027	GBC35S	1 3/8"	\$311.75
196309	009G7028	GBC42S	1 5/8"	\$379.77
196310	009G7029	GBC54S	2 1/8"	\$620.85
196311	009G7036	GBC67S RP	2 5/8"	\$961.76



global brands - local service

[www.actrol.com.au](http://www.actrol.com.au)

**ACTROL**

Subject to change without notice

106

Section 3

© 2015 Actrol Parts Pty Ltd ABN: 93 142 654 564



# Valves and Fittings



**Acpar**

Cylinder Adaptors – with Washer

Cat. No.	Part No.	Size		Pack Qty	List Price \$ Exc. GST
197103	203-0412	1/4" Male Flare	3/4" Female BSP	1	\$19.47
197104	203-0612	3/8" Male Flare			\$24.47
197105	20-0812	1/2" Male Flare			\$41.43
197111	203-0512	5/16" Male Flare			\$23.08
197152	21-0812	1/2" ACME			\$39.18

Cylinder Valve Seal Cap

Cat. No.	Part No.	Size	PackQty	List Price \$ Exc. GST
197098	203-0012	3/4" Female BSP Brass Cylinder Cap	1	\$25.02
197175	5612354	3/4" Female BSP Plastic Cylinder Cap		\$5.01

Washers

Cat. No.	Part No.	Size	Pack Qty	List Price \$ Exc. GST
197112	20-WASH	Fibre Washer To Suit 3/4" Female BSP	2	\$4.49



Swivel Connectors

Cat. No.	Part No.	Size	SWP kPa	Pack Qty	List Price \$ Exc. GST
198001	295-04	1/4" Female Flare	4500	1	\$23.23
198002	295-06	3/8" Female Flare			\$24.55
198003	295-08	1/2" Female Flare			\$30.19
198004	295-10	5/8" Female Flare			\$34.24
198005	95-12	3/4" Female flare			\$77.92

Swivel Tail Adaptors

Cat. No.	Part No.	Size		Pack Qty	List Price \$ Exc. GST
		Female Flare	Solder		
198030	210-0404	1/4"	1/4"	1	\$13.55
198031	210-0606	3/8"	3/8"		\$14.23
198032	210-0808	1/2"	1/2"		\$17.48
198033	210-1010	5/8"	5/8"		\$19.85
198034	210-1212	3/4"	3/4"		\$43.10



**Supco**

Bullet Line Piercing Valve

Cat. No.	Part No.	Size: OD Tube	List Price \$ Exc. GST
198021	BPV-31	1/4", 5/16", 3/8"	\$21.59
198029	BPV-21	1/2", 5/8"	\$28.20



global brands - local service

Subject to change without notice

www.actrol.com.au

**ACTROL**

# Valves and Fittings

**acpar**

**Acpar**

Rotalock Valves - including seal ring



Cat. No.	Part No.	Connections		Pack Qty	List Price \$ Exc. GST	Cat. No.	Part No.	Connections		Pack Qty	List Price \$ Exc. GST	
		Rotalock Ring	Tube Size: Solder					Rotalock Ring	Tube Size: Solder			
197255	401-061220	3/4"	3/8"	1	\$70.88	197267	401-142030	1 1/4"	7/8"	1	\$130.98	
197256	401-081220		1/2"		\$78.34	197269	401-182030				\$147.59	
197257	401-061620	1"	3/8"		\$70.88	197271	401-142830	1 3/4"	1 1/8"		\$139.99	
197259	401-081620		1/2"		\$70.88	197273	401-182835				\$212.14	
197261	401-101620		5/8"		\$78.34	197275	401-222835		1 5/8"		\$230.72	
197263	401-102030				\$80.84	197277	401-262835				\$245.33	
197265	401-122030	1 1/4"	3/4"		\$122.22	197279	401-263650	2 1/4"			\$470.91	

\* The Rotalock Ring size is determined by the thread size within the Rotalock nut.

## Teflon Seal Rings

For Rotalock Valves



Cat. No.	Part No.	Description	Suits	Pack Qty	List Price \$ Exc. GST
197281	400-12	Rotalock Seal	3/4" RL	1	\$10.26
197283	400-16	Rotalock Seal	1" RL		\$10.26
197285	400-20	Rotalock Seal	1 1/4" RL		\$10.26
197287	400-28	Rotalock Seal	1 3/4" RL		\$10.26
197289	400-36	Rotalock Seal	2 1/4" RL		\$10.26
197290	400-Multi Pack	Assorted Rotalock Seals	3/4" - 2 1/4" RL	5	\$25.31

## Rotalock Valve Caps



Cat. No.	Part No.	Description	Suits	Pack Qty	List Price \$ Exc. GST
197292	411-203035	Rotalock Valve Caps	20mm, 30mm & 35mm Rotalock Valve Bodies	3	\$27.47



global brands - local service

Subject to change without notice

108

Section 3

www.actrol.com.au

**ACTROL**

© 2015 Actrol Parts Pty Ltd ABN: 93 142 654 564

# Valves and Fittings

**acpar**

**Acpar**

Rotalock Straight Connector



Cat. No.	Part No.	Connections		Pack Qty	List Price \$ Exc. GST
		Rotalock Ring	Tube Size: Solder		
197301	402-0612	¾"	⅜"	1	\$36.54
197303	402-0416	1"	¼"		\$37.21
197305	402-0816		½"		\$37.21
197307	402-1016		⅝"		\$39.51
197309	402-1420		⅞"		\$62.60
197311	402-1820	1 ¼"	1 ⅛"		\$71.69
197313	402-1828	1 ¾"			\$92.07

Rotalock Elbow Connector



Cat. No.	Part No.	Connections		Pack Qty	List Price \$ Exc. GST
		Rotalock Ring	Tube Size: Solder		
197321	403-0612	3/4"	3/8"	1	\$41.13
197323	403-0816	1"	1/2"		\$46.98
197325	403-1016		5/8"		\$48.99
197327	403-1216		3/4"		\$49.06
197329	403-1416		7/8"		\$61.65
197331	403-1420	1 1/4"	1 1/8"		\$68.17
197333	403-1820				\$92.74
197335	403-1828	1 3/4"			\$110.04

3

**SKU**  
REFRIGERATION

Simply Reliable

**100%**  
**AUSTRALIAN**  
**OWNED**



**MUELLER**  
REFRIGERATION

**SANHUA**



**BVA**



Telephone: 03 9735 2313  
[www.SKUrefrig.com](http://www.SKUrefrig.com)

**W**estermeyer  
Industries Inc.



# Line Fittings - Copper



**Acpar**

## Couplings/Unions - Female to Female - Solder



Cat. No.	Part No.	ID	SWP*: kPa	Pack Qty	List Price \$ Exc. GST
199202	RCC006-410A	1/4"	4500	5	\$4.10
199206	RCC010-410A	3/8"			\$4.17
199208	RCC013-410A	1/2"			\$5.37
199210	RCC016-410A	5/8"			\$9.93
199212	RCC019-410A	3/4"	4500	2	\$7.07
199214	RCC022-410A	7/8"			\$8.67

Cat. No.	Part No.	ID	SWP*: kPa	Pack Qty	List Price \$ Exc. GST
199216	RCC025-410A	1"	4300	2	\$12.05
199218	RCC029-410A	1 1/8"			\$14.37
199222	RCC035-410A	1 3/8"			\$10.99
199226	RCC041-410A	1 5/8"			\$14.44
199232	RCC054-410A	2 1/8"	4000	1	\$28.60
199238	RCC067-410A	2 5/8"	3800		\$46.07
199240	RCC076	3"	3500		\$65.74

## Reducing Couplings/Unions - Female to Female - Solder



Cat. No.	Part No.	ID x ID:	SWP*: kPa	Pack Qty	List Price \$ Exc. GST
199264	RRR01310-410A	1/2" x 3/8"	4800	2	\$2.70
199266	RRR01610-410A	5/8" x 3/8"			\$4.31
199268	RRR01613-410A	5/8" x 1/2"			\$4.31
199274	RRR01910-410A	3/4" x 3/8"			\$8.07
199276	RRR01913-410A	3/4" x 1/2"	4800	2	\$8.07
199278	RRR01916-410A	3/4" x 5/8"			\$8.07
199282	RRR02213-410A	7/8" x 1/2"			\$9.08
199284	RRR02216-410A	7/8" x 5/8"			\$9.33
199286	RRR02219-410A	7/8" x 3/4"	4600	1	\$9.13
199300	RRR02916-410A	1 1/8" x 5/8"			\$8.28
199302	RRR02919-410A	1 1/8" x 3/4"			\$8.28
199304	RRR02922-410A	1 1/8" x 7/8"			\$8.28

Cat. No.	Part No.	ID x ID	SWP*: kPa	Pack Qty	List Price \$ Exc. GST
199310	RRR03516-410A	1 <sup>3</sup> / <sub>8</sub> " x 5 <sup>8</sup> / <sub>8</sub> "	4600	1	\$12.84
199312	RRR03522-410A	1 <sup>3</sup> / <sub>8</sub> " x 7 <sup>8</sup> / <sub>8</sub> "			\$12.84
199314	RRR03529-410A	1 <sup>3</sup> / <sub>8</sub> " x 1 <sup>1</sup> / <sub>8</sub> "			\$12.84
199320	RRR04129-410A	1 <sup>5</sup> / <sub>8</sub> " x 1 <sup>1</sup> / <sub>8</sub> "	4500		\$18.47
199322	RRR04135-410A	1 <sup>5</sup> / <sub>8</sub> " x 1 <sup>3</sup> / <sub>8</sub> "			\$18.47
199330	RRR05429-410A	2 <sup>1</sup> / <sub>8</sub> " x 1 <sup>1</sup> / <sub>8</sub> "	4000		\$33.37
199332	RRR05435-410A	2 <sup>1</sup> / <sub>8</sub> " x 1 <sup>3</sup> / <sub>8</sub> "		\$33.37	
199334	RRR05441-410A	2 <sup>1</sup> / <sub>8</sub> " x 1 <sup>5</sup> / <sub>8</sub> "		\$33.37	
199340	RRR06735-410A	2 <sup>5</sup> / <sub>8</sub> " x 1 <sup>3</sup> / <sub>8</sub> "	3800	\$40.91	
199342	RRR06741-410A	2 <sup>5</sup> / <sub>8</sub> " x 1 <sup>5</sup> / <sub>8</sub> "		\$44.16	
199344	RRR06754-410A	2 <sup>5</sup> / <sub>8</sub> " x 2 <sup>1</sup> / <sub>8</sub> "		\$49.25	

## Reducing Couplings/Unions - Outside Diameter to Inside Diameter - Solder



Cat. No.	Part No.	OD x ID	SWP*: kPa	Pack Qty	List Price \$ Exc. GST
199386	RNN01310-410A	1/2" x 3/8"	4700	2	\$2.70
199390	RNN01610-410A	5/8" x 3/8"			\$4.31
199392	RNN01613-410A	5/8" x 1/2"			\$4.31
199394	RNN01913-410A	3/4" x 1/2"			\$7.28
199396	RNN01916-410A	3/4" x 5/8"	4700	2	\$7.28
199400	RNN02213-410A	7/8" x 1/2"			\$9.17
199402	RNN02216-410A	7/8" x 5/8"			\$9.17
199404	RNN02219-410A	7/8" x 3/4"			\$9.17
199408	RNN02913-410A	1 1/8" x 1/2"	4500	1	\$9.39

Cat. No.	Part No.	OD x ID	SWP*: kPa	Pack Qty	List Price \$ Exc. GST
199410	RNN02916-410A	1 <sup>1</sup> / <sub>8</sub> " x 5 <sup>5</sup> / <sub>8</sub> "	4500	1	\$9.39
199412	RNN02919-410A	1 <sup>1</sup> / <sub>8</sub> " x 3 <sup>3</sup> / <sub>4</sub> "			\$9.39
199414	RNN02922-410A	1 <sup>1</sup> / <sub>8</sub> " x 7 <sup>7</sup> / <sub>8</sub> "			\$9.39
199420	RNN03516-410A	1 <sup>3</sup> / <sub>8</sub> " x 5 <sup>5</sup> / <sub>8</sub> "			\$12.84
199422	RNN03522-410A	1 <sup>3</sup> / <sub>8</sub> " x 7 <sup>7</sup> / <sub>8</sub> "	4200		\$12.84
199424	RNN03529-410A	1 <sup>3</sup> / <sub>8</sub> " x 1 <sup>1</sup> / <sub>8</sub> "		\$12.84	
199432	RNN04129-410A	1 <sup>5</sup> / <sub>8</sub> " x 1 <sup>3</sup> / <sub>8</sub> "	4000	3800	\$18.47
199442	RNN05435-410A	2 <sup>1</sup> / <sub>8</sub> " x 1 <sup>3</sup> / <sub>8</sub> "	\$33.37		
199444	RNN05441-410A	2 <sup>1</sup> / <sub>8</sub> " x 1 <sup>5</sup> / <sub>8</sub> "			\$33.37

\* SWP= Safe working pressure @ 59°C



**global brands - local service**

[www.actrol.com.au](http://www.actrol.com.au)

**ACTROL**

Subject to change without notice

# Line Fittings - Copper

**acpar**

**Acpar**

## 90° Copper Elbows - Female to Female - Solder



Cat. No.	Part No.	ID x ID	SWP*: kPa	Pack Qty	List Price \$ Exc. GST
201302	REN006-410A	1/4"	4300	5	\$9.81
201304	REN010-410A	3/8"			\$10.07
201306	REN013-410A	1/2"			\$10.19
201307	REN016-410A	5/8"		3	\$18.61
201308	REN019-410A	3/4"			\$19.99
201309	REN022-410A	7/8"			\$28.01
201310	REN025-410A	1"	4200	2	\$25.63
201311	REN029-410A	1 1/8"	4000		\$30.64

Cat. No.	Part No.	ID x ID	SWP*: kPa	Pack Qty	List Price \$ Exc. GST
201312	REN032-410A	1 1/4"	4000	2	\$37.74
201313	REN035-410A	1 3/8"	3800		\$49.19
201315	REN041	1 5/8"	3500		\$81.30
201316	103-2626-410A	1 5/8"	4200		\$94.38
201317	REN050	2"	3000	1	\$76.65
201318	REN054	2 1/8"	2800		\$79.31
201322	REN067	2 5/8"	2500		\$75.41
201324	REN076	3"	2100		\$122.80

## 45° Copper Elbows - Female to Female - Solder



Cat. No.	Part No.	ID x ID	SWP*: kPa	Pack Qty	List Price \$ Exc. GST
201340	REF010-410A	3/8"	4300	3	\$6.42
201342	REF013-410A	1/2"			\$6.69
201344	REF016-410A	5/8"			\$8.21
201346	REF019-410A	3/4"			\$12.97
201348	REF022-410A	7/8"			\$19.00
201350	REF025-410A	1"	4200	2	\$21.52

Cat. No.	Part No.	ID x ID	SWP*: kPa	Pack Qty	List Price \$ Exc. GST
201352	REF029-410A	1 1/8"	4000	2	\$22.04
201354	REF032-410A	1 1/4"			\$22.04
201356	REF035-410A	1 3/8"	3800		\$32.04
201360	REF041	1 5/8"	3500		\$49.59
201362	105-2626-410A	1 5/8"	4200	1	\$115.20
201366	REF054	2 1/8"	2800		\$46.86
201368	REF067	2 5/8"	2500		\$64.22

## 90° Copper Elbows - Male to Female - Solder



Cat. No.	Part No.	OD x ID	SWP*: kPa	Pack Qty	List Price \$ Exc. GST
201380	RBN010-410A	3/8" x 3/8"	4300	3	\$6.55
201382	RBN013-410A	1/2" x 1/2"			\$10.19
201384	RBN016-410A	5/8" x 5/8"			\$18.53
201386	RBN019-410A	3/4" x 3/4"	4200		\$26.08
201388	RBN022-410A	7/8" x 7/8"	4000		\$28.01

Cat. No.	Part No.	OD x ID	SWP*: kPa	Pack Qty	List Price \$ Exc. GST
201392	RBN029-410A	1½" x 1½"	3800	2	\$32.58
201396	RBN035	1⅜" x 1⅜"	3500		\$54.75
201400	RBN041	1⅝" x 1⅝"			\$71.76
201406	RBN054	2⅛" x 2⅛"	3000	1	\$83.14
201412	RBN067	2⅝" x 2⅝"	2800		\$75.41

## Copper 'P' Traps



Cat. No.	Part No.	ID x ID	SWP*: kPa	Pack Qty	List Price \$ Exc. GST
201450	RPT016-410A	5/8"	4300	1	\$32.90
201452	RPT019-410A	3/4"			\$40.91
201454	RPT022-410A	7/8"			\$50.17
201456	RPT029-410A	1 1/8"	4200		\$69.97

Cat. No.	Part No.	ID x ID	SWP*: kPa	Pack Qty	List Price \$ Exc. GST
201458	RPT035-410A	1 3/8"	4200	1	\$137.96
201460	RPT041-410A	1 5/8"	4000		\$178.73
201462	RPT054-410A	2 1/8"	3800		\$359.66

\* SWP= Safe working pressure @ 59°C



**global brands - local service**

[www.actrol.com.au](http://www.actrol.com.au)

**ACTROL**

Subject to change without notice

111

Section 3

© 2015 Actrol Parts Pty Ltd ABN: 93 142 654 564

# Line Fittings - Copper



**Acpar**

## Copper Tube End Caps (Stop Ends)



Cat. No.	Part No.	ID	SWP*: kPa	Pack Qty	List Price \$ Exc. GST
202089	1120-08	1/2"		1	\$6.42
202090	1120-10	5/8"			\$4.02
202091	1120-12	3/4"			\$5.50
202158	REC022-410A	7/8"	4600	2	\$7.61
202093	1120-16	1"		1	\$12.29
202162	REC029-410A	1 1/8"	4600		\$4.57
202095	1120-20	1 1/4"			\$15.46
202166	REC035-410A	1 3/8"	4600		\$11.25

Cat. No.	Part No.	ID	SWP*: kPa	Pack Qty	List Price \$ Exc. GST
202097	1120-24	1 1/2"		1	\$21.22
202170	REC041-410A	1 5/8"	4600		\$14.44
202101	1120-32	2"			\$26.75
202176	REC054-410A	2 1/8"	4300		\$29.27
202182	REC067-410A	2 5/8"	4000		\$40.98
202107	1120-48	3"			\$50.01
202188	REC102	4"	3500		\$144.06
202112	1120-80	5"			\$130.59

## Copper Tees



Cat. No.	Part No.	ID x ID x ID	SWP*: kPa	Pack Qty	List Price \$ Exc. GST
203200	RTE006-410A	1/4"	4500	3	\$6.96
203204	RTE010-410A	3/8"			\$8.40
203206	RTE013-410A	1/2"			\$8.81
203208	RTE016-410A	5/8"		2	\$9.08
203210	RTE019-410A	3/4"			\$14.63
203212	RTE022-410A	7/8"			\$21.05
203214	RTE025-410A	1"	4400	1	\$15.88

Cat. No.	Part No.	ID x ID x ID	SWP*: kPa	Pack Qty	List Price \$ Exc. GST
203216	RTE029-410A	1 1/8"	4300	1	\$18.53
203218	RTE032-410A	1 1/4"			\$18.53
203220	RTE035-410A	1 3/8"	4000		\$27.14
203224	RTE041-410A	1 5/8"			\$44.75
203230	RTE054-410A	2 1/8"	3800		\$77.13
203236	RTE067-410A	2 5/8"			\$99.83
203238	RTE076	3"	3500		\$196.61

\* SWP= Safe working pressure @ 59°C

## Copper Tube Clips



Cat. No.	Part No.	Size	Pack Qty	List Price \$ Exc. GST
202202	RTC006	1/4"	10	\$12.51
208002	1115-05	5/16"	1	\$1.27
202204	RTC010	3/8"	10	\$13.31
202206	RTC013	1/2"	5	\$6.09
202208	RTC016	5/8"		\$6.96
208006	115-12	3/4"	1	\$1.77
202212	RTC022	7/8"	5	\$8.40
208008	1115-16	1"	1	\$2.76
202216	RTC029	1 1/8"	3	\$10.87

Cat. No.	Part No.	Size	Pack Qty	List Price \$ Exc. GST
208010	1115-20	1 1/4"	1	\$8.01
202220	RTC035	1 3/8"	3	\$14.03
208012	1115-24	1 1/2"	1	\$10.00
208013	1115-26	1 5/8"		\$11.03
208014	1115-28	1 3/4"		\$12.77
208015	1115-32	2"		\$13.27
208016	1115-34	2 1/8"		\$14.99
208017	1115-40	2 1/2"		\$15.76



**global brands - local service**

Subject to change without notice

[www.actrol.com.au](http://www.actrol.com.au)

**ACTROL**

© 2015 Actrol Parts Pty Ltd ABN: 93 142 654 564



# Line Fittings

## Schrader/Access Valves and Fittings

### Half Union Type



Cat. No.	Brand	Part No.	Description	List Price \$ Exc. GST
207154	Refco	A31482	1/8" NPT	\$8.10
207153	Refco	A31484/10	1/4" NPT	\$11.47

### Multi-Size Solder Union



Cat. No.	Brand	Part No.	Description	List Price \$ Exc. GST
----------	-------	----------	-------------	------------------------

#### 2-Way

207152	Refco	A31724	1/4" or 3/8" OD Solder	\$8.05
--------	-------	--------	------------------------	--------

#### 3-Way

207156	Refco	A31720	3/16", 1/4" or 3/8" OD Solder	\$7.83
--------	-------	--------	-------------------------------	--------

#### 9-Way

207155	Refco	A31729	3/16", 1/4", 5/16", 3/8" or 1/2" OD Also fits 3/16", 1/4" and 5/16" Solder or 1/8" hole may be punched in larger size tube	\$12.85
--------	-------	--------	--	---------



### Female Flare Coupling with Copper Gasket

Cat. No.	Brand	Part No.	Description	List Price \$ Exc. GST
207114	Robinair	40410	1/4" Female Flare Connection	\$18.76

### Schrader Access Valve with Copper Tube Extension



Cat. No.	Part No.	Description	SWP kPa	Qty	List Price \$ Exc. GST
207087	A31003	3/16" OD Schrader Access Valve		1	\$12.36
207088	A31004	1/4" OD Schrader Access Valve	2000		\$10.65
207125	208-0504	5/16" OD Schrader Access Valve	4200	2	\$20.68
207174	A31006	3/8" OD Schrader Access Valve		1	\$15.88

### Solder and Flare Tees



Cat. No.	Brand	Part No.	Description	List Price \$ Exc. GST
207157	Refco	A31134	1/4" OD Tube or 3/8" Solder on Run 1/4" Male Flare Access on Branch	\$19.31
207158	Refco	A31512	1/4" Male Flare and 1/4" Male Flare Access on Run 1/8" Male NPT on Branch	\$19.31

### Swivel Tee - 1/4" Flare



Cat. No.	Brand	Part No.	Description	List Price \$ Exc. GST
207058	Refco	A31851	Access on Branch Female Swivel on One End of Run	\$32.94
207151		A31852	Access on One End of Run with permanent depressor on Female Swivel Branch	\$32.28

### Schrader Valve Cores



Cat. No.	Part No.	Description	Qty	List Price \$ Exc. GST
207128	204-1	Schrader Valve Core R410A Rated	5	\$22.82
207161	A31999	Schrader Valve Core	1	\$3.03

### Quick Seal Caps



Cat. No.	Part No.	Description	Qty	List Price \$ Exc. GST
207160	NFT5-4	Quick Seal Cap	1	\$3.03
207164	205-2	Schrader Cap And O-Ring R410A Rated		\$6.04

\* Suitable for R410A refrigerants



global brands - local service

www.actrol.com.au

**ACTROL**

Subject to change without notice

113

Section 3

© 2015 Actrol Parts Pty Ltd ABN: 93 142 654 564

# Line Fittings

Schrader/Access Valve Tools



## Refco

### Valve Core Tool



Cat. No.	Part No.	Description	List Price \$ Exc. GST
207105	A32000	Valve Core Tool, contains 6 extra Cores	\$55.42

### Valve Core Remover/Installer

These handy tools remove valve cores without losing the system charge. Designed specifically for use during evacuation or recharging of any system with valve core-type access ports, valve core remover/installers can cut service time for these procedures in half.

A valve core left in place considerably restricts flow during evacuation and charging. By removing the core, the restriction is eliminated and maximum flow results, greatly reducing the time required for pulldown and recharging.



Cat. No.	Part No.	Size	Description	List Price \$ Exc. GST
207100	32515	1/4"	This tool removes the valve core and holds it out of the way, inside the tool, to eliminate restriction and provide full flow.	\$276.15
207101	32520		For removing valve cores to permit full flow while retaining the charge - can also be used to replace leaky valve cores while the system is under pressure. Just attach the tool to the access fitting and unscrew the core. When done, close off the system using the top valve and replace the valve core.	\$322.76
207102	32520-1/2"-20UNF	5/16"		\$347.80

### Access Control Valve



Cat. No.	Part No.	Description	List Price \$ Exc. GST
207098	A33010	1/4" FF x 1/4" MF	Access Control Valve
207099	A-33410	5/16" FF x 1/4" MF	

### Quick Coupler Adaptors



Cat. No.	Brand	Part No.	Size	Description	List Price \$ Exc. GST
207077	Robinair	10468A	1/4" Male Flare x 3/16" Female Flare	Straight Connection	\$48.06
207085		40560A	1/4" Male Flare x 1/4" Female Flare		\$43.82
207086	Robinair	40563A		90 degree Elbow Connection	\$60.28
207119		10234		Straight Connection Quick Seal Auto Shut Off	\$93.13
207117		10296	1/4" Male Flare x 3/16" Female Flare		\$200.83
349039	Refco	R509/10	Packet of 10 Replacement Gaskets		\$11.29



global brands - local service

Subject to change without notice

www.actrol.com.au

**ACTROL**

# Copper Tubing

**SuperPairFR.**

## SuperPairFR

SuperPairFR is a pair of annealed refrigeration grade copper tubes, insulated with high quality fire rated closed cell rubber insulation. Available in traditional coils, SuperPairFR introduces 3 metre straight lengths of pre-insulated annealed copper to the trade for the first time. Utilising the 3 metre lengths, quoting for, and installing, common "back to back" air conditioning installations is faster and easier than ever before. Three metre lengths also mean that you can purchase only what you need.

SuperPair FR is the solution if you're installing split system air conditioners, and it's ideal for refrigeration installs as well. It's lightweight, easy to handle and simple to use. SuperPairFR is insulated with SuperlonFR which is an expanded closed cell nitrile rubber material that provides superior thermal insulation and the most efficient vapour barrier for the prevention of condensation. SuperPairFR provides you with the extra confidence of knowing you'll be using a high quality, fire rated product on every job.

### Features

- 3 metre straight lengths & 18 metre coils
- High quality annealed (soft) copper
- Insulation Fire Rated to AS1530.3 – 1999
- Complies with Building Code of Australia (BCA) requirements
- Individually boxed
- R410A rated
- Low thermal conductivity (K value)



Cat. No.	Copper Tube Sizes			Insulation Wall Thickness	Coil Length	List Price \$ Exc. GST	
	Outside Diameter: mm	Outside Diameter	Wall Thickness: mm				
208173	6.35	1/4"	0.8	10 mm	18 mt	P.O.A	
	9.52	3/8"				P.O.A	
208174	6.35	1/4"				P.O.A	
	12.7	1/2"				P.O.A	
208175	6.35	1/4"	1			P.O.A	
	15.88	5/8"	0.8			P.O.A	
208176	9.52	3/8"	1			P.O.A	
	15.88	5/8"	0.8			P.O.A	
208177	9.52	3/8"	1.15			P.O.A	
	19.05	3/4"	0.8			P.O.A	
208178	12.7	1/2"	1.15	P.O.A			
	19.05	3/4"	0.8	13 mm		P.O.A	
208194	6.35	1/4"				P.O.A	
	9.52	3/8"				P.O.A	
208195	6.35	1/4"				1	P.O.A
	12.7	1/2"				0.8	P.O.A
208196	6.35	1/4"				1	P.O.A
	15.88	5/8"	0.8	P.O.A			
208197	9.52	3/8"	1	P.O.A			
	15.88	5/8"	0.8	19 mm	P.O.A		
208203	6.35	1/4"			P.O.A		
	9.52	3/8"			P.O.A		
208204	6.35	1/4"			1	P.O.A	
	12.7	1/2"	0.8	P.O.A			
208205	6.35	1/4"	1	P.O.A			
	15.88	5/8"	0.8	P.O.A			
208206	9.52	3/8"	1	P.O.A			
	15.88	5/8"	0.8	P.O.A			
208207	9.52	3/8"	1.15	P.O.A			
	19.05	3/4"					



**global brands - local service**

[www.actrol.com.au](http://www.actrol.com.au)

**ACTROL**

Subject to change without notice

115

Section 3

© 2015 Actrol Parts Pty Ltd ABN: 93 142 654 564

# Copper Tubing

## SuperPairFR

SuperPairFR.



Cat. No.	Copper Tube Sizes			Insulation Wall Thickness	Straight Length	No. of Lengths Per Outer Carton	List Price \$ Exc. GST
	Outside Diameter: mm	Outside Diameter	Wall Thickness: mm				
208188	6.35	1/4"	0.8	10 mm	3 mt	6	P.O.A
	9.52	3/8"	0.8				P.O.A
208189	6.35	1/4"	0.8				P.O.A
	12.7	1/2"	0.8				P.O.A
208190	6.35	1/4"	0.8				P.O.A
	15.88	5/8"	1				P.O.A
208191	9.52	3/8"	0.8				P.O.A
	15.88	5/8"	1				P.O.A
208192	9.52	3/8"	0.8				P.O.A
	19.05	3/4"	1.15				P.O.A
208193	12.7	1/2"	0.8				P.O.A
	19.05	3/4"	1.15				P.O.A

## Pre-insulated Pair Coil Copper Tube R410A Rated



Cat. No.	Size		Outside Diameter	Coil Length	List Price \$ Exc. GST
	Outside Diameter: mm	Wall Thickness: mm			
208285	6.35	0.81	1/4"	20 Metre Coils	P.O.A
	9.52		3/8"		P.O.A
208286	6.35	0.81	1/4"		P.O.A
	12.7		1/2"		P.O.A
208287	6.35	0.81	1/4"		P.O.A
	15.88	1.02	5/8"		P.O.A
208288	9.52	0.81	3/8"		P.O.A
	15.88	1.02	5/8"		P.O.A
208289	9.52	0.81	3/8"		P.O.A
	19.05	1.22	3/4"		P.O.A

KEMBLA

## Kembla

### Soft Annealed Copper Tubing - Refrigeration Quality



Cat. No.	Size				Length	List Price \$ Exc. GST
	Outside Diameter: mm	Wall Thickness: mm	Outside Diameter	Wall Gauge		
208094	4.8	0.91*	3 <sup>16</sup> "	20	30 Metre Coils	P.O.A
208096	6.4	0.81*	1 <sup>4</sup> "	21		P.O.A
208095	7.9		5 <sup>16</sup> "			P.O.A
208097	9.5		3 <sup>8</sup> "		18 Metre Coils	P.O.A
208098	12.7		1 <sup>2</sup> "			P.O.A
208099	15.9	0.91	5 <sup>8</sup> "	20		P.O.A
208102		1.02*		19		P.O.A
208100	19.1	0.91	3 <sup>4</sup> "	20		P.O.A
208103		1.14*				P.O.A
208089	22.2	0.91	7 <sup>8</sup> "	20		P.O.A

\* Suitable for R410A refrigerants.

All Refrigeration Copper Tube is supplied in accordance with Australian Standard AS/NZS 1571

Note: The values as shown can only be considered as approximate as stocks are drawn both local and overseas sources. Price of copper tubing is constantly changing due to variations in our suppliers base price. Prices of tubing therefore can only be quoted as at date of delivery.



global brands - local service

www.actrol.com.au

**ACTROL**

Subject to change without notice

116

Section 3

© 2015 Actrol Parts Pty Ltd ABN: 93 142 654 564

# Copper Tubing



## Kembla

### Hard Drawn Copper Tube - Refrigeration Quality



Cat. No.	Size				Tube Length	List Price \$ Exc. GST
	Outside Diameter: mm	Wall Thickness: mm	Outside Diameter	Wall Gauge		
208106	6.4	0.81*	1¼"	21	6 Metre Lengths	P.O.A
208108	9.5		3⅝"			P.O.A
208110	12.7		1½"			P.O.A
208112	15.9	0.91	5⅝"	20		P.O.A
208111		1.02*		19		P.O.A
208114	19.1	0.91	¾"	20		P.O.A
208153		1.14*		18.5		P.O.A
208116	22.2	0.91	7⅝"	20		P.O.A
208115		1.22		18		P.O.A
208128		1.40*		17		P.O.A
208118	25.4	0.91	1"	20		P.O.A
208117		1.22		18		P.O.A
208150		1.63*		16		P.O.A
208120	28.6	0.91	1 ⅛"	20		P.O.A
208119		1.22		18		P.O.A
208090		1.63		16		P.O.A
208129		1.83*		15		P.O.A
208122	31.8	0.91	1 ¼"	20		P.O.A
208121		1.22		18		P.O.A
208151		2.03*		14		P.O.A
208126	34.9	0.91	1 ⅜"	20		P.O.A
208125		1.22		18		P.O.A
208130		2.03*		14		P.O.A
208124	38.1	0.91	1 ½"	20		P.O.A
208123		1.22		18		P.O.A
208152	41.3	0.91	1 ⅝"	20		P.O.A
208127		1.22		18		P.O.A
208132		1.63		16		P.O.A
208131		2.41*		12.5		P.O.A
208134	50.8	0.91	2"	20		P.O.A
208133		1.22		18		P.O.A
208137	54	0.91	2 ⅛"	20		P.O.A
208136		1.22		18		P.O.A
208135		1.6		16		P.O.A
208139	63.5	1.22	2 ½"	18		P.O.A
208148	66.7		2 ⅝"	18		P.O.A
208147		1.6		16		P.O.A
208149		2.03		14		P.O.A
208157	76.2	1.63	3"	16	P.O.A	
208159	101.6	1.63	4"		P.O.A	

\* Suitable for most R410A refrigerant applications.

All Refrigeration Copper Tube is supplied in accordance with Australian Standard AS/NZS 1571

Note: The values as shown can only be considered as approximate as stocks are drawn both local and overseas sources. Price of copper tubing is constantly changing due to variations in our suppliers base price. Prices of tubing therefore can only be quoted as at date of delivery.



global brands - local service

[www.actrol.com.au](http://www.actrol.com.au)

**ACTROL**

Subject to change without notice

117

Section 3

© 2015 Actrol Parts Pty Ltd ABN: 93 142 654 564



# Flexible Lines

**Burgaflex**  
AIR FLEXIBLE



## Burgaflex

Burgaflex hose with Burgaclick fittings is the most reliable, durable and extensive refrigerant hose clip system for commercial, automotive and transport air conditioning and refrigeration.

Burgaclick hose fitting technology delivers a superior connection solution for multiple refrigerants such as: R134a, R404A, R410A, R22, Suva MP52 and HFO1234yf. Reduces leakage and permeation - Foolproof and quick assembly of hose fittings with the break-through Burgaclick technology. Manufactured to stringent industry standards by a company with years of experience and testing – nobody knows air conditioning hoses and fittings better than the people at Burgaflex.

## Hoses

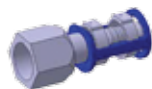


Cat. No.	Part No.	Description	Suits Fitting Size	Roll Length: m	List Price \$ Exc. GST
816028	ACT-002	Burgaflex Hose for 1/4" Fittings 15m Roll	1/4"	3	\$68.28
816030	3090-06	Burgaflex Hose for 3/8" Fittings 15m Roll	3/8"	15	\$270.70
816031	3090-08	Burgaflex Hose for 1/2" Fittings 15m Roll	1/2"	15	\$299.28
816032	3090-10	Burgaflex Hose for 5/8" Fittings 15m Roll	5/8"	15	\$311.38
816033	3090-12	Burgaflex Hose for 3/4" Fittings 15m Roll	3/4"	15	\$370.95

## Fitting Kits

Cat. No.	Part No.	Description	Kit Contents	Suits Fitting Size	List Price \$ Exc. GST
816038	ACT-001	1/4" Female Flare Burgaclick Fitting Kit	2 x straight 2 x 90 degree angle	1/4"	\$171.92

## Straight Fittings



Cat. No.	Part No.	Description	Suits Fitting Size	List Price \$ Exc. GST
816040	54701-06-06S-K	3/8" Female Flare Straight Burgaclick Fitting	3/8"	\$41.58
816041	54701-08-08S-K	1/2" Female Flare Straight Burgaclick Fitting	1/2"	\$50.88
816042	54701-10-10S-K	5/8" Female Flare Straight Burgaclick Fitting	5/8"	\$52.47
816043	54701-12-12S-K	3/4" Female Flare Straight Burgaclick Fitting	3/4"	\$52.47

## Angle Fittings



Cat. No.	Part No.	Description	Suits Fitting Size	List Price \$ Exc. GST
816050	54703-06-06S-K	3/8" Female Flare 90 Degree Angle Burgaclick Fitting	3/8"	\$42.94
816051	54703-08-08S-K	1/2" Female Flare 90 Degree Angle Burgaclick Fitting	1/2"	\$52.56
816052	54703-10-10S-K	5/8" Female Flare 90 Degree Angle Burgaclick Fitting	5/8"	\$56.50
816053	54703-12-12S-K	3/4" Female Flare 90 Degree Angle Burgaclick Fitting	3/4"	\$59.24

## Pliers



Cat. No.	Part No.	Description	List Price \$ Exc. GST
354595	8766	Burgaclick Pliers	\$304.40



**global brands - local service**

[www.actrol.com.au](http://www.actrol.com.au)

**ACTROL**

Subject to change without notice

118

Section 3

© 2015 Actrol Parts Pty Ltd ABN: 93 142 654 564

# INSTALL SAFETY.

## FIRE RETARDANT PAIR COIL

**Kühlpair®  
Copper**

**NEW**

**Kühlpair®  
Aluminium**



Complies with  
BCA Fire  
Hazard Properties



Pipe chase  
tested  
NFPA® 274



AS/NZS 4859  
compliant  
insulation



AS/NZS 1677  
certified  
system



AS/NZS 1571  
copper  
tube



Armaflex®  
Tuffcoat  
protective skin



Reflok®  
fitting  
system



Dedicated web  
support  
kuhlpair.com.au



Automotive  
grade aluminium  
alloy



Australian  
made  
insulation

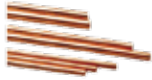
**Armaflex®**  
**Kühlpair**

**KEY**

# Capillary Tubing

## Key

### Capillary Tubing Service Packs



Cat. No.	Part No.	Inside Diameter		Length: mm	List Price \$ Exc. GST
		mm	Inches		
208160	SP-1	0.66	0.026	3660	\$33.32
208161	SP-2	0.8	0.0315		\$33.32
208162	SP-3	0.9	0.0335		\$33.30
208163	SP-4	1.1	0.0435	4270	\$33.30
208171	SP-4.5	1.2	0.0472		\$33.52
208164	SP-5	1.3	0.051		\$33.52

Cat. No.	Part No.	Inside Diameter		Length: mm	List Price \$ Exc. GST
		mm	Inches		
208165	SP-6	1.4	0.055	3660	\$33.52
208166	SP-7	1.62	0.064	3050	\$43.60
208167	SP-8	1.78	0.07	3660	\$43.84
208168	SP-9	1.9	0.075	2750	\$43.84
208169	SP-10	2.04	0.08	3050	\$43.84
208170	SP-11	2.24	0.088	3660	\$43.84

3



# Roof Flashing

## Aztec

### Pipe Flashing

Standard



Cat. No.	Part No.	Suit Pipe OD: mm	Base Size: mm	Compound	Temp. Range °C	List Price \$ Exc. GST
208473	MFSMIDDYB	0-50mm	100 x 100	Black EPDM	-55°C to 135°C	\$20.59
208474	MFS1B	6-70mm	115 x 115			\$22.73
208475	MFS2B	50-70mm	152 x 152			\$33.86
208476	MFS3B	6-146mm	203 x 203			\$37.86

Multiport



Cat. No.	Part No.	Suit Pipe OD: mm	Base Size: mm	Compound	Temp. Range °C	List Price \$ Exc. GST
208477	MFMPMINIB	1 port 0-49mm	115 x 115	Black EPDM	-55°C to 135°C	\$29.60
		2 ports 20mm				
		2 ports 10mm				

Retrofit



Cat. No.	Part No.	Suit Pipe OD: mm	Base Size: mm	Compound	Temp. Range °C	List Price \$ Exc. GST
208478	MFRF1B	19 to 69mm	160	Black EPDM	-55 to 135	\$69.89
208479	MFRF2B	50 to 184mm	273			\$139.81

**TOPHAT**

## Top Hat

### Roof Penetration Kit

Cat. No.	Part No.	Description	List Price \$ Exc. GST
208274	RF-PN-65	65mm Roof Penetration Kit	\$78.25
208275	TTRF-PN-65	65mm Roof Penetration Kit Twin Entry	\$88.42



global brands - local service

Subject to change without notice

www.actrol.com.au

**ACTROL**

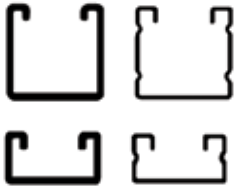
© 2015 Actrol Parts Pty Ltd ABN: 93 142 654 564

# Pipe Supports

**BBJ**  
ENGINEERING LTD

**BBJ**

## Channels - Slotted



Cat. No.	Part No.	Nom Section Dim: mm	Thickness: mm	Material	Length	List Price \$ Exc. GST
209250	PE1000SH2	41 x 41	2.5	HDG	2	\$74.65
209251	PE3300SH2	41 x 21				\$65.18
209252	PE2000SG2	41 x 41	1.6	GB		\$54.68
209253	PE4000SG2	41 x 21				\$48.12

\*HDG = Hot Dipped Galvanised GB = Galvabond

## Rod, Fittings and Accessories



Cat. No.	Part No.	Description	Pack Qty	List Price \$ Exc. GST
209255	PTR10Z	M10 Threaded Rod Zinc Plated 3m	1	\$12.11
209256	PHN10Z	M10 Hex Nuts Zinc Plated	25	\$6.76
209257	PFW10Z	M10 Flat Washer Zinc Plated		\$5.06
209261	PLD10M	M10 x 40mm Masonry Anchor	4	\$8.81
209262	PEVMP10	M10 Wall Plate Hanger Vertical		\$16.58
209263	PECMP10	M10 Wall Plate Hanger Centre		\$16.58
209264	PEHMP10	M10 Wall Plate Hanger Horizontal		\$16.58
209265	PRC10Z	M10 Hex Nut Coupler	4	\$16.58
209258	PHS1040Z	Hex Screw M10 x 40mm Zinc Plated		\$3.93
209259	PE1008Z	Channel Nut With Spring M10 Zinc Plated		\$13.02
209260	PE2600	Isolation Strip	20m	\$158.38

## Stud Clips

Stud clips have a secure and lockable fastening mechanism, allowing quick and easy fixing with the simple fit and twist action. The unique ratchet design ensures that the clip remains closed when insulated pipe is squeezed against the wall of the clip. The clips are also easy to remove and relocate for maintenance.

### Features:

- Unique locking ratchet design

- Easy installation on M10 threaded rod
- Withstands temperatures from -40°C to +140°C



Cat. No.	Part No.	Description	Pipe OD	Pack Qty	List Price \$ Exc. GST	Cat. No.	Part No.	Description	Pipe OD	Pack Qty	List Price \$ Exc. GST
209220	B6814P	M10 Stud Clip	1/4"	5	\$18.02	209227	B6821P	M10 Stud Clip	1 1/8"	5	\$21.94
209221	B6816P		3/8"		\$18.02	209228	B6822P		1 1/4"	3	\$15.36
209222	B6815P		1/2"		\$18.97	209229	B6823P		1 3/8"		\$15.59
209223	B6817P		5/8"		\$18.97	209230	B6824P		1 1/2"		\$19.02
209224	B6818P		3/4"		\$19.97	209231	B6825P		1 5/8"		\$19.33
209225	B6819P		7/8"		\$19.97	209232	B6826P		2"		\$22.05
209226	B6820P		1"		\$21.94	209233	B6827P		2 1/8"		\$20.94

## Channel Clips

Channel clips have a secure and lockable fastening mechanism, allowing quick and easy fixing with the simple fit and twist action. The unique ratchet design ensures that the clip remains closed when insulated pipe is squeezed against the wall of the clip. The clips are also easy to remove and relocate for maintenance.

### Features:

- Unique locking ratchet design

- Easy installation in 41mm channels
- Withstands temperatures from -40°C to +140°C



Cat. No.	Part No.	Description	Pipe OD	Pack Qty	List Price \$ Exc. GST	Cat. No.	Part No.	Description	Pipe OD	Pack Qty	List Price \$ Exc. GST
209235	B6842P	Channel Clip	1/4"	5	\$20.94	209242	B6849P	Channel Clip	1 1/8"	5	\$31.95
209236	B6844P		3/8"		\$20.94	209243	B6850P		1 1/4"	3	\$21.58
209237	B6843P		1/2"		\$22.97	209244	B6851P		1 3/8"		\$22.77
209238	B6845P		5/8"		\$23.98	209245	B6852P		1 1/2"		\$25.18
209239	B6846P		3/4"		\$26.01	209246	B6853P		1 5/8"		\$27.58
209240	B6847P		7/8"		\$27.98	209247	B6854P		2"		\$31.19
209241	B6848P		1"		\$29.92	209248	B6855P		2 1/8"		\$30.01



**global brands - local service**

[www.actrol.com.au](http://www.actrol.com.au)

**ACTROL**

Subject to change without notice

121

Section 3

© 2015 Actrol Parts Pty Ltd ABN: 93 142 654 564



# Pipe Supports



**BBJ**

## Insulclamps

Insulclamps are a well known range of pipe clips, supporting individual pipes in a thermo-rubber cushion between 2 metal parts and can be used internally or externally.

### Features:

- Insulates against heat loss and reduces vibration
- Plastic inserts designed to withstand temperatures from -25°C to +125°C
- Quick to install with integral lock nuts
- All metal parts are zinc plated and colour passivated to resist corrosion

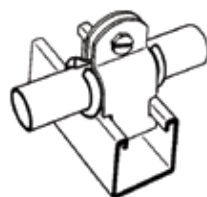


Cat. No.	Part No.	Pipe OD	Pack Qty	List Price \$ Exc. GST
209201	B6268P	1/4"	5	\$40.91
209202	B6274P	3/8"		\$41.87
209203	B6267P	1/2"	3	\$25.40
209204	B6276P	5/8"		\$26.46
209205	B6273P	3/4"		\$27.06
209206	B6277P	7/8"		\$27.61

Cat. No.	Part No.	Pipe OD	Pack Qty	List Price \$ Exc. GST
209207	B6264P	1 1/8"	2	\$20.98
209208	B6265P	1 3/8"		\$22.54
209209	B6266P	1 5/8"	1	\$27.06
209210	B6269P	2 1/8"		\$19.33
209211	B6270P	2 5/8"		\$27.61
209212	B6271P	3 1/8"		\$30.83

## Pipe Clamps

PE5 Pipe Clamps suit standard 41mm channels and are used to support all types of pipework, both insulated and uninsulated. Where PE5 pipe clamps are restraining uninsulated pipework subject to vibration, the use of Isolation Strip is recommended.



Cat. No.	Part No.	Pipe OD: mm	W x T: mm	Mass: kg	Thread	Pack Qty	List Price \$ Exc. GST
209501	PE5-11P	11	32 x 2.0	0.038	M6	5	\$16.35
209502	PE5-14P	14		0.042			\$16.62
209503	PE5-17P	17		0.046			\$17.33
209504	PE5-19P	19		0.048			\$17.44
209505	PE5-21P	21		0.052			\$17.58
209506	PE5-25P	25		0.056		3	\$18.51
209507	PE5-27P	27		0.060			\$13.08
209508	PE5-29P	29		0.062			\$13.20
209509	PE5-32P	32		0.066			\$14.14
209510	PE5-34P	34		0.068			\$14.27
209511	PE5-38P	38	32 x 2.5	0.074	M6	3	\$14.60
209512	PE5-43P	43		0.080			\$15.24
209513	PE5-48P	48		0.108		2	\$11.99
209514	PE5-51P	51		0.114			\$12.38
209515	PE5-54P	54		0.118			\$13.32
209516	PE5-57P	57		0.122			\$13.44
209517	PE5-60P	60		0.128			\$13.56
209518	PE5-64P	64		0.134			\$13.68
209519	PE5-67P	67		0.140			\$13.84
209520	PE5-70P	70		0.144			\$13.96
209521	PE5-73P	73		0.148			\$14.39
209522	PE5-76P	76		0.154			\$14.65
209523	PE5-79P	79		0.158			\$14.77
209524	PE5-83P	83		0.164			\$15.36
209525	PE5-86P	86		0.170			\$15.49
209526	PE5-89P	89		0.174			\$15.98

Cat. No.	Part No.	Pipe OD: mm	W x T: mm	Mass: kg	Thread	Pack Qty	List Price \$ Exc. GST
209527	PE5-92P	92	32 x 2.5	0.180	M6	2	\$16.17
209528	PE5-95P	95		0.184			\$16.23
209529	PE5-98P	98		0.190		1	\$10.15
209530	PE5-102P	102		0.202			\$10.28
209531	PE5-105P	105		0.206	\$10.40		
209532	PE5-108P	108		0.212	\$10.52		
209533	PE5-111P	111		0.216	\$11.11		
209534	PE5-114P	114		0.222	\$11.24		
209535	PE5-117P	117		0.226	\$11.41		
209536	PE5-121P	121		0.232	\$11.60		
209537	PE5-127P	127		0.242	\$11.74		
209538	PE5-133P	133		0.252	\$11.99		
209539	PE5-140P	140		0.264	\$12.93		
209540	PE5-146P	146		0.274	\$13.56		
209541	PE5-152P	152		0.282	\$13.68		
209542	PE5-160P	160		0.296	\$15.59		
209543	PE5-165P	165		0.304	\$15.84		
209544	PE5-171P	171		0.314	\$17.06		
209545	PE5-178P	178		0.324	\$17.18		
209546	PE5-191P	191		0.348	\$17.74		
209547	PE5-203P	203	0.366	\$18.51			
209548	PE5-216P	216	0.386	\$19.60			
209549	PE5-230P	230	0.400	\$19.90			
209550	PE5-241P	241	0.428	\$20.30			
209551	PE5-254P	254	0.448	\$21.06			



global brands - local service

www.actrol.com.au

**ACTROL**

Subject to change without notice



# Pipe Supports



**BBJ**

Griplocks



Cat. No.	Part No.	Description	Size	Suits Approx. Pipe Sizes (allowing for insulation)	Pack Qty.	List Price \$ Exc. GST
209215	B6186P	Griplock Pipe Clip	1	1/4" & 1/2"	4	\$21.76
209216	B6187P		2	3/8" & 5/8"	3	\$17.62
209217	B6188P		3	1/2" & 7/8"	3	\$18.27
209218	B6189P		4	5/8" & 1 1/8"	2	\$14.47

# Unit Brackets



**Rodigas**

Adjustable Brackets

## Features

- Quick assembly and installation
- Adjustable brackets to suit all applications
- Supplied with inbuilt level
- Supplied with mounting accessories



Cat. No.	Model No.	Description	Mounting Depth: mm	Max Bracket Spacing: mm	Load Rating: kg	List Price \$ Exc. GST
209160	MT650	A/C Bracket Adjustable Sloping Roof Kit	520	800	140	\$268.59
209162	MS230	A/C Bracket Adjustable Wall Mount Kit Powder Coated	420		100	\$71.38
209164	MS253		465		140	\$86.95
209163	MS257		550		200	\$105.08
209166	MS213		550		200	\$173.24
209165	MS263	A/C Bracket Adjustable Wall Mount Kit 304 Stainless Steel	420		140	\$251.84

## Galvanised Brackets

Supplied as a pair



Cat. No.	Part No.	Mounting Depth: mm	Load Rating: kg	List Price \$ Exc. GST
209167	MS102SCI	420	120	\$68.63
209168	MS110SCI	520	140	\$94.27
209169	MS107SCI	620	160	\$130.36



**Propipe**

Cantilever Bracket Kits - Hot Dipped Galvanised

Supplied with accessories - 4 x spring nuts, flat washers, bolts & 2 x end caps



Cat. No.	Part No.	Mounting Depth: mm	List Price \$ Exc. GST
209270	CB450	450	\$90.38
209271	CB600	600	\$103.51
209272	CB750	750	\$123.23



global brands - local service

www.actrol.com.au

**ACTROL**

Subject to change without notice

123

Section 3

© 2015 Actrol Parts Pty Ltd ABN: 93 142 654 564

# Pipe Supports



## Thermaloc

### Insulated Pipe Supports



Thermaloc is light weight and extremely tough insulated pipe support system. Just place the two pieces over the pipe and squeeze together gently. They are quick and easy to use and provide a flat surface to butt insulation against allowing a tight and secure joint. Use with standard pipe clips and channels (sold separately)

#### Features

- Made from recycled material and is recyclable
- Profile ensures an airtight finish
- Decreases installation time as it locks easily together
- Made of high density PE foam
- Closed cell so that it will not absorb moisture or degrade with time
- Will not erode with pipe movement
- AS1530.3 compliant foil faced

ID		25mm Wall			List Price \$ Exc. GST	30mm Wall			List Price \$ Exc. GST	40mm Wall			List Price \$ Exc. GST	50mm Wall			List Price \$ Exc. GST
mm	Inch	Cat. No.	OD	R Value		Cat. No.	OD	R Value		Cat. No.	OD	R Value		Cat. No.	OD	R Value	
6	1/4"	209350	56	1.04	\$9.27												
10	3/8"	209351	60	0.9	\$9.82												
13	1/2"	209352	63	0.83	\$9.17	209380	73	1.05	\$10.89	209407	93	1.52	\$14.84				
16	5/8"	209353	66	0.78	\$9.95	209381	76	0.99	\$11.66	209408	96	1.43	\$14.84				
20	3/4"	209354	70	0.73	\$10.43	209382	80	0.92	\$12.04	209409	100	1.34	\$14.84	209435	120	1.79	209435
22	7/8"	209355	72	0.71	\$10.68	209383	82	0.9	\$12.28	209410	102	1.3	\$15.74	209436	122	1.74	209436
25	1"	209356	75	0.69	\$10.97	209384	85	0.87	\$13.69	209411	105	1.26	\$16.69	209437	125	1.68	209437
27	1 1/8"	209357	77	0.67	\$11.45	209385	87	0.85	\$13.88	209412	107	1.23	\$18.54	209438	127	1.64	209438
32	1 1/4"	209358	82	0.64	\$12.66	209386	92	0.81	\$14.51	209413	112	1.17	\$19.03	209439	132	1.56	209439
34	1 3/8"	209359	84	0.63	\$12.66	209387	94	0.8	\$15.01	209414	114	1.15	\$19.03	209440	134	1.53	209440
38	1 1/2"	209360	88	0.62	\$14.91	209388	98	0.77	\$15.44	209415	118	1.11	\$19.03	209441	138	1.48	209441
42	1 5/8"	209361	92	0.6	\$15.39	209389	102	0.75	\$15.82	209416	122	1.08	\$19.07	209442	142	1.44	209442
48	1 7/8"	209362	98	0.58	\$15.82	209390	108	0.73	\$16.85	209417	128	1.05	\$21.80	209443	148	1.39	209443
51	2"	209363	101	0.58	\$17.87	209391	111	0.72	\$12.04	209418	131	1.03	\$21.85	209444	151	1.37	209444
54	2 1/8"	209364	104	0.57	\$18.93	209392	114	0.71	\$17.82	209419	134	1.01	\$21.85	209445	154	1.34	209445
60	2 3/8"	209365	110	0.56	\$19.94	209393	120	0.69	\$18.98	209420	140	0.99	\$23.59	209446	160	1.31	209446
64	2 1/2"	209366	114	0.55	\$22.78	209394	124	0.68	\$20.14	209421	144	0.97	\$25.39	209447	164	1.29	209447
67	2 5/8"	209367	117	0.54	\$23.06	209395	127	0.68	\$21.46	209422	147	0.96	\$25.44	209448	167	1.27	209448
76	3"	209368	126	0.53	\$23.40	209396	136	0.66	\$22.96	209423	156	0.93	\$29.90	209449	176	1.23	209449
89	3 1/2"	209369	139	0.52	\$24.13	209397	149	0.64	\$24.75	209424	169	0.9	\$32.72	209450	189	1.19	209450
102	4"	209370	152	0.51	\$32.64	209398	162	0.62	\$28.93	209425	182	0.88	\$35.89	209451	202	1.15	209451
115	4 1/2"		165	0.5	P.O.A		175	0.61	P.O.A		195	0.86	P.O.A	209452	215	1.12	\$49.13
127	5"		177	0.49	P.O.A		187	0.6	P.O.A		207	0.84	P.O.A	209453	227	1.1	\$55.01
140	5 1/2"		190	0.48	P.O.A		200	0.59	P.O.A		220	0.83	P.O.A	209454	240	1.08	\$60.68
152	6"		202	0.48	P.O.A		212	0.59	P.O.A		232	0.82	P.O.A		252	1.06	P.O.A
168	6 1/2"		218	0.47	P.O.A		228	0.58	P.O.A		248	0.8	P.O.A		268	1.04	P.O.A
204	8"		254	0.46	P.O.A		264	0.57	P.O.A		284	0.78	P.O.A		304	1.01	P.O.A



global brands - local service

www.actrol.com.au

**ACTROL**

Subject to change without notice

124

Section 3

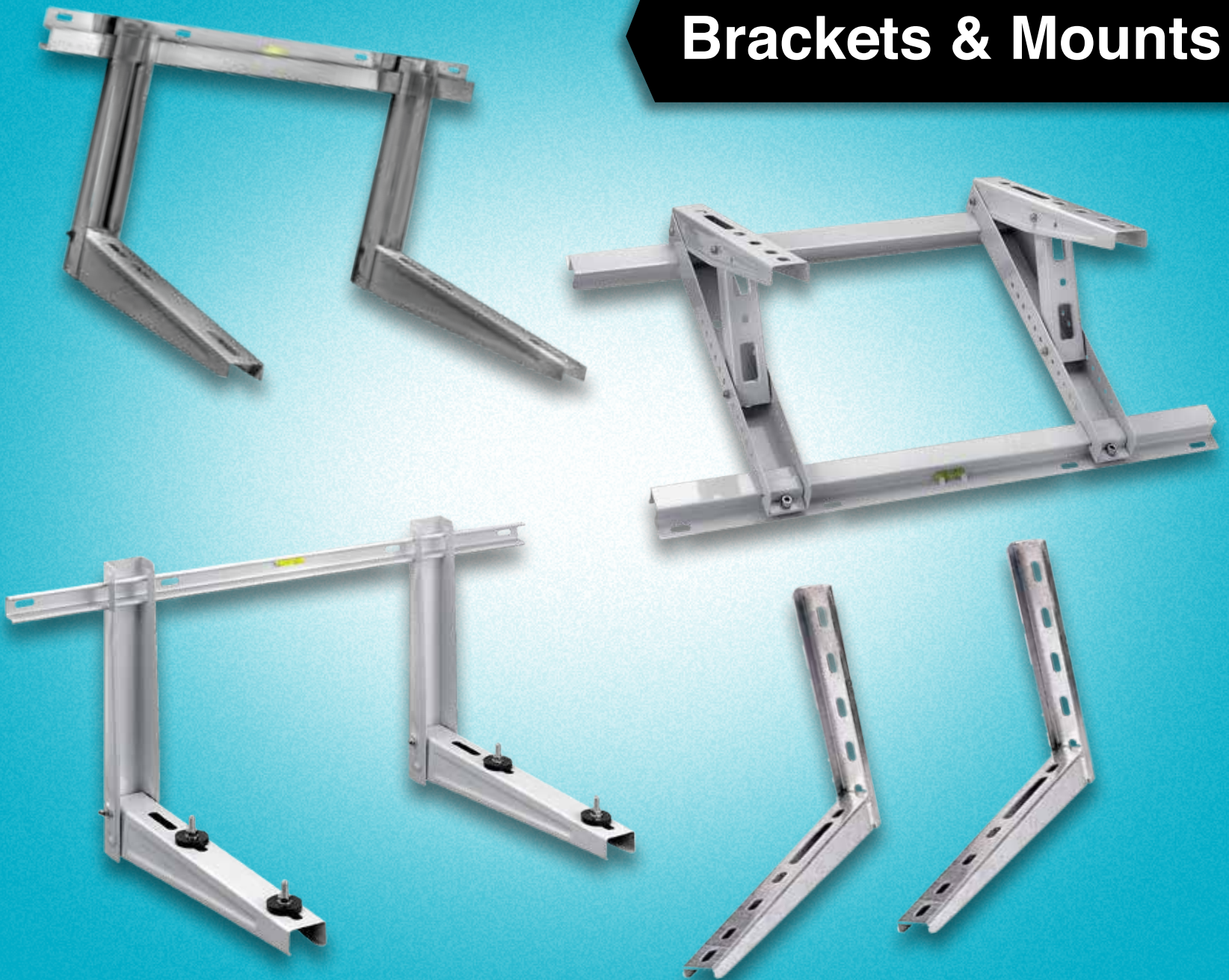
© 2015 Actrol Parts Pty Ltd ABN: 93 142 654 564



**Actrol is...**  
*Rodigas*



## Brackets & Mounts



**actrol.com.au**

***ACTROL***





## Unit Mounts

### Polyslab

Polyslab is made from an extremely tough composite material with added UV protection and eliminates the need for bulky, dirty and unsightly products. Polyslab provides a lighter, safer alternative to dangerously heavy pre-cast concrete products including slabs and pavers. Rather, it offers a light, rigid and smooth-edge design.

#### Features

- Used for air conditioners, refrigeration units & hot water systems & more
- Quick and easy to install
- Light weight design
- Stackable – saves space
- Clean and non-abrasive (no cuts, dust or damage)
- Resists cracking or chipping



Cat. No.	Part No.	Size: mm	Max Load	Pack Size	List Price \$ Exc. GST	Cat. No.	Part No.	Size: mm	Max Load	List Price \$ Exc. GST
209080	PSAC	885 x 465	160kg	1	\$54.29	209078	PSAC-SML	639 x 339	120kg	\$48.44
209085	PSACMED-BB50			50	\$2,048.01	209082	PSAC-LGE	1130 x 650	160kg	\$84.94
209086	PSACMED-BB100			100	\$3,813.50	209084	PSHWS	650 x 650	500kg	\$44.89

### Evo-Crete Mounting Blocks

Evo-Crete is Fibre Reinforced Cellular Concrete which creates a dynamic cellular structure with fibre reinforcing to provide extreme strength and durability



Cat. No.	Part No.	Block Dimensions: mm	Kit Contents	List Price \$ Exc. GST
209076	EVO-ACB	450 x 80 x 110	2 x Evo-Crete Blocks 4 x Rubber Vibration Mounts 4 x Evo-Crete Screws & Washers	\$38.73

### Rubber Mounts

Supplied in sets of 4, rubber mounts are easily fixed to the mounting holes of an air conditioners out door unit using the integral stud and nut supplied.



Cat. No.	Part No.	Size: mm	List Price \$ Exc. GST	Cat. No.	Part No.	Size: mm	List Price \$ Exc. GST
209180	VM1	1" Small	\$20.20	209184	VM3	3" Medium	\$26.98
209182	WM2	2" Small	\$23.48	209186	VM4	4" Large	\$31.48

## Actrol Website Responsive Design

A new layout that  
adjusts to your device.



[actrol.com.au](http://actrol.com.au)

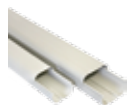
**ACTROL**

# Pipe Duct

## Pacific

Interchangeable with most types of Japanese duct and fittings

### Duct



Cat. No.	Part No.	Description	Size: mm	Carton Quantity	Pallet Quantity	List Price \$ Exc. GST
208501	PSD7	2m Pipe Duct	75	5	245	\$44.27
208502	PSD10	2m Pipe Duct	100	5	180	\$70.87

### Wall Inlets



Cat. No.	Part No.	Description	Size: mm	Carton Quantity: Inner	Carton Quantity: Outer	List Price \$ Exc. GST
208504	PSW7	Wall Inlet	75	10	60	\$19.91
208505	PSW10	Wall Inlet	100	10	40	\$35.42

### 90 Degree Flat Elbows



Cat. No.	Part No.	Description	Size: mm	Carton Quantity: Inner	Carton Quantity: Outer	List Price \$ Exc. GST
208510	PSK7	90 Degree Flat Elbow	75	10	60	\$20.38
208511	PSK10	90 Degree Flat Elbow	100	10	40	\$35.42

### 45 Degree Flat Elbows



Cat. No.	Part No.	Description	Size: mm	Carton Quantity: Inner	Carton Quantity: Outer	List Price \$ Exc. GST
208515	PSKF7	45 Degree Flat Elbow	75	1	60	\$16.94
208516	PSKF10	45 Degree Flat Elbow	100	1	40	\$26.58

### 90 Degree Corner Elbows



Cat. No.	Part No.	Description	Size: mm	Carton Quantity: Inner	Carton Quantity: Outer	List Price \$ Exc. GST
208513	PSC7	90 Degree Corner Elbow	75	10	60	\$20.38
208514	PSC10	90 Degree Corner Elbow	100	10	40	\$35.42

### Ceiling Plates



Cat. No.	Part No.	Description	Size: mm	Carton Quantity: Inner	Carton Quantity: Outer	List Price \$ Exc. GST
208507	PSP7	Ceiling Plate	75	10	60	\$21.24
208508	PSP10	Ceiling Plate	100	10	40	\$26.58

### End Covers



Cat. No.	Part No.	Description	Size: mm	Carton Quantity: Inner	Carton Quantity: Outer	List Price \$ Exc. GST
208520	PSE7	End Cover	75	10	60	\$19.39
208521	PSE10	End Cover	100	10	40	\$23.24

### Joiners



Cat. No.	Part No.	Description	Size: mm	Carton Quantity: Inner	Carton Quantity: Outer	List Price \$ Exc. GST
208525	PSJ7	Duct Joiner	75	10	60	\$9.95
208526	PSJ10	Duct Joiner	100	10	N/A	\$13.30

### Flexible Joint



Cat. No.	Part No.	Description	Size: mm	Carton Quantity: Inner	Carton Quantity: Outer	List Price \$ Exc. GST
208517	PSF75	500mm Flexible Joint	75	20	60	\$28.75
208518	PSF710	1000mm Flexible Joint	75	20	N/A	\$50.89
208522	PSF108	800mm Flexible Joint	100	20		\$66.41

### Reducer



Cat. No.	Part No.	Description	Size: mm	Carton Quantity: Inner	List Price \$ Exc. GST
208519	PSDR107	Reducer	75 to 100	10	\$19.39

### Tee



Cat. No.	Part No.	Description	Size: mm	Carton Quantity: Inner	Carton Quantity: Outer	List Price \$ Exc. GST
208523	PST10	Tee	100	5	20	\$88.56



global brands - local service

www.actrol.com.au

**ACTROL**

Subject to change without notice

127

Section 3

© 2015 Actrol Parts Pty Ltd ABN: 93 142 654 564

3



# Pipe Duct

smartDUCT

## Smartduct

### Features

- UV Resistant
- Minimum effort for maximum impact
- Long Lasting
- Available in 2 widths - 80mm and 110mm
- Fast to install
- Cost efficient
- Suitable for temperatures from -20°C to 60°C



### 80mm

Cat. No.	Part No.	Description	List Price \$ Exc. GST
208702	0812-BC	Straight 2m Duct	\$45.53
208708	0812-GC	Cover Join	\$6.81
208714	0812-A1	Internal Corner	\$13.73
208715	0820-IR	Internal Corner Adj. 80° to 105°	\$20.60
208720	0806-AE	External Corner	\$16.05
208721	0821-ER	External Corner Adj. 70° to 120°	\$20.60
208726	0807-CP	Plane Curve	\$14.23
208727	0822-PR	Plane Curve Adj. 65° to 130°	\$22.46
208732	0809-CM	Corner Wall Elbow	\$16.14
208792	0814-VS	Left Vertical Angle	\$25.53
208794	0815-VD	Right Vertical Angle	\$25.53
208738	0808-TT	End Cap	\$9.91
208742	0810-PM	Wall Passage	\$12.39
208746	0811-GF	Flexible Joint	\$20.90
208748	0813-DT	"T" Shunt	\$43.57
208758	0803-ST	Fast Block	\$1.25

### 110mm

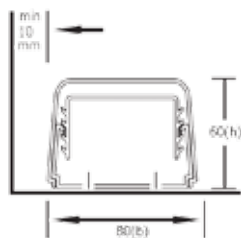
Cat. No.	Part No.	Description	List Price \$ Exc. GST
208704	1212-BC	Straight 2m Duct	\$58.65
208710	1204-GC	Cover Joint	\$7.74
208716	1205-AI	Internal Corner	\$23.04
208722	1206-AE	External Corner	\$23.04
208728	1207-CP	Plane Curve	\$24.70
208734	1209-CM	Corner Wall Elbow	\$26.75
208743	1210-PM	Wall Passage	\$16.46
208750	1213-DT	"T" Shunt	\$54.48
208754	1280-RI	Reduction 110mm to 80mm	\$10.59
208760	1203-ST	Fast Block	\$1.39

### Accessories

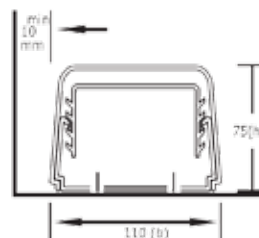
208762	0341-TS	Cap for Floor Support	\$5.14
208770	0016-TU	Drain Pipe 16mm	\$3.05
208772	1000-SP	Drain "Y" Joint	\$2.68
208764	0350-SP	Floor Support 350mm	\$13.93
208766	0450-SP	Floor Support 450mm	\$16.07
208768	1000-SP	Floor Support 1000mm	\$32.04

### Technical Data: mm

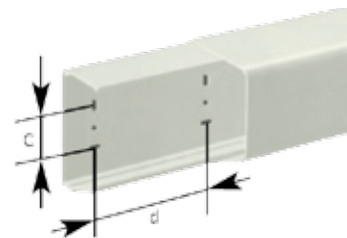
#### Type 08



#### Type 12



#### Fixing Holes



Type	Code	Dimensions: mm			
		b	h	c	d
08	0812 BC	80	60	50	200
12	1212 BC	110	75	80	200



global brands - local service

Subject to change without notice

128

Section 3

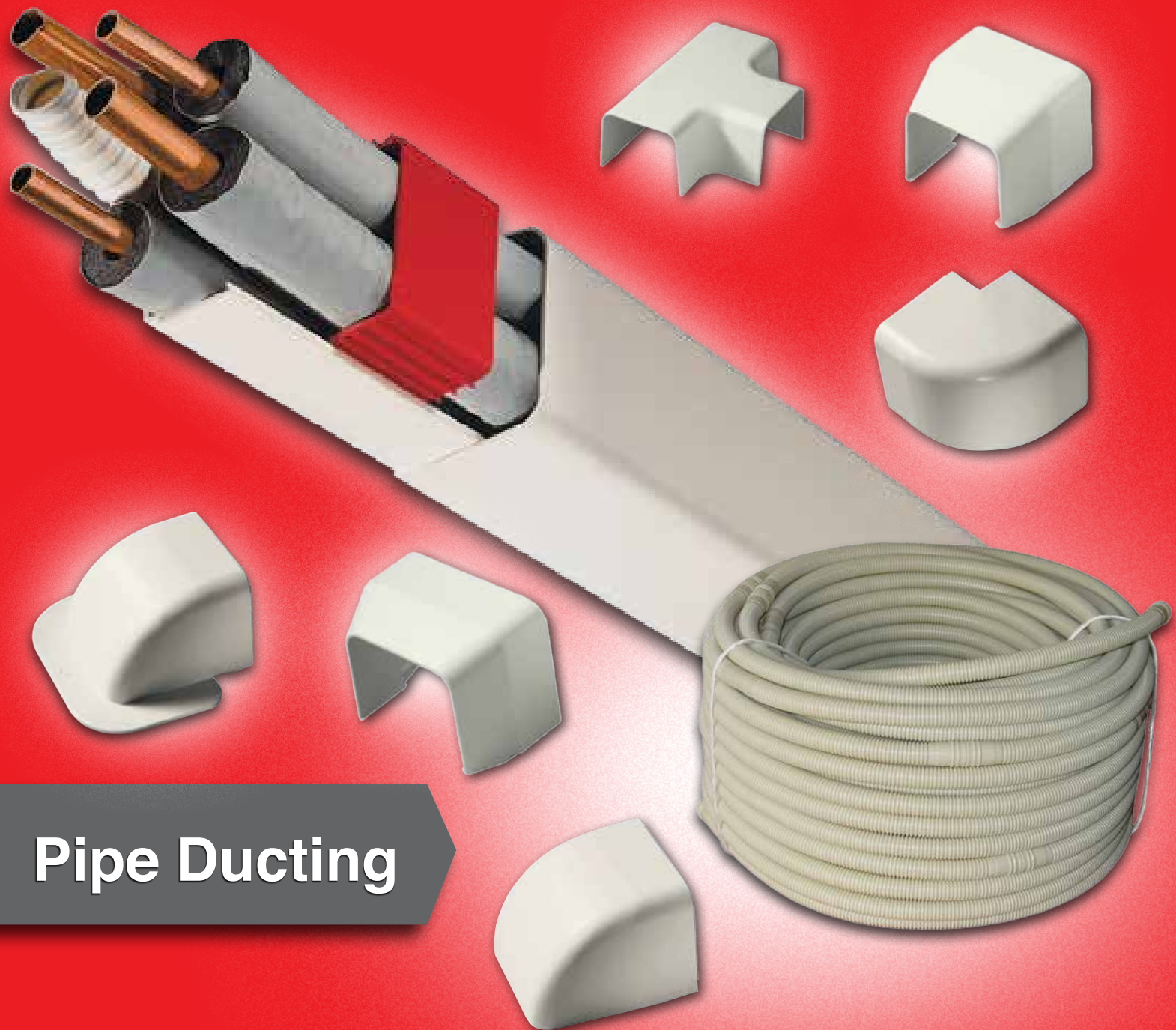
www.actrol.com.au

**ACTROL**

© 2015 Actrol Parts Pty Ltd ABN: 93 142 654 564

**Actrol is...**  
*Smartduct*

smartDUCT™



**Pipe Ducting**

**actrol.com.au**

**ACTROL**

# PVC Plastic Pipe and Fittings



## ProPipe

PVC Pipe



Cat. No.	Part No.	Diameter: mm	Length: Mtrs	Pack Qty	List Price \$ Exc. GST
208815	15XDP21	15	2.1	10	\$48.43
208816	20XDP21	20			\$76.27
208830	15XCE	15	3.9	1	\$9.73
208831	20XCE	20			\$15.58
208832	25XCE	25			\$23.31

Drain Pan Adaptor



Cat. No.	Part No.	Diameter: mm	List Price \$ Exc. GST
208872	2114015NS	15	\$4.39

## Fittings

90° Elbows



Cat. No.	Part No.	Diameter: mm	List Price \$ Exc. GST
208833	2103015	15	\$1.68
208834	2103020	20	\$2.37
208835	2103025	25	\$3.71

45° Elbows



Cat. No.	Part No.	Diameter: mm	List Price \$ Exc. GST
208836	2117015	15	\$2.17
208837	2117020	20	\$4.72
208838	2117025	25	\$5.56

Tees



Cat. No.	Part No.	Diameter: mm	List Price \$ Exc. GST
208839	2106015	15	\$2.17
208840	2106020	20	\$2.78
208841	2106025	25	\$5.56

Double End Socket



Cat. No.	Part No.	Diameter: mm	List Price \$ Exc. GST
208842	2108015	15	\$0.93
208843	2108020	20	\$1.54
208844	2108025	25	\$2.93

Reducing Socket



Cat. No.	Part No.	Diameter: mm	Diameter: mm	List Price \$ Exc. GST
208845	2109020015	20	15	\$2.62
208846	2109025015	25		\$3.71
208847	2109025020		20	\$5.40

Reducing Bush



Cat. No.	Part No.	Diameter: mm	Diameter: mm	List Price \$ Exc. GST
208848	2110020015	20	15	\$1.09
208849	2110020020	25		\$2.69
208850	2110020025		20	\$2.86



global brands - local service

[www.actrol.com.au](http://www.actrol.com.au)

**ACTROL**

Subject to change without notice

130

Section 3

© 2015 Actrol Parts Pty Ltd ABN: 93 142 654 564



# PVC Plastic Pipe and Fittings



## ProPipe

### Fittings

#### Pig Tail



Cat. No.	Part No.	Diameter: mm	Description	List Price \$ Exc. GST
208875	PIG15	15	Pig Tail Adaptor	\$9.13

#### PVC Solvent Cement (Clear)



Cat. No.	Part No.	Size: grams	List Price \$ Exc. GST
208818	NO70100	100	\$7.42
208819	NO70500	500	\$22.22

#### Male Socket



Cat. No.	Part No.	Diameter: mm	List Price \$ Exc. GST
208851	2112015	15	\$1.85
208852	2112020	20	\$2.02
208853	2112025	25	\$2.86

#### P/T Female Socket



Cat. No.	Part No.	Diameter: mm	List Price \$ Exc. GST
208854	2111015	15	\$1.85
208855	2111020	20	\$2.54
208856	2111025	25	\$3.18

#### Barrel Unions



Cat. No.	Part No.	Diameter: mm	List Price \$ Exc. GST
208865	2122015	15	\$14.81
208866	2122020	20	\$15.67
208867	2122025	25	\$16.66

#### Red Cap



Cat. No.	Part No.	Description	Size: mm	List Price \$ Exc. GST
208857	REDCAP	Red Cap	20	\$8.82

### Pipe Fixings

#### Full Pipe Saddle (White)



Cat. No.	Part No.	Diameter: mm	List Price \$ Exc. GST
208827	PPS08	15	\$1.25
208828	PPS106	20	\$1.33
208829	PPS143	25	\$1.45

#### Single Sided Saddle (Zinc)



Cat. No.	Part No.	Pipe Diam: mm	List Price \$ Exc. GST
208858	ZPC075	15	\$0.36
208859	ZPC100	20	\$0.51

#### Stand Off Bracket (White)



Cat. No.	Part No.	Diameter: mm	List Price \$ Exc. GST
208860	PPSB075	15	\$9.17
208861	PPSB100	20	\$9.66
208862	PPSB125	25	\$9.73



global brands - local service

www.actrol.com.au

**ACTROL**

Subject to change without notice

131

Section 3

© 2015 Actrol Parts Pty Ltd ABN: 93 142 654 564

# Condensate Traps and Accessories

PRO PIPE SUPPLIES  
PTY LTD

smartDUCT

## Propipe & Smartduct

### Clear Flexible PVC Tubing

Ideal for use with condensate pumps.

Cat. No.	Part No.	Size: mm	Roll Size: m	List Price \$ Exc. GST
208200	4188504	6	30	\$4.19
208201	4188805	10		\$4.64

### Flexible Drain Pipe

Flexible drain pipe is particularly ideal for use in domestic air conditioning condensate drain applications.

Cat. No.	Part No.	Description	Brand	List Price \$ Exc. GST
208770	0016-TU	Flexible Drain 16mm x 30m	Smartduct	\$3.05
208870	FDPI19	Insulated Flexible Drain 19mm x 20m	Propipe	\$210.42

### Drain Tube Adaptors

Drain Tube Adaptors enable easy transition from clear PVC tubing to larger diameter rigid PVC or flexible drain pipe.

Cat. No.	Part No.	Description	Size: mm	Pack Qty	List Price \$ Exc. GST
208868	CPK6	Drain Tube Adaptor Kit	6 to 15/20	1	\$16.35
208869	CPK10	Drain Tube Adaptor Kit	10 to 15/20		\$16.75

### Hose Clamps

Stainless steel hose clamps are ideal to use with flexible condensate pipe to ensure a long lasting tight fit.

Cat. No.	Part No.	Description	Size: mm	List Price \$ Exc. GST
208877	HC1016	Stainless Steel Hose Clamp	10 to 16	\$6.08
208878	HC1625		16 to 25	\$6.85
208879	HC2335		23 to 35	\$7.89

## EZTrap Condensate Traps

### Clear J Trap

A very versatile trap which can be used to make any angle condensate trap using 20mm ProPipe PVC fittings to suit your required needs. Due to its clear construction any blockage or obstruction can be visibly seen.

Cat. No.	Part No.	Description	Size: mm	List Price \$ Exc. GST
208826	JTRAP	Clear J Trap	20	\$21.23

### Waterless Trap

A waterless condensate trap for negative or positive pressure systems up to 18.5 kPa and 10L/min. Prevents airflow in either direction while allowing unimpeded flow of condensate water.

Cat. No.	Part No.	Description	Size: mm	List Price \$ Exc. GST
208823	EZT150	Waterless Trap	20 or 25	\$95.45

### Clear Trap

Cleanable condensate J trap for ducted air conditioners. With a visible construction and fitted with watertight caps, it's easy to open for cleaning if required.

Cat. No.	Part No.	Description	Size: mm	List Price \$ Exc. GST
208820	EZT113	Clear Cross Trap	20	\$45.96

### Overflow Switch

An overflow switch should be used to prevent expensive water damage in case a condensate drain becomes blocked. Suitable for vertical or horizontal installation configurations, they are easily installed and are complete with NO/NC contacts to control unit shut down and signal an alarm.

Cat. No.	Part No.	Description	Size: mm	List Price \$ Exc. GST
208821	EZT225	Overflow Switch	20 or 25	\$116.67

### Flexible Brush

Allows easy cleaning of condensate traps in seconds.

Cat. No.	Part No.	Description	List Price \$ Exc. GST
208825	EZT406	Flexible Brush	\$14.13

global brands - local service

www.actrol.com.au

**ACTROL**

Subject to change without notice

132

Section 3

© 2015 Actrol Parts Pty Ltd ABN: 93 142 654 564



## Vibration Eliminators



### Castel

Vibration Eliminators are flexible metal connectors available in standard sizes to fit copper tube. They are designed for installation in air conditioning and refrigeration piping to minimise transmission of vibration from the compressor to other parts of the system.



Cat. No.	Part No.	Size	Max. Working Press. kPa	List Price \$ Exc. GST
209020	7690/3	3/8"	3500	\$64.32
209021	7690/4	1/2"		\$72.50
209022	7690/5	5/8"		\$78.58
209023	7690/6	3/4"		\$94.89
209024	7690/7	7/8"		\$118.64
209025	7690/9	1 1/8"	3500	\$141.90
209026	7690/11	1 3/8"		\$238.20
209027	7690/13	1 5/8"		\$332.18
209028	7690/17	2 1/8"		\$504.82
209029	7690/21	2 5/8"	2500	\$1,117.46
209031	7690/25	3 1/8"		\$1,290.03

3



FOLLOW US ON

facebook.



[www.facebook.com/ActrolParts](http://www.facebook.com/ActrolParts)

# Flexible Insulation

**SuperlonFR.**

## Superlon FR

### Pipe & Sheet Insulation – Fire Rated

#### Technical Data

<b>Material</b>	Foamed nitrile rubber	
<b>Manufactured by</b>	Armacell Australia Pty. Ltd.	
<b>Temperature range</b>	-50°C to +105°C	
<b>Water Vapour Permeability</b>	u > 4,500	Tested according to ASTM E96
<b>Water Absorption</b>	0.2% by volume	Tested according to ASTM C209
<b>Temperature conductivity K-value</b>	At 0°C 0.034 W/(m.K)	Tested according to ASTM C518
	At 15°C 0.035 W/(m.K)	
	At 23°C 0.036 W/(m.K)	
<b>Fire performance</b>	Spread of Flame Index.....0	Tested according to AS/NZS 1530.3 1999
	Smoke Developed Index..3	
<b>Reaction to fire</b>	Self-extinguishing, does not drip	
<b>Noise Reduction DIN 4109</b>	Acoustic Level to 30db (A)	

#### R Values

“R” value or thermal resistance is a measure of the ability of a material to retard heat flow.

Thermal resistance is used in combination with numerals to designate thermal resistance values. The higher the R-value the higher the insulating value.

There are a number of instances where the R-value is specified for the selection of an insulation material and its thickness. R-values are specified in the Building Code of Australia, and in several Australian and New Zealand standards. In the BCA, the required Total R-values for pipe insulation is listed in Specification J5.4.

Minimum R Value Requirement for Pipe Insulation			
System Type	Nominal Pipe Size		
	15mm - 40mm	41mm - 80mm	81mm - 125mm
For refrigerant lines not more than 2°C	R 1.3	R 1.7	R 2.0
For refrigerant lines greater than 2°C	Refer to BCA 2012 or NCC 2012 Section J5.4		
All other applications			

**Notes:** The given Material R-values are verified by an independent professional engineer.

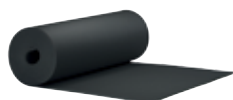
For insulation in the tables on the following pages, the Total R-value can be calculated by adding 0.12 for vertical pipework and 0.13 for horizontal pipework. Total R value will be approximately 0.2 higher where reflective cladding is fitted. The above calculations assume a still-air environment. In a ventilated environment, total R-value will be increased by 0.04.

#### Sheet Insulation



Cat. No.	Part No.	Description	Nominal Thickness		Sheet Size: m	Sheets Per Carton	R Value	List Price \$ Exc. GST
			mm	Inch				
210387	9F090007	Fire Rated Sheet Insulation	9	3/8"	1 x 1.5	20	0.25	\$70.04
210388	9F130007		13	1/2"		15	0.36	\$86.37
210389	9F190007		19	3/4"		10	0.53	\$127.31
210390	9F250007		25	1"		8	0.69	\$161.83

#### Sheet Insulation Rolls



Cat. No.	Part No.	Description	Nominal Thickness		Roll Size: m	R Value	List Price \$ Exc. GST
			mm	Inch			
210392	9F1300CS	Fire Rated Sheet Insulation	13	1/2"	1 x 8	0.25	\$535.52
210393	9F1900CS		19	3/4"	1 x 6	0.36	\$609.94
210394	9F2500CS		25	1"	1 x 4	0.53	\$553.00



**global brands - local service**

[www.actrol.com.au](http://www.actrol.com.au)

**ACTROL**

Subject to change without notice

134

Section 3

© 2015 Actrol Parts Pty Ltd ABN: 93 142 654 564

# Flexible Insulation

SuperlonFR.

## Superlon FR

Pipe & Sheet Insulation – Fire Rated

### Pipe Insulation



Insulation ID		9mm Wall			List Price \$ Exc. GST	13mm Wall			List Price \$ Exc. GST	19mm Wall			List Price \$ Exc. GST
mm	Inch	Cat. No.	Lengths Per Carton	R Value		Cat. No.	Lengths Per Carton	R Value		Cat. No.	Lengths Per Carton	R Value	
6	1/4"	210200	105	0.46	\$4.59	210225	50	0.74	\$6.58	210250	54	1.22	\$13.86
10	3/8"	210201	84	0.40	\$4.67	210226		0.64	\$6.90	210251	50	1.05	\$13.40
12	1/2"	210202	60	0.38	\$5.27	210227	40	0.61	\$7.43	210252	42	0.99	\$16.55
15	5/8"	210203	50	0.36	\$5.74	210228	36	0.57	\$8.01	210253	36	0.93	\$19.17
20	3/4"	210204	44	0.34	\$6.34	210229	32	0.53	\$9.46	210254		0.86	\$19.25
22	7/8"	210205	40	0.33	\$7.72	210230	28	0.52	\$10.48	210255	30	0.84	\$23.12
25	1"	210206	35	0.32	\$8.13	210231	23	0.51	\$10.75	210256		0.81	\$24.92
28	1 1/8"	210207	28		\$8.61	210232	43	0.49	\$11.60	210257	25	0.79	\$27.13
32	1 1/4"	210208	25	0.31	\$12.47	210233	35	0.48	\$16.55	210258	20	0.76	\$31.88
35	1 3/8"	210209	45		\$12.47	210234	33	0.47	\$17.57	210259		0.75	\$33.12
40	1 1/2"	210214	40	0.30	\$13.16	210241	30	0.46	\$18.49	210266	18	0.72	\$40.03
42	1 5/8"	210210	36		\$13.33	210235	24		\$19.02	210260	16		
50	2"	210212	25	0.29	\$14.96	210237	20	0.44	\$24.90	210262			0.69
54	2 1/8"	210213			\$16.59	210238			\$26.49	210263	12	0.68	\$43.20
60	2 3/8"	210215	20	0.28	\$21.30	210239	16	0.43	\$30.58	210264	9	0.67	\$59.00
67	2 5/8"	210216			\$27.30	210240	15	0.42	\$30.76	210265		0.66	\$58.64
76	3"	210217	16		\$29.01	210242	14		\$49.17	210267	8	0.64	\$64.21
80	3 1/8"	210218	18		\$41.56	210243	12	0.41	\$54.06	210268	7		
89	3 1/2"				210244	\$54.63			210269	0.63		\$84.07	
101	3 7/8"					210245	8	0.40	\$82.96	210270	6	0.62	\$90.52
114	4 1/2"					210246	6		\$92.15	210249		0.61	\$103.41

Insulation ID		25mm Wall			List Price \$ Exc. GST	32mm Wall			List Price \$ Exc. GST	38mm Wall			List Price \$ Exc. GST
mm	Inch	Cat. No.	Lengths Per Carton	R Value		Cat. No.	Lengths Per Carton	R Value		Cat. No.	Lengths Per Carton	R Value	
6	1/4"												
10	3/8"	210282	30	1.49	\$23.86								
12	1/2"	210283		1.41	\$25.12	210301	16	1.90	\$76.61				
15	5/8"	210284	25	1.32	\$27.30	210302		1.80	\$77.75	210325	10	2.30	\$97.23
20	3/4"	210285		1.22	\$30.09	210303	1.70	\$76.11	210326	2.10		\$97.23	
22	7/8"	210286	20	1.19	\$35.91	210304	15	1.60	\$82.33	210327		2.00	\$104.21
25	1"	210271		1.14	\$38.85	210305		\$89.50	210328	\$104.21			
28	1 1/8"	210287	16	1.11	\$41.84	210306	12	1.50	\$89.50	210329		1.90	\$104.21
32	1 1/4"	210273		1.07	\$46.23	210307			\$90.26	210330	1.80	\$107.14	
35	1 3/8"	210288		1.05	\$49.86	210308		\$90.26	210331	\$109.64			
40	1 1/2"	210274	15	1.01	\$53.30	210309	11	1.40	\$90.26	210332	8	1.70	\$117.95
42	1 5/8"	210289	12	1.00	\$56.63	210310		\$92.05	210333	\$122.23			
50	2"	210290	9	0.96	\$72.87	210311	8	1.30	\$117.21	210334		1.60	\$171.65
54	2 1/8"	210291		0.95	\$72.48	210312			\$121.68	210335			\$176.23
60	2 3/8"	210275		0.93	\$81.09	210313			\$170.94	210336		6	\$183.21
67	2 5/8"	210292	8	0.91	\$84.43	210314	7	1.20	\$174.49	210337	5	1.50	\$188.03
76	3"	210293	5	0.88	\$110.58	210315	5		\$182.31	210338		\$199.04	
80	3 1/8"	210294			\$116.17	210316			\$184.45	210339	\$199.04		
89	3 1/2"	210295	4	0.86	\$116.41	210317	5	1.10	\$190.73	210340	4	1.40	\$206.30
101	3 7/8"	210296		0.84	\$127.12	210318			\$198.19	210341		\$215.19	
114	4 1/2"	210297		0.83	\$141.37	210319			4	\$206.01	210342	3	1.30

Pipe Insulation is sold in 2 metre lengths  
All dimensions are nominal



global brands - local service

www.actrol.com.au

**ACTROL**

Subject to change without notice

135

Section 3

© 2015 Actrol Parts Pty Ltd ABN: 93 142 654 564

# Flexible Insulation

**THERMOBREAK**  
Thermal Insulation



## Thermobreak

### Pipe Insulation

Thermobreak is preformed tube insulation for steel and copper pipes. It is made from physically cross linked (irradiation) closed-cell, polyolefin foam, factory bonded to pure, reinforced aluminium foil. With a lower thermal conductivity than any other flexible insulation material, almost zero vapour permeability, and its all-in-one concept, Thermobreak provides superior energy saving performance, fast and simple installation, and trouble-free operation in a variety of environments.

#### Features

- Physically (irradiation) cross linked foam
- Fire rated - tested to AS/NZS 1530.3 - 1999
- Green Building Compliant
- Zero Global Warming Potential (GWP)
- Engineered cell size for optimum insulation performance
- Made without Ozone destroying agents such as CFCs or HCFCs
- Best insulation of any flexible insulation materials ( 0.032 W/mK) @ 23°C
- Better vapour permeability resistance than any other flexible insulation material
- Critical insulation performance factors such as thermal conductivity, vapour permeability, as well as fire performance, smoke density and toxicity are tested and certified by independent laboratories
- No additional vapour barriers or coatings required
- Certified to international Fire and Smoke standards
- Certified Green Star product (VOC)
- Non fibrous, will not allow bacterial growth

#### Minimum R Value Requirement for Pipe Insulation - Class 2 to Class 9 Buildings (Applications other than domestic houses)

System Type	Nominal Pipe Size	
	15mm – 40mm	41mm – 80mm
For refrigerant lines not more than 2°C	R 1.3	R 1.7
For refrigerant lines greater than 2°C	Refer to BCA 2010 or NCC 2011 Section J5.4	
All other applications		

Insulation ID		25mm Wall			List Price \$ Exc. GST	30mm Wall			List Price \$ Exc. GST	40mm Wall			List Price \$ Exc. GST	50mm Wall			List Price \$ Exc. GST
mm	Inch	Cat. No.	Pcs. Per Bag	R Value		Cat. No.	Pcs. Per Bag	R Value		Cat. No.	Pcs. Per Bag	R Value		Cat. No.	Pcs. Per Bag	R Value	
6	1/4"	210658	60	1.95	\$34.69												
10	3/8"	210659		1.73	\$35.43												
13	1/2"	210660		1.59	\$36.31	210690	40	2.02	\$41.56	210720	25	2.93	\$53.10				
16	5/8"	210661	50	1.49	\$37.35	210691		1.89	\$42.78	210721		2.74	\$60.15				
20	3/4"	210662		1.39	\$39.67	210692		1.76	\$49.04	210722		2.55	\$70.73	210752	20	3.41	\$102.92
22	7/8"	210663	40	1.33	\$43.34	210693	30	1.69	\$58.53	210723	20	2.44	\$76.47	210753		3.27	\$105.32
25	1"	210664		1.29	\$51.00	210694		1.63	\$60.25	210724		2.35	\$82.23	210754		3.14	\$107.72
27	1 1/8"	210665	35	1.26	\$45.24	210695	25	1.59	\$60.40	210725		2.3	\$83.94	210755	15	3.07	\$111.14
32	1 1/4"	210666		1.21	\$47.55	210696		1.52	\$66.32	210726	15	2.19	\$85.74	210756		2.92	\$114.56
34	1 3/8"	210667		1.19	\$48.50	210697		1.49	\$72.38	210727		2.16	\$92.42	210757		2.87	\$121.34
38	1 1/2"	210668	30	1.15	\$50.00	210698	20	1.45	\$75.81	210728	12	2.09	\$99.14	210758	12	2.78	\$125.61
42	1 5/8"	210669		1.13	\$55.73	210699		1.41	\$84.85	210729		2.03	\$103.57	210759		2.7	\$144.42
48	1 7/8"	210670		1.09	\$60.54	210700	15	1.37	\$87.90	210730		1.96	\$107.98				
51	2"	210671	25	1.08	\$62.61	210701		1.36	\$87.90	210731	12	1.94	\$110.39	210761	10	2.57	\$179.82
54	2 1/8"	210672		1.07	\$63.75	210702		1.33	\$91.17	210732		1.9	\$113.26	210762		2.52	\$160.05
60	2 3/8"	210673		1.04	\$65.01	210703	14	1.3	\$94.63	210733		1.85	\$115.16	210763		2.45	\$166.76
64	2 1/2"	210674	20	1.03	\$67.88	210704		1.28	\$97.70	210734	10	1.82	\$116.93	210764	7	2.41	\$198.99
67	2 5/8"	210675		1.02	\$68.53	210705		1.27	\$100.15	210735		1.8	\$123.70	210765		2.38	\$207.44
76	3"	210676	15	1	\$80.42	210706	12	1.24	\$114.76	210736		1.75	\$130.58	210766		2.31	\$216.02
89	3 1/2"	210677		0.97	\$87.06	210707		1.2	\$116.67	210737	7	1.69	\$140.41	210767	6	2.22	\$234.00
102	4"	210678		0.95	\$92.47	210708	8	1.17	\$126.57	210738		1.65	\$177.56	210768		2.16	\$289.76
115	4 1/2"	210679	10	0.93	\$99.34	210709		1.15	\$144.58	210739		1.61	\$193.68	210769	5	2.11	\$272.00
127	5"	210680		0.92	\$100.35	210710	6	1.13	\$153.42	210740	6	1.58	\$213.51	210770		2.06	\$292.17
140	5 1/2"	210681		0.91	\$108.89	210711		1.11	\$178.57	210741		1.55	\$221.83	210771		2.02	\$310.65
152	6"	210682	6	0.9	\$112.46	210712	5	1.1	\$188.46	210742	4	1.53	\$230.32	210772	4	1.99	\$329.22
168	6 1/2"	210683		0.89	\$161.16	210713		1.09	\$197.25	210743		1.51	\$270.24	210773		1.96	\$335.25
204	8"	210684		0.87	\$223.81	210714		1.06	\$236.55	210744		1.47	\$284.35	210774		1.9	\$390.56

Pipe Insulation Sold in 2 metre Lengths Note: All dimensions are nominal



global brands - local service

Subject to change without notice

www.actrol.com.au

**ACTROL**

# Flexible Insulation

**Armaflex®**

## Armaflex

### 520 Adhesive

Armaflex 520 is a general purpose, quick drying adhesive for the joining of Armaflex pipe and sheet insulation. When applied to clean and prepared surfaces, and fully cured, it maintains a high resistance to water vapour.



Cat. No.	Part No.	Description	Container Size	List Price \$ Exc. GST
210112	IESAA00716500	Armaflex 520 Adhesive	500ml	\$53.87
210113	IESAA00714500	Armaflex 520 Adhesive	1 litre	\$69.57
210114	IESAA00714505	Armaflex 520 Adhesive	5 litre	\$248.79

**Bostik**

## Bostik

### Insulation Adhesive

An air-drying contact adhesive that is excellent for joining seams and butt joints of Superlon Pipe and Sheet Insulation. The adhesive may also be used to apply Superlon Sheet Insulation to flat or curved metal surfaces.



Cat. No.	Size	List Price \$ Exc. GST
210109	500ml Tin	\$39.48
210110	1 Litre Tin	\$51.02
210111	4 Litre Tin	\$155.94
210130	25mm Plastic Handled Brush for Adhesive Application	\$7.16

**SuperlonFR**

## Superlon FR

### Foam Insulation Tape

Prevents pipe sweat, can also be used to reduce heat loss on hot pipes below 70°C. Easily cut in pieces and moulded around fittings and valves, saving the higher cost of specially cast forms. Adheres to clean metal surfaces and to itself. Wrap tape in a spiral around pipe. Butt the edges so that no metal is showing. For quicker application, overlap by approximately 6mm is suggested. Overlap the tape half its width for a double layer application. Avoid single layer butt edge wrapping on dual temperature or heated lines. Irregular shapes can be insulated by pressing small pieces of tape around fittings.



Cat. No.	Nominal Size	List Price \$ Exc. GST
210088	3mm thick x 50mm wide 9.14m long roll	\$43.32

**insulflex**

## Insulflex

### Cork Insulation Tape

Cork Insulation Tape may be used for either hot or cold temperature application, provided that its service temperature range of -29° to 70°C is not exceeded. Used on pipes or tubes, in commercial or residential building, air conditioning units, refrigerated units and in other similar applications.

The thickness of the insulation required for cold pipes depends on the pipe temperature – the colder the pipe, the thicker the insulation needed. High humidities also make necessary a thicker insulation.

Cork Insulation Tape is economical for heat and humidity loads which require up to 6 or 7 wrappings. Since it can be cut in pieces and moulded around fittings and valves, it saves the higher cost of special cast forms for these uses. Cements or supplemental binds are not required. Adheres to clean metal surfaces and to itself; joints are self sealing.



Cat. No.	Part No.	Nominal Size	List Price \$ Exc. GST
210087	VCT2	3mm thick x 50mm wide 9.14m long roll	\$53.98



**global brands - local service**

[www.actrol.com.au](http://www.actrol.com.au)

**ACTROL**

Subject to change without notice

137

Section 3

© 2015 Actrol Parts Pty Ltd ABN: 93 142 654 564



# Check Valves



## Castel 3112 Series – Male Flare

Vertical Mounting preferred, with Arrow Upward



Cat. No.	Part No.	Size: M. Flare	Kv Factor m3/hr	Pressure Diff kPa (2)	Fluid Temp. °C	Max Press. kPa	List Price \$ Exc. GST
214076	3112/2	1/4"	0.4	10	-40 to 120	4500	\$82.02
214077	3112/3	3/8"	1.6				\$82.67
214078	3112/4	1/2"	1.8				\$83.09
214079	3112/5	5/8"	3.3				\$127.48
214080	3112/6	3/4"	3.3				\$132.40

## 3132 Series – Female Solder – Extended Ends

Vertical Mounting preferred, with Arrow Upward



Cat. No.	Part No.	Size: Solder	Kv Factor m3/hr	Pressure Diff kPa (2)	Fluid Temp. °C	Max Press. kPa	List Price \$ Exc. GST
214087	3132/2	1/4"	0.5	10	-40 to 120	4500	\$107.54
214088	3132/3	3/8"	1.6				\$112.65
214089	3132/4	1/2"	1.8				\$114.64
214090	3132/5	5/8"	3.3				\$162.08

## 3120 Series – Female Solder

For Horizontal Mounting Only



Cat. No.	Part No.	Size: Solder	Kv Factor m3/hr	Pressure Diff kPa (2)	Fluid Temp. °C	Max Pressure kPa	List Price \$ Exc. GST
214081	3122/7	7/8"	6.6	10	-40 to 120	4500	\$298.41
214082	3122/9	1 1/8"	8.8				\$298.41
214083	3122/11	1 3/8"	15.2				\$432.14
214084	3122/13	1 5/8"	25				\$689.47
214085	3122/17	2 1/8"	40				\$1,152.52

(1) kv factor is the water flow in m3/hr at a pressure drop across the valve of 100 kPa

(2) PD = the minimum pressure difference at which the valve is completely open



## Danfoss NRV Series

Male Flare

Cat. No.	Model No.	Part No.	Size: Male Flare	Version	Kv Factor: m3/hr (1)	Pressure Diff: kPa (2)	Fluid Temp.°C	Max Press: kPa	List Price \$ Exc. GST
214058	NRV6	020-1040	1¼"	Straight	0.56	7	-50 to 140	4600	\$117.18
214059	NRV10	020-1041	3⁄8"		1.43				\$128.90
214060	NRV12	020-1042	1½"		2.05	5			\$140.64
214061	NRV16	020-1043	5⁄8"		3.6				\$279.35

Female Solder



Cat. No.	Model No.	Part No.	Size: Solder	Version	Kv Factor: m3/hr (1)	Pressure Diff: kPa (2)	Fluid Temp.°C	Max Press: kPa	List Price \$ Exc. GST	
214048	NRV6S	020-1010	1¼"	Straight	0.56	7	-50 to 140	4600	\$117.22	
214049	NRV10S	020-1011	3⅝"		1.43				\$128.92	
214050	NRV12S	020-1012	1½"		2.05	5			\$140.62	
214065	NRV16S	020-1018	5⅝"		3.6				\$164.07	
214052	NRV22S	020-1020	7⅝"	Angle	8.5	4				\$527.37
214054	NRV28S	020-1021	1⅞"		19					\$644.60
214056	NRV35S	020-1026	1⅜"		29					\$703.23

(1) kv factor is the water flow in m3/hr at a pressure drop across the valve of 100 kPa

(2) PD = the minimum pressure difference at which the valve is completely open



global brands - local service

www.actrol.com.au

**ACTROL**

Subject to change without notice

# Liquid and Moisture Indicators



## Castel

Male Flare



Cat. No.	Part No.	Description	Connections	List Price \$ Exc. GST
217101	3910-22	Male Flare Sight Glass	1/4"	\$36.26
217102	3910-33		3/8"	\$39.36
217103	3910-44		1/2"	\$47.11
217104	3910-55		5/8"	\$49.18
217105	3910-66		3/4"	\$69.79

Male x Female Flare

Cat. No.	Part No.	Description	Connections	List Price \$ Exc. GST
217110	3950-22	Male x Female Flare Sight Glass	1/4"	\$40.87
217111	3950-33		3/8"	\$46.71
217112	3950-44		1/2"	\$49.50
217113	3950-55		5/8"	\$69.18

Solder



Cat. No.	Part No.	Description	Connections: ODF	List Price \$ Exc. GST
217126	3940-2	Solder Sight Glass	1/4"	\$61.67
217127	3940-3		3/8"	\$66.86
217128	3940-4		1/2"	\$69.56
217129	3940-5		5/8"	\$76.66
217130	3940-6		3/4"	\$92.37
217131	3940-7		7/8"	\$131.90
217132	3940-9		1 1/8"	\$165.11



## Danfoss

Male Flare



Cat. No.	Part No.	Model No.	Description	Connections	List Price \$ Exc. GST
217170	014L0161	SGPN6	Male Flare Sight Glass	1/4"	\$51.46
217171	014L0162	SGPN10		3/8"	\$55.07
217172	014L0163	SGPN12		1/2"	\$73.87
217173	014L0165	SGPN16		5/8"	\$73.87
	014L0166	SGPN19		3/4"	P.O.A

Male x Female Flare



Cat. No.	Part No.	Model No.	Description	Connections	List Price \$ Exc. GST
217175	014L0171	SGPN6	Male x Female Flare Sight Glass	1/4"	\$54.30
217176	014L0172	SGPN10		3/8"	\$57.56
217177	014L0173	SGPN12		1/2"	\$71.92
217178	014L0174	SGPN16		5/8"	\$71.48
	014L0175	SGPN19		3/4"	P.O.A

Solder



Cat. No.	Part No.	Model No.	Description	Connections: ODF	List Price \$ Exc. GST
217180	014L0181	SGPN6S	Solder Sight Glass	1/4"	\$54.30
217181	014L0182	SGPN10S		3/8"	\$57.56
217182	014L0183	SGPN12S		1/2"	\$70.96
217183	014L0184	SGPN16S		5/8"	\$73.26
217184	014L0185	SGPN19S		3/4"	\$104.48
217185	014L0186	SGPN22S		7/8"	\$108.10
	014L0187	SGPN22S		1 1/8"	P.O.A



global brands - local service

www.actrol.com.au

**ACTROL**

Subject to change without notice

139

Section 3

© 2015 Actrol Parts Pty Ltd ABN: 93 142 654 564

3

# Liquid and Moisture Indicators



## Alco

Male Flare

Cat. No.	Part No.	Model No.	Description	Connections	List Price \$ Exc. GST
217300	65391	HMI-1-MM2	Male Flare Sight Glass	1/4"	\$54.31
217301	65392	HMI-1-MM3		3/8"	\$58.56
217302	65393	HMI-1-MM4		1/2"	\$65.40
217303	65394	HMI-1-MM5		5/8"	\$66.10
217304	65395	HMI-1-MM6		3/4"	\$83.28

Male x Female Flare

Cat. No.	Part No.	Model No.	Description	Connections	List Price \$ Exc. GST
217312	65396	HMI-1-FM2	Male x Female Flare Sight Glass	1/4"	\$57.06
217313	65397	HMI-1-FM3		3/8"	\$62.97
217314	65398	HMI-1-FM4		1/2"	\$66.71

Male x Female Swivel Flare

Cat. No.	Part No.	Model No.	Description	Connections	List Price \$ Exc. GST
217315	65399	HMI-1-MU2	Male x Female Swivel Flare Sight Glass	1/4"	\$89.35
217316	65400	HMI-1-MU3		3/8"	\$94.41
217317	65401	HMI-1-MU4		1/2"	\$99.64
217318	65402	HMI-1-MU5		5/8"	\$101.33

Solder

Cat. No.	Part No.	Model No.	Description	Connections: ODF	List Price \$ Exc. GST
217305	65405	HMI-1-TT2	Solder Sight Glass	1/4"	\$60.09
217306	65406	HMI-1-TT3		3/8"	\$63.13
217307	65407	HMI-1-TT4		1/2"	\$67.20
217308	65408	HMI-1-TT5		5/8"	\$86.85
217309	65409	HMI-1-TT6		3/4"	\$83.51
217310	65410	HMI-1-TT7		7/8"	\$94.70
217311	65411	HMI-1-TT9		1 1/8"	\$118.50



global brands - local service

Subject to change without notice

[www.actrol.com.au](http://www.actrol.com.au)

**ACTROL**

© 2015 Actrol Parts Pty Ltd ABN: 93 142 654 564

# Sealants



## Bostik

### Silicones

Z Bond 7E is a DIY grade roof & gutter silicone.

Cat. No.	Part No.	Description	Size	Colour	List Price \$ Exc. GST
231008	762440	DIY Grade Silicone	300g Cartridge	Translucent	\$11.16

Plumfix is a trade quality industrial grade roof & gutter silicone.

Cat. No.	Part No.	Description	Size	Colour	List Price \$ Exc. GST
231009	306932	Industrial Grade Silicone	300g Cartridge	Translucent	\$14.12

### Adhesives & Sealants

No More Nails is a general-purpose adhesive and sealant for interior or exterior general construction work.

Cat. No.	Part No.	Description	Size	Colour	List Price \$ Exc. GST
231270	149063	No More Nails	320g Cartridge	Beige	\$7.34

Firecaulk is a fire rated general purpose product for construction joints and the sealing of service penetrations in plasterboard, concrete floors and masonry wall constructions.

Cat. No.	Part No.	Description	Size	Colour	List Price \$ Exc. GST
231272	245410	Firecaulk	480g Cartridge	White	\$17.09

Flex-E-Duct II is an acrylic (water based) fire rated polymer sealing compound for sealing around duct work.

Cat. No.	Part No.	Description	Size	Colour	List Price \$ Exc. GST
231273	205990	Flex-E-Duct	450g Cartridge	Grey	\$18.15

Heat Transfer Sealant is designed specifically for the refrigeration industry, as an odourless, non-staining sealing compound.

Cat. No.	Part No.	Description	Size	Colour	List Price \$ Exc. GST
231275	042951	1128 Heat Transfer Sealant	480g Cartridge	Grey	\$17.01
231278	131504	5603 Heat Transfer Sealant	20kg Drum		\$538.19

Non Skinning Mastic 5612 is specifically formulated as a bedding or gasket style sealant.

Cat. No.	Part No.	Description	Size	Colour	List Price \$ Exc. GST
231274	170526	5612 Non Skinning Coolroom Mastic	450g Cartridge	White	\$15.15

### Cleaners

Handi-Clean towels are a waterless, pre-moistened, disposable anti-bacterial cleaning towel that are tough on dirt, gentle on hands and leaves no residue so does not require to be rinsed off or dried.

Cat. No.	Part No.	Description	List Price \$ Exc. GST
231001	257753	Handi-Clean Towels 90 pack	\$61.15

### Caulking Guns

Cat. No.	Part No.	Description	List Price \$ Exc. GST
231010	174882	Trade Skeleton Gun	\$26.72



## Highside

### Leak Lock – Flexible Joint Sealer

Leak Lock is a soft setting, pipe joint compound. It is a resin based, brushable paste that seals by adhering to internal joint surfaces and by filling joint voids. Use it to seal threaded joints, flange joints, gasket surfaces and all mating surfaces.

Cat. No.	Part No.	Size	List Price \$ Exc. GST
231139	10001	39ml tube	\$26.20



## La-Co

### Heat-Seal Stik

Seals small leaks instantly. Withstands refrigerants, oil, gas, water, air, chemicals, solvents. Use on pressure and vacuum systems.

Cat. No.	Part No.	Size	List Price \$ Exc. GST
231135	11575	11g	\$76.79

global brands - local service

www.actrol.com.au



© 2015 Actrol Parts Pty Ltd ABN: 93 142 654 564

Subject to change without notice

## Sealants

**LA-CO**



**La-Co**

PTFE Pipe Thread Tape

Cat. No.	Size	List Price \$ Exc. GST
231143	13mm x 10 metre roll	\$1.97

**Virginia**

Permagum Sealing Compound



Cat. No.	Part No.	Size	List Price \$ Exc. GST
231146	PP22	900 gram (2 lb.)	\$58.28
231148	PP36	3/8" Cords - 6 metre (20') roll	\$59.88

## Tapes

**Nitto**

**Nitto**

204E Duct Tape



Cat. No.	Part No.	Description	Width: mm	Length: Metres	Colour	Qty: Sleeve	Qty: Carton	List Price \$ Exc. GST
231031	204E BLACK	Duct Tape	48	30	Black	4	64	\$9.00
231032	204E SILVER				Silver			\$9.00
231033	204E WHITE				White			\$9.00

288EFR Flame Retardant Duct Tape



Cat. No.	Part No.	Description	Width: mm	Length: Metres	Colour	Qty: Sleeve	Qty: Carton	List Price \$ Exc. GST
231021	288EFR BLACK	Flame Retardant Duct Tape	48	30	Black	4	64	\$10.28
231022	288EFR SILVER				Silver			\$10.28

Asset PVC Duct Tape



Cat. No.	Width	Length	Colour	List Price \$ Exc. GST
231047	50 mm	30 m	Black	\$9.00
231046			White	\$9.00
231048			Grey	\$9.00
231049	72 mm			\$14.13

Electrical Insulation Tape



Cat. No.	Colour	Pack Qty	List Price \$ Exc. GST
231145	Black	1	\$3.73
231155	Red	10	\$20.98
231156	Blue		\$20.98
231157	Black		\$20.98
231158	White		\$20.98
231159	Green/Yellow		\$20.98
231160	Mixed		\$20.98

Abrasive Cloth Tape



Cat. No.	Grit No.	Width	Length	List Price \$ Exc. GST
231099	100	25mm	50 meters (sold per meter)	\$2.50
231100	180			\$2.50

**Precision**

Aluminium Foil Tape



Cat. No.	Width	Length	List Price \$ Exc. GST
231122	24mm	45 metres	\$16.50
231123	48mm	50 metres	\$43.10
231124	72mm		\$64.70
231125	96mm		\$83.22

Reinforced Foil Tape



Cat. No.	Width	Length	List Price \$ Exc. GST
231041	48mm	50 metres	\$57.08
231039	72mm		\$83.77

global brands - local service

www.actrol.com.au

**ACTROL**

Subject to change without notice

142

Section 3

© 2015 Actrol Parts Pty Ltd ABN: 93 142 654 564



# Refrigeration Hardware



## CRH

### Evaporator Mounting Kits



Cat. No.	Part No.	Description	Material	Suits Panel Thickness	Kit Contents	List Price \$ Exc. GST
230070	CRH-600K	Evaporator Mounting Kit	6.6 Nylon	50-100mm	4 x Mushroom Bolts 8 x Nuts 4 x Washers	\$51.63
230072	CRH-610K			50-200mm		\$64.22

### Nylon M6 Bolt, Nut & Washer Set

Cat. No.	Part No.	Description	Material	Suits Panel Thickness	Kit Contents	List Price \$ Exc. GST
233266	NM6BNW	Nylon M6 Bolt, Nut & Washer	Nylon	50-180mm	1x Nylon Bolt 1x Nuts & Washer	\$5.26

### Shelf Support Strip and Clips



Cat. No.	Part No.	Description	LENGTH	List Price \$ Exc. GST
230026	SS3	Adjustable Shelf Support Strip	914mm (3')	\$5.67
230027	SS4		1219mm (4')	\$11.53
230028	SS5		1524mm (5')	\$10.49
230029	SS6		1829mm (6')	\$13.43
230037	SC	Plain Clips		\$1.67
230038	SCL	Clips with Lug		\$1.67

### Allthread Brass Rod, Nuts and Washers



Cat. No.	Description	Size	List Price \$ Exc. GST
230055	Threaded Brass Rod (Whitworth)	3/8" Dia. x 914 mm (3') long	\$59.82
230059	Brass Nuts (Whitworth)	3/8"	\$2.23
230064	Brass Washers		\$0.48

### Mushroom Caps



Cat. No.	Description	Size	List Price \$ Exc. GST
	CSD-10	Mushroom Cap. 10mm Thread. 62mm Washer Embedded	P.O.A
233256	CSD-12	Mushroom Cap. 12mm Thread. 62mm Washer Embedded	\$7.76

### Interior Light Globes



Cat. No.	Connection	Watts	Volts	Type	List Price \$ Exc. GST
231015	Bayonet	15	240	Pilot	\$9.45
231016	Screw				\$6.33
231017	Small Bayonet				\$6.33
231018	Small Screw				\$6.33



global brands - local service

www.actrol.com.au

**ACTROL**

Subject to change without notice

143

Section 3

© 2015 Actrol Parts Pty Ltd ABN: 93 142 654 564

# Refrigeration Hardware



## Kason

### Safety Latches & Strikes

K56 Series



Cat. No.	Part No.	Description		Finish	List Price \$ Exc. GST
233232	K56L05020	Safety Latch		Chrome Plated	\$712.20
233260	K56CL5020	Safety Latch with Cylinder Lock			\$1,006.68
2332311	K565002	Offset Adjustable Strike	-3.2mm to 6.4mm		\$307.88
233231	K565003		19.0mm to 38.1mm		\$326.78
233230	K565005		44.5mm to 63.5mm		\$373.83
233229	K565008		76.2mm to 101.6mm		\$510.80

K77 Series



Cat. No.	Part No.	Description		Finish	List Price \$ Exc. GST
233290	K778L06020	Safety Latch		316 Stainless Steel	\$1,071.38
233289	K778CL6020	Safety Latch with Cylinder Lock			\$1,096.73
233288	K778002	Offset Adjustable Strike	-3.0mm to 19.0mm		\$407.43
	K77804		44mm to 63mm		P.O.A

K56 Series



Cat. No.	Part No.	Description		Finish	List Price \$ Exc. GST
233262	K56L0T21	Safety Latch		TuffKote	\$759.40
233261	K56CLT108	Safety Latch with Cylinder Lock			\$816.50
233263	K56T002	Adjustable Strike	-3.2mm TO 6.4mm		\$258.46
233264	K56T003		19.0mm to 38.1mm		\$266.03
233265	K56T005		44.5mm to 63.5mm		\$310.40

K58 Series



Cat. No.	Part No.	Description		Finish	List Price \$ Exc. GST
233235	K58L05021	Safety Latch		Chrome Plated	\$500.67
233238	K585001	Offset Adjustable Strike	-3.2mm to 6.4mm		\$228.29
233239	K585002		19.0mm to 38.1mm		\$234.63
233237	K585003		44.5mm to 63.5mm		\$261.58

K78 Series



Cat. No.	Part No.	Description	Finish	List Price \$ Exc. GST
233292	K78L05020	Safety Latch with Radial Tongue	Chrome Plated	\$949.63
233291	K78CL05020	Safety Latch with Radial Tongue with Cylinder Lock	Chrome Plated	\$1,006.68



## CRH

### Safety Latch Sets

L02 Series



Cat. No.	Part No.	Description	Finish	List Price \$ Exc. GST
233277	L02	Magnet Assy.	Perspex backing, aluminium spacer, pot magnet zinc plated, striker aluminium.	\$323.58

### Safety Latch Sets

AH-1178 Series



Cat. No.	Part No.	Description	Contents	Finish	List Price \$ Exc. GST
233271	AH-1178-05	Safety Latch Set	Latch Strike - Flush Internal Release	Chrome Plated	\$321.06
233272	AH-1178		Latch Strike - 44mm to 60mm Adjust. Internal Release		\$321.06

AH-838 Series



Cat. No.	Part No.	Description	Contents	Finish	List Price \$ Exc. GST
233270	AH-838	Safety Latch Set	Latch Strike 16mm to 32mm Adjust. Internal Release	Chrome Plated	\$661.01



global brands - local service

www.actrol.com.au

**ACTROL**

Subject to change without notice

# Refrigeration Hardware



## Kason

### Inside Release Handles



Cat. No.	Part No.	Brand	Description	Material	Mounting Holes	Suits Latch	List Price \$ Exc. GST
233249	K481	Kason	Nylon Push Handle with Luminous Knob	Steel Rod & Flange	Drilled for 5mm screws	K56, K58, W38	\$71.33
233250	K483		Paddle Handle with Rod	Zinc Plated Steel		K56, R5612	\$126.51
233252	K486		Recessed Push Handle - max 6" Panel	Plastic Housing & Steel Rod		K56	\$182.32
233258	K481SA600		S/S Push Handle Knob Offset 85mm	Stainless Steel Rod			\$149.04
233259	K481SC600		S/S Push Handle Knob Offset 80mm				\$149.04
233253	AH-1178C	CRH	Nylon Push Handle with Luminous Knob	Nylon		AH-1178	\$62.95
233254	A320		Mushroom Bolt M16 x 200mm			-	-

**PUSH**



FOR EMERGENCY ONLY  
FULLY UNSCREW WING NUT  
COUNTER CLOCKWISE  
AND PUSH OUT DOOR

### Inside Release Instructions

Cat. No.	Part No.	Description	Message*	List Price \$ Exc. GST
	K1229	Luminous Sign	a	P.O.A
233180	P07-PW	Luminous Instructions For Operating Emergency Inside Release Mechanism	b	\$20.77
233182	P07-SW		c	\$20.77
233181	P07-SK		d	\$20.77
233255	Arrow Label	Non luminous Direction Lable		\$10.48
233293	Label-01	Luminous Push Sticker Black on White		\$15.75
233294	Label-05	Luminous Push Sticker on Green		\$31.50
233295	Label-06	Luminous Running Man Exit Sticker		\$23.09

\*Message:

a: Push

b: For emergency only fully unscrew wing nut counter clockwise and push out door

c: For emergency only fully unscrew key ring counter clockwise and slide door open

d: For emergency only fully unscrew wing nut counter clockwise and slide door open

## Kason

### Hydraulic Door Closers

#### K1093 Series



Cat. No.	Part No.	Description	Offset	Finish	List Price \$ Exc. GST
233195	K109304	Hydraulic Door Closer	Flush	Steel with Chrome Finish - Plastic Cover	\$614.48
233196	K109308		28.6mm		\$516.83



global brands - local service

www.actrol.com.au

**ACTROL**

Subject to change without notice

145

Section 3

© 2015 Actrol Parts Pty Ltd ABN: 93 142 654 564

# Refrigeration Hardware



## CRH

### European Latches & Strikes

Cat. No.	Part No.	Description	Finish	List Price \$ Exc. GST
233337	CRH-266	Cool Room Latch Set with Key Lock	Composite	\$419.48

### Latches

Cat. No.	Part No.	Description	Finish	List Price \$ Exc. GST
	F420			P.O.A
233036	F430CRH-115	Coolroom & Freezer Latch Set to suit Doors up to 115mm Thick	No Lock	\$441.50
233038	F430CRH-165	Coolroom & Freezer Latch Set to suit Doors up to 165mm Thick	No Lock	\$564.47
233040	F431CRH-115	Coolroom & Freezer Latch Set to suit Doors up to 115mm Thick	Lock	\$570.77
233041	F431CRH-165	Coolroom & Freezer Latch Set to suit Doors up to 165mm Thick	Lock	\$581.25
233039	F430P	Packer for F430/F431- 20mm		\$24.14
233047	F521	Cool Room Latch Set	Lock	\$598.04
233046	F520		No Lock	\$568.68
233048	F5211	Adjustable Strike to Suit F521 & F520	27mm to 43mm	\$119.20
233049	F5212		44mm to 60mm	\$128.00
233050	F5213		61mm to 77mm	\$165.79
233051	F521SHIM	Strike Packer 17mm		\$18.87

### Cabinet Latches & Strikes

#### CRH 5710 Series

Cat. No.	Part No.	Description	Finish	List Price \$ Exc. GST
233082	CRH5710X	Cabinet Latch		\$264.16
233083	CRH5722X	Offset Adjustable Strike 19 to 25mm	Chrome Plated	\$92.55
233085	CRH5723X			\$102.82

#### DL Series

Cat. No.	Part No.	Description	Strike Adjustment	Finish	List Price \$ Exc. GST
233088	C-DLC/LHB	Cabinet Latch with Strike	40mm	Chrome Plated	\$102.82
233089	C-DLB/LHA		19 to 30mm		\$115.41
233090	C-DLA/LHC		Flush		\$102.82

#### 1961 Series

Cat. No.	Part No.	Description	Spring Tension Adjustment	Finish	List Price \$ Exc. GST
233162	CRH1961X	Cabinet Latch with Strike	6.8 to 16.3kg	Chrome Plated	\$198.30



global brands - local service

www.actrol.com.au

**ACTROL**

Subject to change without notice



# Refrigeration Hardware



## Kason

### Security Locks

50mm x 22mm x 25mm. Keyed alike.



Cat. No.	Part No.	Description	Finish	List Price \$ Exc. GST
	100SL	Security Block Lock	Chrome Plated	P.O.A
	100SLB		Black Powder Coated	P.O.A



## CRH

### Edge Mount Latches & Strikes

6188 Series - Mechanical



Cat. No.	Part No.	Description	Finish	List Price \$ Exc. GST
233002	CRH6188NX	Edge Mount Latch with Strike	Chrome Plated	\$251.82
233003	CRH6188LX	Edge Mount Latch with Strike & Key Lock		\$270.70

1200 Series - Mechanical



Cat. No.	Part No.	Description	Finish	List Price \$ Exc. GST
233005	AH-1200	Edge Mount Latch with Adjustable Strike & Key Lock	Chrome Plated	\$146.88



## Kason

### Edge Mount Latches & Strikes

K533 Series - Mechanical



Cat. No.	Part No.	Description	Finish	List Price \$ Exc. GST
233304	K533D	Edge Mount Latch with Adjustable Strike	Chrome Plated	\$378.89

K174 Series - Mechanical



Cat. No.	Part No.	Description	Strike Adj.	Handle	Locking	Finish	List Price \$ Exc. GST	
233305	K17404	Edge Mount Latch with Adjustable Strike	10.3 to 18.3mm	Straight	No	Chrome Plated	\$296.02	
233306	K174B04			Offset			\$310.73	
233307	K174B014			Straight	Yes		\$339.90	
233308	K174C04						\$412.51	
233309	K174BC04			Offset			\$432.48	

K171 Series - Magnetic



Cat. No.	Part No.	Description	Handle	Locking	Finish	List Price \$ Exc. GST
233228	K17104	Edge Mount Latch with Strike	Straight	No	Chrome Plated	\$496.91
233311	K171B024		Offset			\$633.82
233312	K171BC08			Yes	Chrome Plated with Glass Reinforced Black Composite Handle	\$662.68
233313	K171B08			No	Chrome Plated	\$630.98

K172 Series - Mechanical/Magnetic



Cat. No.	Part No.	Description	Handle	Locking	Finish	List Price \$ Exc. GST
233315	K17206	Edge Mount Latch with 2 Way Adjustable Strike	Straight	No	Chrome Plated	\$459.11
233316	K172B06		Offset			\$475.92
233317	K172C06		Straight	Yes		\$532.37
233318	K172BC06		Offset			\$512.71



global brands - local service

www.actrol.com.au

**ACTROL**

Subject to change without notice

# Refrigeration Hardware



## Kason

### Cool Room Hinges

K1377 Series – Reversible



Cat. No.	Part No.	Description	Mounting	Offset	Finish	List Price \$ Exc. GST
233325	K1377S00004	Heavy Duty Stainless Steel Self Closing Strap Hinge	Reversible	Flush	Polished 316 Stainless Steel Flange, Strap & Cam Pins	\$662.37
233326	K1377S00008			29mm		\$662.37
233327	K1377S00018			45mm		\$662.37

K1245 Series – Reversible



Cat. No.	Part No.	Description	Mounting	Offset	Finish	List Price \$ Exc. GST
233240	K1245000028	Self Closing Cam Lift Hinge	Reversible	Flush	Chrome Plated	\$359.88
233241	K1245000040			28mm		\$323.93
233243	K1245000080			48mm		\$365.01

K1245 Series - Reversible



Cat. No.	Part No.	Description	Offset	Finish	List Price \$ Exc. GST
233246	K1245T00004	Self Closing Cam Rise Hinge	Flush	Tuffkote	\$291.40
233247	K1245T00016		28.6mm		\$291.40
	K1245T00020		31.8mm		P.O.A
233248	K1245T00064		47.6mm		\$301.24

K1248 Series – Reversible



Cat. No.	Part No.	Description	Mounting	Offset	Finish	List Price \$ Exc. GST
233329	K1248000004	Self Closing Spring Assisted Hinge	Reversible	Flush	Chrome Plated	\$291.40
233330	K1248000016			28.6mm		\$291.40
	K1248000020			31.8mm		P.O.A
233331	K1248000027			47.6mm		\$459.75

K1256 Series - Pacesetter Hinges



Cat. No.	Part No.	Description	Offset	Finish	List Price \$ Exc. GST
233222	K1255V00004C	Cam Rise Hinge	Flush	Chrome plated	\$310.40
233223	K1256V00004C		Flush extended strap 184.9mm		\$316.76
233221	K1255000003	Spring Kit			\$174.40



## CRH

AH-1400 Series

Mounting Holes: Drilled and countersunk for 6mm screws.



Cat. No.	Part No.	Description	Offset	Finish	List Price \$ Exc. GST
233334	AH-1450	Cool Room Hinge with Adjustable Offset	32 to 46mm	Chrome Plated	\$161.57
233335	AH-1460		42 to 60mm		\$161.57
233336	AH-1470		54 to 70mm		\$161.57

Cool Room Hinges

R1080 Series



Cat. No.	Part No.	Description	Mounting	Finish	List Price \$ Exc. GST
233204	R1080G	Rota-cam Cool Room Hinge	Left or Right	Mill Finish Die Cast Aluminium	\$136.40
233205	R1080W	Rota-cam Cool Room Hinge	Left or Right	White Powder Coat	\$136.39

global brands - local service

www.actrol.com.au

**ACTROL**

Subject to change without notice

148

Section 3

© 2015 Actrol Parts Pty Ltd ABN: 93 142 654 564

# Refrigeration Hardware



## CRH

### Hinges

HG01 Series



Cat. No.	Part No.	Description	Finish	List Price \$ Exc. GST
233203	HG01	Spring Loaded Self Rising Cool Room Hinge	Die Cast Aluminum	\$178.36



I34 Series -Adjustable Height

Cat. No.	Part No.	Description	Finish	List Price \$ Exc. GST
233333	I-34-I-01	Cam Rise Cool Room Hinge	Composite	\$79.52

### Fermod Series

Adjustable Cam Rise



Cat. No.	Part No.	Description	Door Thickness Including Gasket	Max. Weight	Finish	List Price \$ Exc. GST
233042	F473	Cam Rise Cool Room Hinge	48mm - 80mm	40kg per pair	Composite	\$124.86
233052	F583HP		76mm - 106mm	80kg per pair		\$265.46
233044	F491HP		88mm - 140mm	120kg per pair		\$329.48

3

### Heavy Duty Adjustable Cam Rise



Cat. No.	Part No.	Description	Offset	Max. Weight	Finish	List Price \$ Exc. GST
233030	F1573-40	Heavy Duty Cam Rise Cool Room Hinge	40mm	F1573 Series 80kg per pair	Composite with stainless steel pin	\$192.65
233031	F1573-47		47mm			\$192.65
233032	F1573-55		55mm	F1671 Series 120kg per pair		\$192.65
233034	F1671HP					\$237.75

### Hinge Packers

Cat. No.	Part No.	Description	Finish	List Price \$ Exc. GST
233043	F473SHIM	9mm suits F473	Composite	\$13.66
233053	F583SHIM	6mm suits F583		\$16.59
233045	F491SHIM	5mm suits F491HP		\$29.16
233035	F1671SHIM	5mm suits F1671HP		\$19.91

### Packers



Cat. No.	Part No.	Description	Contents	Finish	List Price \$ Exc. GST
233169	CRH-PHP10	Packer Handy Pack 10mm	4 x 40mm x 100mm 1 x 60mm x 150mm 1 x 80mm x 200mm	White Polyethylene	\$43.02
233170	CRH-PHP25	Packer Handy Pack 25mm			\$66.52



global brands - local service

www.actrol.com.au

**ACTROL**

Subject to change without notice

149

Section 3

© 2015 Actrol Parts Pty Ltd ABN: 93 142 654 564

# Refrigeration Hardware



## CRH

### Cabinet Hinges

Medium Duty Series



Cat. No.	Part No.	Description	Offset	Finish	List Price \$ Exc. GST
233016	CRH40X	Medium Duty Cabinet Hinge	19 to 25mm	Chrome Plated	\$125.70
233017	C-DHE		32mm		\$58.54
233018	C-DHC		Flush		\$37.77

Self Closing Rising Series



Cat. No.	Part No.	Description		Finish	List Price \$ Exc. GST
233199	P11ZLHMSPINK	Self Closing Hinge Packet of 2 Mild Steel Pin	Left Hand	Chrome Plated	\$66.31
233200	P11ZRHMSPIK		Right Hand		\$66.31
233193	P11ZLHSSPINK	Self Closing Hinge Packet of 2 Mild Stainless Steel Pin	Left Hand		\$81.40
233194	P11ZRHSSPINK	Self Closing Hinge Packet of 2 Stainless Steel Pin	Right Hand		\$81.40
233168	HP SILVER	Packing Strip- Nylon to Suit P11 Hinges			\$1.05
233191	P-12-LHS	Spring Loaded Self Rising Hinge Left Hand		Composite Body Stainless Steel Pin	\$31.50
233192	P-12-RHS	Spring Loaded Self Rising Hinge Right Hand			\$31.50
	P-12-HP	Hinge Packer 3mm			P.O.A

Edge Mount Self Closing Rising Series



Cat. No.	Part No.	Brand	Description	Offset	Finish	List Price \$ Exc. GST
233197	AH-1132	CRH	Edge Mount Self Closing Hinge	32mm	Polished Chrome	\$78.05
233220	K1367R016	Kason	Edge Mount Self Closing Hinge with Self Zytte Cam for self closing or to stay open at 120 Degree's	41mm	Die Cast Zinc Flange, Strap & Adjustment. Brass Cover, Chrome Plate	\$155.34

### Pivot Hinges



Cat. No.	Part No.	Brand	Description	Finish	List Price \$ Exc. GST
233020	R183	CRH	Pivot Hinge	Chrome Plated	\$33.57
233021	K7305-76	Kason		Stainless Steel	\$59.92

K1216 Series



Cat. No.	Part No.	Description	Finish	List Price \$ Exc. GST
233206	K1216	Spring Cartridge Hinge 29mm Offset	Die Cast Zinc, Stainless Steel Cover	\$62.74
233207	K1216SK	Spring Cartridge to suit K1216		\$40.92



## Kason

### Non Rise Hinge



Cat. No.	Part No.	Description	Finish	List Price \$ Exc. GST
233328	K1219	Adjustable Hinge with 22.2mm Offset. Offset Adjusts 3.2mm in-and-out to compensate for Gasket Compression	Die Cast Zinc Flange, Strap & Adjustment. Brass Cover, Chrome Plate	\$68.14

K1257 Series



Cat. No.	Part No.	Description	Finish	List Price \$ Exc. GST
233219	K1257008	Edgemount Spring Hinge	Die-cast zinc flange, strap & adjustment plate. Chrome plated brass cover, steel pin.	\$180.71



global brands - local service

www.actrol.com.au

**ACTROL**

Subject to change without notice

150

Section 3

© 2015 Actrol Parts Pty Ltd ABN: 93 142 654 564



# Refrigeration Hardware



## Kason

### K1556 Series

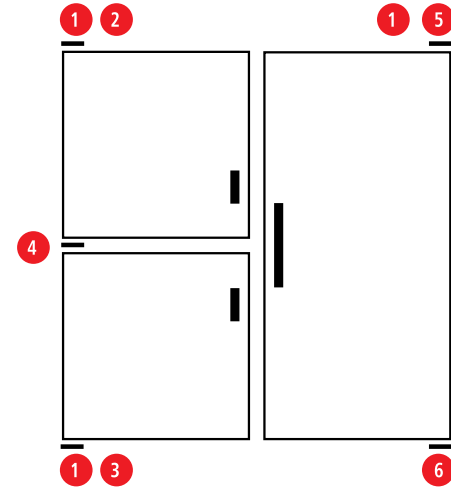
Kason Cartridge assembly. Standard clearance, 120° stop.  
Compression type wire spring. Closing force:

Standard cartridges for doors weighing upto 27kg.  
Cartridge. Die-cast Zamak case and upper arm.  
Nylon lower cam and pivot bearing. Chrome plated.



### ASSEMBLY WITH HORIZONTAL BRACKETS:

1. Cartridge Assembly
2. Top Cartridge Bracket, LH
3. Bottom Cartridge Bracket, LH
4. Double Pivot Bracket, LH
5. Top Cartridge Bracket, RH
6. Bottom Pivot Bracket



Cat. No.	Part No.	Description	Diagram Location	List Price \$ Exc. GST
233208	K155604	Spring Cartridge Assembly	1	\$123.67

### Brackets

Cat. No.	Part No.	Description	Position (Hand)		Diagram Location	Finish	List Price \$ Exc. GST
233209	K1556011	Cartridge Bracket	Top	Left	2	High Strength Steel, Chrome Plated	\$54.54
233210	K1556012			Right	5		\$54.54
233211	K1556013		Bottom	Left	3		\$54.54
233212	K1556014			Right			\$54.54
233213	K1556021	Pivot Bracket	Top	Left			\$54.54
233214	K1556022			Right			\$54.54
233215	K1556023		Bottom	Left			\$54.54
233216	K1556024			Right	6		\$54.54
233217	K1556035		Double	Left	4		\$73.56
233218	K1556036			Right			\$73.56



## CRH

### Door Handles

Cat. No.	Part No.	Description	Overall Length: mm	Finish	List Price \$ Exc. GST
233340	RH251	Pull Handle	251	Die Cast Chrome Plate with Black Plastic Cover	\$34.62
233341	RH260		310	Stainless Steel with Brass Base, Chrome Plated Finish	\$79.53
	K573		149.2	Die Cast Zinc, Chrome Plated Finish	P.O.A
233342	AH-1500	Pull Handle	290	Die Cast Zinc, Chrome Plated Finish	\$31.50
233347	H01	Pull Handle on S/S Backing Plate	225mm Handle on 300mm x 75mm Backing Plate	Stainless Steel	\$83.74
233358	I-147	Pull Handle	250	Composite Body with Silver Colour Insert	\$16.80
233359	I-149	Pull Handle	280	Composite Body with Aluminium Colour Insert	\$18.87



global brands - local service

www.actrol.com.au

**ACTROL**

Subject to change without notice

151

Section 3

© 2015 Actrol Parts Pty Ltd ABN: 93 142 654 564

# Refrigeration Hardware



## CRH

### Sliding Door Track



Cat. No.	Part No.	Description	Length: m	Roller Assemblies Series to Suit	List Price \$ Exc. GST
	D TRACK 3.25	Door Track	3.25	A120 & A130 (75mm Wheel)	P.O.A
	D TRACK 6.5		6.5		P.O.A
	J TRACK 3.25		3.25	A110 & A150 (50mm Wheel)	P.O.A
	J TRACK 6.5		6.5		P.O.A

### Hanging Roller Assemblies

A120 Series - Locking

Unique locking mechanism to prevent slipping.



Cat. No.	Part No.	Description	Finish	List Price \$ Exc. GST
237080	A120GLHLOCK-75	Large Hanging Roller Assembly with 75mm Delrin Wheel	Powder Coat Grey	\$174.17
237081	A120GRHLOCK-75			\$174.17
237082	A120WLHLOCK-75		Powder Coat Surf Mist	\$174.18
237083	A120WRHLOCK-75			\$174.18
	A120GLHLOCK-55	Large Hanging Roller Assembly with 55mm Delrin Wheel	Powder Coat Grey	P.O.A
	A120GRHLOCK-55			P.O.A
	A120WLHLOCK-55		Powder Coat Surf Mist	P.O.A
	A120WRHLOCK-55			P.O.A
	A120GLHLOCK-70	Large Hanging Roller Assembly with 70mm Delrin Wheel	Powder Coat Grey	P.O.A
237085	A120GRHLOCK-70			\$174.18
237086	A120WLHLOCK-70		Powder Coat Surf Mist	\$174.18
237087	A120WRHLOCK-70			\$174.18

#### A130 Series



Cat. No.	Part No.	Description	Finish	List Price \$ Exc. GST
237068	A130GLH	Large Hanging Double Wheel Roller Assembly with 75mm Delrin Wheel	Powder Coat Grey	\$230.85
237069	A130GRH			\$230.85
237070	A130WLH		Powder Surf Mist	\$230.85
237071	A130WRH		Powder Coat Surf Mist	\$230.85
237072	A130GLH-55	Double Wheel Hanging Roller Assembly with 55mm Delrin Wheel	Powder Coat Grey	\$230.85
237073	A130GRH-55			\$230.85
237074	A130WLH-55		Powder Coat Surf Mist	\$230.85
237075	A130WRH-55			\$230.85
237066	A134G-55	Double Wheel Bogey	Powder Coat Grey	\$182.57
237067	A134W-55		Powder Coat Surf Mist	\$182.57
237064	A134		Mill Finish	\$182.57

#### A150 Series



Cat. No.	Part No.	Description	Finish	List Price \$ Exc. GST
237092	A150GLH	Small Hanging Roller Assembly with 55mm Delrin Wheel	Powder Coat Grey	\$113.10
237093	A150GRH			\$113.10
237090	A150WLH		Powder Coat Surf Mist	\$113.09
237091	A150WRH			\$113.09



global brands - local service

www.actrol.com.au

**ACTROL**

Subject to change without notice

# Refrigeration Hardware



## CRH

### Hanging Roller Assemblies

#### W18 Series



Cat. No.	Part No.	Description		Finish	List Price \$ Exc. GST
<b>237094</b>	W18	Small Hanging Roller Assembly with 50mm Delrin Wheel	To Suit Commercial Track	Stainless Steel Hanger	<b>\$144.79</b>

#### SC4 Series



Cat. No.	Part No.	Description		Finish	List Price \$ Exc. GST
237096	SC4-050	Universal Hanging Roller Assembly suit J Track. 250kg Pair rated	Nylon 50mm Wheel	Aluminium bracket	\$110.17
237097	SC4-051	Roller complete with axle & nut			\$50.37
237112	SC4-052	Anti-lift pin			\$29.16
237095	W21	Eccentric Wheel Assembly 50mm Nylon Wheel			\$144.79

#### A110 Series



Cat. No.	Part No.	Description	Finish	List Price \$ Exc. GST
<b>237078</b>	A110G	Small Hanging Roller Assembly with 55mm Delrin Wheel	Powder Coat Grey	<b>\$113.10</b>
<b>237079</b>	A110W		Powder Coat Surf Mist	<b>\$113.09</b>



global brands - local service

[www.actrol.com.au](http://www.actrol.com.au)

**ACTROL**

Subject to change without notice

# Refrigeration Hardware



## CRH

### Wheels



Cat. No.	Part No.	Description	Dia: mm	ID: mm	Material	List Price \$ Exc. GST
237102	A113X	Delrin Wheel, Bearing & Circlip	55	12	Delrin & Stainless Steel	\$50.37
237098	A114X	Delrin Wheel, Bearing & Circlip. Square Track Moulding to suit D Track or Bondor Track			White Powder Coat	\$50.37
237099	A117	A113x Delrin Wheel, Bearing & Circlip with Zinc Plated Axle Assembly & Stainless Steel Anti-jump Bracket			Delrin & Stainless Steel, Zinc Bolt	\$90.23
237101	A129	Delrin Wheel and Stainless Steel Axle Assembly	75	14.5	Delrin Wheel, Stainless Steel Axle, Nuts & Washers	\$95.49
237108	A119		55			\$90.24
237107	A118X		70			\$95.46
237100	A127X	Delrin Wheel, Bearing & Circlip	75	14.5	Delrin & Stainless Steel	\$62.74
237106	A115X		70	15		\$62.73

### Track Mounted Stops

#### A220 Series



Cat. No.	Part No.	Description	Finish	List Price \$ Exc. GST
237220	A220GLH	Adjustable Offset Track Mounted Stop	Powder Coat Grey	\$70.28
237221	A220GRH			\$70.28
237222	A220WLH		Powder Coat Surf Mist	\$70.27
237223	A220WRH			\$70.27

#### A225 Series



Cat. No.	Part No.	Description	Finish	List Price \$ Exc. GST
237224	A225GLH	Inline Adjustable Track Mounted Stop	Mill Finish	\$70.28
237225	A225GRH			\$70.28
237226	A225WLH		White Powder Coat	\$70.27
237227	A225WRH			\$70.27

#### A230 Series



Cat. No.	Part No.	Description	Finish	List Price \$ Exc. GST
237228	A230GLH	Fixed Offset Track Mounted Stop	Powder Coat Grey	\$52.46
237229	A230GRH			\$52.46
237230	A230WLH		Powder Coat Surf Mist	\$52.46
237231	A230WRH			\$52.46

#### SO1 Series



Cat. No.	Part No.	Description	Finish	List Price \$ Exc. GST
237215	S01RH	J Track Mounted Door Stop. 50mm x 70mm	Mill Finish	\$50.15
237214	S01LH			\$50.15



global brands - local service

www.actrol.com.au

**ACTROL**

Subject to change without notice



# Refrigeration Hardware



## CRH

### Block Track Stops



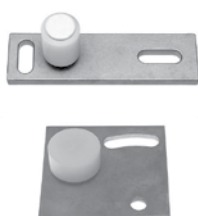
Cat. No.	Part No.	Description	Finish	List Price \$ Exc. GST
237216	S10-C	J Track Block Stop	Black Rubber	\$15.75
237217	S10-I	D Track Block Stop		\$25.18

### Floor Mounted Stops



Cat. No.	Part No.	Description	Finish	List Price \$ Exc. GST
237234	A240G	Large Floor Stop	Powder Coat Grey	\$51.42
237235	A240W		Powder Coat Surf Mist	\$51.42
237236	A250G	Small Floor Stop	Powder Coat Grey	\$42.81
237237	A250W		Powder Coat Surf Mist	\$42.81
237238	A242A	Replacement Rubber Stop includes S/S Bolt & Locknut 38mm x 26mm		\$9.87

### Floor Guides



Cat. No.	Part No.	Description	Finish	List Price \$ Exc. GST
237103	A280G	H Type Floor Guide	Powder Coat Grey	\$74.08
237104	A280W		Powder Coat Surf Mist	\$74.08
237105	A260	Square Floor Guide	Stainless Steel Base, Nylon Roller	\$74.50
237109	G02	S/S Silless Door Guide, 40mm Roller	Zinc Plated	\$83.09
237110	G03	Silless Door Guide, H Type		\$86.42
237111	G09	Silless Guide	304 S/S	\$77.64

### Cone & Locator Sets



Cat. No.	Part No.	Description	Finish	List Price \$ Exc. GST
237240	A210G	Cone & Locator Set	Powder Coat Grey	\$62.74
	A210W		Powder Coat Surf Mist	P.O.A

### Hasp and Release Pins



Cat. No.	Part No.	Description	Finish	List Price \$ Exc. GST
237242	A310G	Large Hasp	Powder Coat Grey	\$58.54
237243	A310W		Powder Coat Surf Mist	\$58.54
237244	A390G	Inside Release Pin and Swivel	Powder Coat Grey	\$66.94
237245	A390W		Powder Coat Surf Mist	\$73.44

### Hasp & Staple



Cat. No.	Part No.	Description	Finish	List Price \$ Exc. GST
237134	L07-75	Hasp & Staple with Mounting Block & 75mm Brass plated Rod	Chrome Plated	\$125.70
237131	L07-100	Hasp & Staple with Mounting Block & 100mm Brass plated Rod		\$125.70
237132	L07-150	Hasp & Staple with Mounting Block & 150mm Brass plated Rod		\$125.70
237133	L07-200	Hasp & Staple with Mounting Block & 200mm Brass plated Rod		\$125.70



global brands - local service

www.actrol.com.au

**ACTROL**

Subject to change without notice

155

Section 3

© 2015 Actrol Parts Pty Ltd ABN: 93 142 654 564

3

# Refrigeration Hardware



## CRH

### Sliding Door Locking Systems



Cat. No.	Part No.	Description		Material	List Price \$ Exc. GST
233278	A10W	Sliding Door Locking System	White	High pressure die cast zinc with nylon internal release	\$249.71
233279	RC01K	Roller Catch	75-150mm panel	Main body aluminium. Remainder high pressure die cast, nylon & stainless steel	\$230.62
233287	CRH-268-R-75K	Sliding Door Lock With Inside Release	75mm panel	Composite	\$409.21
233284	CRH-268-R-100K		100mm panel		\$451.18
233285	CRH268-R-150K		150mm panel		\$465.88

### Sliding Door Handles

#### Recessed Sliding Door Handles



Cat. No.	Part No.	Description	Overall Size: mm	Finish	List Price \$ Exc. GST
233344	A07W	Recessed Sliding Door Handle	120 x 220	White Powder Coat	\$67.15
	A07G			Grey Powder Coat	P.O.A
233345	SDHI BLACK			Black Nylon	\$16.59
233346	SDHI WHITE			White Nylon	\$16.59
233362	I-SKA-28K	Recessed Sliding Door Handle & Pocket		Composite Body with S/S Fastners.	\$65.06

#### Sliding Door Tube Handles - Aluminium



Cat. No.	Part No.	Description	Finish	List Price \$ Exc. GST
233343	A370G	Tube Handle End Bracket	Grey Powder Coat	\$50.37
233344	A370W		Powder coated	\$67.15
237257	A380G	Tube Handle Centre Bracket	Aluminium	\$35.66
237258	380W			\$41.78
233360	I-SKA-11	Edge Mount Coolroom Handle	Composite Body with Aluminium Handle	\$71.13



global brands - local service

[www.actrol.com.au](http://www.actrol.com.au)

**ACTROL**

Subject to change without notice

# Refrigeration Hardware



## Kason

### Strip Door Curtains

Kason Thermal Flex PVC strip door curtains are now available "off the shelf" for the first time in convenient packs with everything needed. It's the complete door curtain in a box that assembles in minutes. The standard strip door curtain pack is designed to suit a 900mm wide x 2100mm high clear door opening using 2mm x 100mm clear strips. The same curtain can be used for clear opening heights up to 2240mm. The overall size allowing for overlap on the sides and a height including the 50mm headpiece is 1015mm wide x 2285mm high and is available in both cool room and freezer grades. A significant portion of the refrigeration load in walk-in cool rooms and freezer rooms is attributed to air infiltration through open doorways. Installing strip curtains across doorways is a proven, effective means to drastically limit infiltration and provides significant energy cost savings.

**Over 120 stocked sizes available. All custom sizes made to order with quick turn around.**

#### Features:

- Complete door curtain in a box
- Assembles in minutes
- Strong, light weight aluminum track installs easily
- Patented mounting system prevents tear-out
- Fastener kit included
- Available "off the shelf" - no waiting
- Easiest mounting system on the market featuring pre-cleated, slide in strips for quick mounting and removal



Cat. No.	Part No.	Description	Application	Suits Clear Door Opening Size		Overall Size		List Price \$ Exc. GST
				Width: mm	Height: mm	Width: mm	Height: mm	
240058	KSDC10152285AC	Strip Door Curtain Kit	Cool Rooms	900	2240	1015	2285	\$466.08
240059	KSDC10152285AF		Freezer Rooms					\$518.68



[www.crh.com.au](http://www.crh.com.au)

Thermal Flex Strip Door Curtains for Coolroom & Freezer Rooms are now available in-store.  
Featuring the "No Tools easimount system" This is the only complete door curtain in a box that assembles in minutes.  
Over 120 sizes available.



# Refrigeration Hardware



## CRH

### Cool Room Shelving

#### Shelf Units - 1900mm High



Cat. No.	Part No.	Description	Shelf Size: mm	List Price \$ Exc. GST
237300	AC1824PEW4	455mm Deep 4 Tier Cool Room Shelf Unit	455 x 610	\$341.63
237301	AC1830PEW4		455 x 760	\$371.85
237302	AC1836PEW4		455 x 910	\$407.10
237303	AC1842PEW4		455 x 1060	\$449.90
237304	AC1848PEW4		455 x 1220	\$505.13
237305	AC1854PEW4		455 x 1370	\$543.08
237306	AC1860PEW4		455 x 1525	\$581.69
237307	AC1872PEW4		455 x 1825	\$658.07
237310	AC2424PEW4	610mm Deep 4 Tier Cool Room Shelf Unit	610 x 610	\$407.10
237311	AC2430PEW4		610 x 760	\$439.83
237312	AC2436PEW4		610 x 910	\$485.99
237313	AC2442PEW4		610 x 1060	\$543.08
237314	AC2448PEW4		610 x 1220	\$603.52
237315	AC2454PEW4		610 x 1370	\$649.68
237316	AC2460PEW4		610 x 1525	\$704.25
237317	AC2472PEW4		610 x 1825	\$818.39

#### Individual Shelves

Cat. No.	Part No.	Description	Shelf Size: mm	List Price \$ Exc. GST
237330	C1824PEW	455mm Deep Individual Shelf	455 x 610	\$49.10
237331	C1830PEW		455 x 760	\$56.66
237332	C1836PEW		455 x 910	\$65.47
237333	C1842PEW		455 x 1060	\$76.22
237334	C1848PEW		455 x 1220	\$90.02
237335	C1854PEW		455 x 1370	\$99.46
237336	C1860PEW		455 x 1525	\$109.12
237337	C1872PEW		455 x 1825	\$128.22
237340	C2424PEW	610mm Deep Individual Shelf	610 x 610	\$65.47
237341	C2430PEW		610 x 760	\$73.65
237342	C2436PEW		610 x 910	\$85.20
237343	C2442PEW		610 x 1060	\$99.46
237344	C2448PEW		610 x 1220	\$114.58
237345	C2454PEW		610 x 1370	\$126.11
237346	C2460PEW		610 x 1525	\$139.77
237347	C2472PEW		610 x 1825	\$168.29



global brands - local service

[www.actrol.com.au](http://www.actrol.com.au)

**ACTROL**

Subject to change without notice

158

Section 3

© 2015 Actrol Parts Pty Ltd ABN: 93 142 654 564



# Refrigeration Hardware



## CRH

### Door Bells



Cat. No.	Part No.	Description	Finish	List Price \$ Exc. GST
237247	ANM-001	95db Warning Bell with 150mm Keyway	Mild Steel with Chrome Plate	\$62.93
237248	ANM-002		Brass with Chrome Plate	\$90.23
237249	A375G	Bell Recess	Powder Coat Grey	\$29.17
237250	A375W		Powder Coat Surf Mist	\$33.37

### DorWatcher Alarm

The DorWatcher is a simple solution to stop refrigerated hinged & sliding doors being left open for long periods of time. Battery powered with a simple install and built in battery fault monitor.



Cat. No.	Part No.	Description	List Price \$ Exc. GST
237254	DW304	DorWatcher Alarm Kit	\$431.68

### Personnel Safety Alarms



Cat. No.	Part No.	Description	Kit Contents	List Price \$ Exc. GST
237251	CRH-PSA01	Personnel Safety Alarm Kit	Siren & Strobe Weatherproof Box Illuminated Emergency Push Button Power Supply AC Adapter Lumitac 'PUSH' Sticker	\$293.57
237252	CRH-PSA02		Siren & Strobe Weatherproof Box Illuminated Emergency Push Button Power Supply AC Adapter Lumitac 'PUSH' Sticker	\$377.51
237253	CRH-PSA03		Siren & Strobe Weather Proof Controller & Push Button Power Supply AC Adapter Lumitac 'PUSH' Sticker	\$534.04



## Kason

### Pressure Relief Valves



Cat. No.	Part No.	Description	Mounting Hole Size: mm	List Price \$ Exc. GST
233350	CRH-500	Pressure Relief Valve with Heater 70-150mm	100	\$209.63
233351	CRH-500A	Extension sleeve 150 to 250mm panel.		\$83.74
233352	CRH-1000 150-250	Freezer & Blast Freezer Heated Pressure Relief Valve Suitable for 150mm-250mm Panel		\$881.34



global brands - local service

www.actrol.com.au

**ACTROL**

Subject to change without notice

# Wire Cable Suspension Systems



## Rize

Cable Locks and Galvanised Cable are the fast and versatile way to hang static loads . Studies have shown installation time can be reduced up to 6 times compared to traditional installs using threaded rod, chain, hanger straps or other cable systems.

The Rize Kwik-Loc system is light weight and a major safety improvement in terms of handling and installing on site and reduces OH&S problems when installing in aerial situations when compared to heavy traditional fittings.

All Rize Kwik-Loc cable lock kits incorporate a length of pre-cut cable with a swaged end for maximum speed, efficiency and safety. Kwik-Loc cable locks, galvanised wire rope and accessories are available in numerous configurations for attachment to virtually any type of building structure.



## Looped Cable Kits

Cat. No.	Part No.	Description	Cable Size: mm	Safe Working Load: kg	Length: m	Kwik-Loc Included	Kits Per Packet	List Price \$ Exc. GST
234010	30128	Looped Cable Kit	2.5	68	1.5	KL150	1	\$19.72
234012	30129				4.5			\$24.73
234014	30133				6.1			\$34.84
234020	30130		3.2	120	1.5	\$17.52		
234022	30131				4.5	\$22.55		
234024	30132				7.6	\$32.67		
234030	KL200-1M-4.8		4.8	290	1	KL200		\$35.46
234031	KL200-2M-4.8				2			\$39.87
234032	KL200-3M-4.8				3			\$44.23
234033	KL200-4M-4.8				4			\$48.84
234034	KL200-5M-4.8				5			\$53.25
234035	KL200-6M-4.8				6			\$57.61
234036	KL200-7M-4.8				7			\$62.02
234037	KL200-8M-4.8				8			\$66.58
234038	KL200-9M-4.8				9			\$70.98
234039	KL200-10M-4.8				10			\$75.35

Safe Working Load @ 5:1 Safety Factor

## Y Snap Hook Kits

A snap hook system can be used for clipping onto cable brackets & trays. Simply loop the end of the cable through your fixing point & secure with the KL150 Kwik-Loc.

Cat. No.	Part No.	Description	Cable Size: mm	Safe Working Load: kg	Length: m	Leg Length: mm	Kwik-Loc Included	Kits Per Packet	List Price \$ Exc. GST
234044	30186	Y Snap Cable Kit	2.5	68	1.5	450	KL150	2	\$57.19
234046	30192				3				\$60.67
234048	30266				4.5				\$65.07
234054	30020				2	700	KL200		\$57.19

Safe Working Load @ 5:1 Safety Factor



global brands - local service

www.actrol.com.au

**ACTROL**

Subject to change without notice

160

Section 3

© 2015 Actrol Parts Pty Ltd ABN: 93 142 654 564



# Wire Cable Suspension Systems

## Rize

### Cable Rolls

Galvanized Steel Cable supplied by the roll.



Cat. No.	Part No.	Description	Cable Size		Roll Length: m	List Price \$ Exc. GST
			mm	inch		
234061	30381	Galvanised Steel Cable	2.5	3/32"	152.4	\$264.17
234062	30382		3.2	1/8"		\$390.38
234063	30383		4.8	3/16"	76.2	\$442.53

### Kwik-Locs

The KL100 was introduced to work on most light hanging applications, cable trays, ducting, signs, evaporators, to name a few. The KL150 is significantly smaller in size and with a lower load limit than the KL200. The KL150 can be used to hang heavy cable baskets, lighting, signs, fencing & vine support. KL200 is the largest of the Kwik-Loc series with the highest safe working load limit. The KL200 is perfect for hanging heavy cable trays, suspended ceilings etc.



Cat. No.	Part No.	Description	Pack Qty	List Price \$ Exc. GST
234064	30056	KL100 Kwik-Loc	4	\$23.90
234066	30002		10	\$63.52
234074	30055	KL150 Kwik-Loc	4	\$38.31
234076	30003		25	\$240.99
234086	30004	KL200 Kwik-Loc	10	\$159.91
	30344	KL600 Kwik-Loc	1	P.O.A

### Safe Working Loads

Kwik-Loc	Suits Cable Size		Safe Working Load: kg	
	mm	inch	5:1 Safety	4:1 Safety
KL100	2.5	3/32"	68	85
KL150	2.5	3/32"	68	85
	3.2	1/8"	102	127
KL200	3.2	1/8"	113	141
	4.8	3/16"	290	362
KL600	6	1/4"	498	622



[www.crh.com.au](http://www.crh.com.au)

3

# Wire Cable Suspension Systems

Kwik-Loc cable Locks are the fast & versatile way to hang static loads. Install time can be reduced up to 6 times compared to traditional installs using rod, chain, hanger straps or other cable systems. Applications- Mechanical, Ductwork, Electrical.



# Wire Cable Suspension Systems



## Rize

### Zip-Clips

The Zip-Clip cable lock combined with cable is an efficient method of hanging objects. The Zip-Clip fits inside strut and has a spring loaded pawl which allows entry and passage of cable through the cable lock. Zip-Clips are suitable for use with single or multi-tiered trapeze systems and in applications supporting such items as cable trays, baskets, water and gas pipes, and chilled beams.



Cat. No.	Part No.	Description	Cable Size: mm	Safe Working Load: kg	Pack Qty	List Price \$ Exc. GST
234107	30040	Zip Clip	3.2	102	4	\$64.40

Safe Working Load @ 5:1 Safety Factor

### KV100 Bracket

The KV bracket enhances the Rize Kwik-Loc suspension system by the addition of an integral bracket, which fastens the cable lock to the duct with sheet metal screws. Once the KV bracket is attached to the equipment, the wire rope "drop" is passed into the entry hole at the top of the bracket, through the cable lock, and out the exit hole at the bottom. The locking teeth inside the cable lock engage the wire rope and secure the ductwork in place.



Cat. No.	Part No.	Description	Cable Size: mm	Safe Working Load: kg	Pack Qty	List Price \$ Exc. GST
234106	30298	KV100 Bracket	3.2	68	4	\$47.95

### Eye Bolt & Nut

Eye Bolt & Nut with 3/8" thread. Thread length 38mm. Zinc Plated Low Carbon Steel.



Cat. No.	Part No.	Description	Safe Working Load: kg	Pack Qty	List Price \$ Exc. GST
234102	30296	3/8 Eye Bolt	65	4	\$53.25

### Hanger Plates

45 Degree Hanger Plates



Cat. No.	Part No.	Description	Pack Qty	List Price \$ Exc. GST
234104	HP45K	Hanger Plate	4	\$47.75

### Corner Protectors

Helps stabilize cable on sharp corners

Cat. No.	Part No.	Description	Pack Qty	List Price \$ Exc. GST
234105	30086	Corner Protector	4	\$14.47

### Con-Lock

Suspension systems typically use threaded rod with washers and nuts to construct a support structure. Sizing, cutting and assembling the rods to the complementary parts and fastening them to an anchor point can be very time consuming. The Con-Lock system is designed for the suspension of all static loads into all concrete types including slagged, cracked, slab and even hollow pot. The Con-Lock is designed to use a 1/4" or 6mm drill bit. Tapped into place with a standard hammer, no claw back of the anchor is needed for installation. There is no need for any other tools.

With a working load limit of 50kgs the Con-Lock can be used for most electrical installations.



Cat. No.	Part No.	Description	Pack Qty	List Price \$ Exc. GST
234103	30174	Con-Lock	4	\$27.36



global brands - local service

www.actrol.com.au

**ACTROL**

Subject to change without notice

162

Section 3

© 2015 Actrol Parts Pty Ltd ABN: 93 142 654 564

# Wire Cable Suspension Systems



## Rize

### Kwik-Twist

When preparing to suspend equipment, ductwork or mount accessories, threaded anchor points are often required. Kwik-Twists from Rize are side or vertically mounted fasteners that provide attachment points for steel threaded rods and other assemblies. There are three variations of Kwik-Twists; one for penetrating and threading into steel, one for wood and one for concrete. Each Kwik-Twist has a  $\frac{9}{8}$ "-19 threaded hole in the fastener's hex shaped head. Side mounted Kwik-Twists have the threaded hole perpendicular to the fastener shaft and passing through the fastener head. Vertically mounted Kwik-Twists have the threaded hole parallel to the fastener shaft and as deep as the fastener head.

#### Features:

- No pilot hole is needed for wood or steel Kwik-Twists; a  $\frac{1}{4}$ " pilot hole is required for concrete
- All fasteners are zinc plated for corrosion resistance



Cat. No.	Part No.	Description	Mounting	For Use In	Pilot Hole	Max. Static Load: kg	Pack Qty	List Price \$ Exc. GST
234092	30293	Kwik Twist Hanger	Horizontal	Concrete	1¼"	72	4	\$33.08
234093	30138		Vertical					\$33.08
234094	30294		Horizontal	Wood	None	90		\$32.67
234095	30139		Vertical					\$32.67
234096	30140		Horizontal	Steel				\$31.32
234097	30295		Vertical					\$31.32

### Rize Tensioning Tool

As in all aspects of construction there may be times when you need to put a little more tension on the cable than is possible with just your hands.

Rize has available a tensioning tool for these applications. Made of steel and meant to last, the tensioning tool takes all sizes of Kwik-Loc and up to 3/16 inch cable. The tensioning tool is designed to apply tension of up to 600 lbs on cable that is terminated by a Kwik-Loc. It works by holding the Kwik-Loc body and pulling the cable through the Kwik-Loc using a cam and anvil. The powerful lever action will tension and re-tension the cable in seconds. For use on all sizes of Kwik-Locs.



Cat. No.	Part No.	Description	List Price \$ Exc. GST
354597	30341	Rize Tensioning Tool	\$174.17



global brands - local service

[www.actrol.com.au](http://www.actrol.com.au)

**ACTROL**

Subject to change without notice

163

Section 3

© 2015 Actrol Parts Pty Ltd ABN: 93 142 654 564