

# Pumps

## Mini Condensate Pumps



### Sauermann SI30 & SI33

The Sauermann SI30 & SI33 pumps are specifically designed to be installed on:

- Wall mounted units
- Ceiling suspended units
- Fan coil unit
- Ducted units

These pumps are a two piece kit with the pump and float detection sensor interconnected via the click fit sensor cable and suitable drain hose, depending on the installation requirements.

#### Features

- 90°C Thermal protection
- 34dBA at 1m - SI33
- 20dBA at 1m - SI30



Cat. No.	Model No.	Description	Nominal Flow Rate	Max Suction Lift	Max Discharge Head	List Price \$ Exc. GST
550057	SI-30	Condensate Pump	20l/hr	3m	10m	\$441.89
550065	SI-33		30l/hr	4m	13m	\$475.55

## Delta Pack

The Sauermann Delta Pack is a convenient complete ready to install 'quick fit kit' for wall mounted units. The pump is mounted on a anti-vibration bracket inside the trunking elbow, inline with the drain reservoir. Suitable for either side of the unit. The kit comes with pump & integrated detection, anti-vibrating reversible mounting bracket, electrical quick mount power cable, 15mm connecting rubber drain hose, trunking and rubber joint.

#### Features

- 90°C Thermal protection



Cat. No.	Model No.	Description	Nominal Flow Rate	Max Discharge Head	List Price \$ Exc. GST
550055	DELTA PACK	Condensate Pump Kit	20l/hr	6m	\$542.26

## SI1082

The Sauermann SI1082 is a monobloc pump with integrated float detection. The pump is mounted onto the included anti-vibration reversible fastening bracket which can be located inside most brands of trunking and is designed to be installed on:

- Wall split systems
- Ceiling suspended units
- Fan coil units
- Floor mounted units
- Ducted units

Pump also comes with quick fit electrical power cable, 15mm & 35mm rubber inlet connecting drain hose and a 4mm vent tube.

#### Features

- 90°C Thermal protection



Cat. No.	Model No.	Description	Nominal Flow Rate	Max Discharge Head	List Price \$ Exc. GST
550045	SI-1082	Condensate Pump	8l/hr	6m	\$440.30



global brands - local service

Subject to change without notice

351  
Section 7

www.actrol.com.au

**ACTROL**

© 2015 Actrol Parts Pty Ltd ABN: 93 142 654 564

7

# Pumps

## Mini Condensate Pumps



### Aspen Mini & Maxi Orange

The Aspen Mini Orange & Maxi Orange pumps are designed to be installed:

- Above the false ceiling where possible
- Behind wall mounted evaporators
- In plastic conduit

Connecting the drain hose to the reservoir and placing the pump drive unit within the evaporator, condensate water can be pumped away to a suitable drain. Within the Orange kit there are two reservoirs to choose from, which must sit flat and horizontal. One allows you to connect directly to the drain hose of the evaporator and the second reservoir can be placed directly into a condensate tray.



Cat. No.	Part No.	Description	Max Flow Rate	Max Discharge Head	List Price \$ Exc. GST
550153	FP2212	Mini Orange Condensate Pump	14l/hr	10m	\$435.18
550155	FP2210	Maxi Orange Condensate Pump	37l/hr	20m	\$500.73

### Mini & Maxi Lime

The Aspen Mini Lime & Maxi Lime pumps are completely unique, in both their design and installation advantages. The pumps are clipped directly onto the reservoir so there is minimal suction lift. By connecting the drain hose to the reservoir of the pump unit, condensate water can be pumped away to a suitable drain. The pumps fit securely into a specifically designed elbow that holds them horizontally to ensure reliable operation. The pump and elbow are reversible therefore they can be installed easily on either side of an evaporator unit.



Cat. No.	Part No.	Description	Max Flow Rate	Max Discharge Head	List Price \$ Exc. GST
550154	FP3312	Mini Lime Condensate Pump	14l/hr	10m	\$609.96
550156	FP2213	Maxi Lime Condensate Pump	37l/hr	20m	\$719.24

### Mini Blanc

Designed to be fitted below the indoor unit, the Mini Blanc offers an extremely easy to install mini pump for all wall and ceiling suspended indoor units. Suitable for both commercial and domestic installations, the quick fit pump is simply screwed to the wall. It is easy to access therefore low maintenance. The Mini Blanc is ultra quiet in operation as well as discreet, with a slim profile of 55mm from the wall.



Cat. No.	Part No.	Description	Max Flow Rate	Max Discharge Head	List Price \$ Exc. GST
550151	FP1080	Mini Blanc Condensate Pump	12l/hr	10m	\$435.18

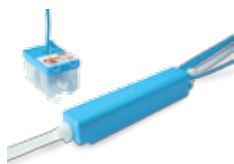
### Mini Aqua

The Mini Aqua has been designed to give the installation flexibility, where the latest generation of A/C units are becoming even smaller.

The Mini Aqua is designed to be installed:

- Within wall mounted evaporators
- In plastic conduit

By connecting the drain hose to the reservoir and placing the pump drive unit within the evaporator or conduit, condensate water can be pumped to a height of 8 metres. Using the proven functionality of Aspen's other mini pumps, the Mini Aqua is also incredibly slim in size. Measuring only 28mm in height and 28mm in depth, it is one of the smallest condensate pumps in the world.



Cat. No.	Part No.	Description	Max Flow Rate	Max Discharge Head	List Price \$ Exc. GST
550152	FP2406	Mini Aqua Condensate Pump	14l/hr	8m	\$435.18



global brands - local service

[www.actrol.com.au](http://www.actrol.com.au)

**ACTROL**

Subject to change without notice

# Pumps

## Mini Condensate Pumps

BlueDiamond™

### Blue Diamond

The Blue Diamond is a heavy duty rotary diaphragm condensate pump. The rubber construction of the rotary diaphragm copes with sludge, slime, grit and even running dry. The pump is whisper quiet and yet has high flow rates. The pump comes complete with a reservoir sensor. This pump is ideal for larger and/or problematic installations.

#### Features

- Self priming
- Ultra reliable
- Reduced service costs
- Slimline
- Blue Diamond has the performance to overcome installation difficulties - just plug and play, fit and forget.
- Kit with in & out tubing & connections, anti vibration feet & mountings, integral volt free alarm module & 3 core power cord (2m)
- Connect the drip tray to the pump reservoir. The hi-low solid state level sensors automatically switch the pump on/off to remove the condensate.
- The alarm shuts off the A/C in fault mode and restarts the A/C when the condensate has cleared.



Cat. No.	Part No.	Description	Max Flow Rate	Max Head	Max Suction Lift	List Price \$ Exc. GST
550080	MegaBlue	Condensate Pump	50l/hr	20m	7m	\$874.21
550081	MaxiBlue		14l/hr	8m	8m	\$700.15
550082	MiniBlue		8l/hr	8m	5m	\$548.82

Little Giant™

### Little Giant

#### EC-400 Condensate Pump

Removes condensate from wall or ceiling mounted air conditioners. The EC-400 consists of three components: control unit, detection reservoir and pump. All three components can be placed inside the air handler, or any of the three can be placed outside the air handler. The pump and control unit can be placed up to one metre above the air handler. A three position float detection system assures reliable On, Off and Safety Alarm functions. The EC-400 is suitable for use with split air conditioners up to 10 kW.



Cat. No.	Part No.	Description	Max Flow	Max Head	Max Suction Lift	List Price \$ Exc. GST
550031	EC-400	Condensate Pump	18l/h	14m	1m	\$811.87



# Pumps



## Mini Condensate Pumps

### Refco

#### Gobi

The Gobi is a condensate discharge module designed to be fitted below modern wall mounted air conditioners.

#### Features

- Electronic Energy Control System (EECS) with alarm circuit
- Quick, simple trouble free installation
- Thermal protection
- Built-in non-return valves
- CE and UL marked
- Soft start with EECS
- Aesthetic design blends in naturally into its surroundings
- Amazingly quiet
- Fits all high-wall-mount air conditioners

#### Specifications

- Power supply: 120/240 V, 50/60 Hz auto sensing
- Alarm relay: 5A, 30 VDC, 250 VAC break on fault
- Maximum discharge head: 20m vertical, 100m horizontal
- Ambient temperature: 0C - 40C
- Discharge tube: 6 mm ID
- Power consumption: 16W maximum, 0.25A when idle
- Capacity: 12l/h maximum
- Maximum suction head: 1m
- Material: Flame retardant ABS - UL94 5 VA
- Dimensions: 286 x 61 x 53 mm



Cat. No.	Part No.	Description	Max Flow Rate	Max Discharge Head	List Price \$ Exc. GST
550100	4678538	Gobi Condensate Pump	12l/hr	15m	\$653.98

### Karoo

The Karoo drain pan pump is a submersible condensate removal pump designed to automatically remove condensate water from refrigerated cases, dehumidifiers, fan coils and air conditioning systems.

#### Features

- Electronic Energy Control System (EECS) with alarm circuit
- CE and UL marked
- Amazingly quiet
- Filter and non-return valves built in
- All electrical components safely encapsulated against moisture ingress
- Soft start with "EECS"
- Submersible
- Powerful and compact
- No mechanical floats to stick

#### Specifications

- CE & UL markedCapacity: 12l/h maximum
- Maximum suction head: 1m
- Ambient temp: 0C - 40C
- Material: Flame retardant ABS - UL94 5 VA
- Discharge tube: 6mm ID
- Dimensions: 160 x 43 x 34 mm
- CE & UL markedPower supply: 120/240 V, 50/60 Hz Auto sensing
- Maximum discharge head: 20m vertical, 100m horizontal
- CE & UL markedPower consumption: 16W maximum, 0.25W when idle
- CE & UL markedAlarm relay: 5A, 30VDC, 250VAC break on fault



Cat. No.	Part No.	Description	Max Flow Rate	Max Discharge Head	List Price \$ Exc. GST
550102	4678512	Karoo Condensate Pump	12l/hr	6m	\$354.53



global brands - local service

www.actrol.com.au

**ACTROL**

Subject to change without notice

354  
Section 7

© 2015 Actrol Parts Pty Ltd ABN: 93 142 654 564

# Pumps

## Peristaltic Pumps



### Sauermann

#### PE5200

The Sauermann PE5200 pump is suitable for units up to 8kW. Specifically designed for the following:

- Wall mounted air conditioners
- Ceiling mounted units
- Ducted air conditioning units

This model is a compact in size and operates via a float detector. It features a high 12m discharge head height and is very quiet in operation. It is IP65 rated. It offers a high level NC alarm contact. Replacement tubes and heads make maintenance/ replacement easy (no need to re-wire the base unit – simple fit and clip in the new motor) Supplied with an easy fix wall bracket.



Cat. No.	Model No.	Description	Nom. Flow Rate	Max Suction Lift	Max Discharge Head	List Price \$ Exc. GST
550052	PE-5200	Peristaltic Condensate Pump	6l/hr	2m	12m	\$835.81

#### PE5100

The Sauermann PE5100 pump is suitable for units up to 8kW. Specifically designed for the following:

- Wall mounted air conditioners
- Ceiling mounted units
- Ducted air conditioning units

This model is a compact in size and operates of via two sensors which measures 6C delta T temperature differential. It features a high 12m discharge head height and is very quiet in operation. It is IP65 rated. Replacement tubes and heads make maintenance / replacement easy (no need to re-wire the base unit – simple fit and clip in the new motor) Supplied with an easy fix wall bracket.



Cat. No.	Model No.	Description	Nom. Flow Rate	Max Suction Lift	Max Discharge Head	List Price \$ Exc. GST
550048	PE-5100	Peristaltic Condensate Pump	6l/hr	2m	12m	\$856.17

#### PE5000

The Sauermann PE5000 pump is suitable for units up to 8kW. Specifically designed for the following:

- Wall mounted air conditioners
- Ceiling mounted units
- Ducted air conditioning units

This model is a compact in size and operates of a cooling signal. It features a high 12m discharge head height and is very quiet in operation. It is IP65 rated. Replacement tubes and heads make maintenance / replacement easy (no need to re-wire the base unit – simple fit and clip in the new motor) Supplied with an easy fix wall bracket.



Cat. No.	Model No.	Description	Nom. Flow Rate	Max Suction Lift	Max Discharge Head	List Price \$ Exc. GST
550042	PE-5000	Peristaltic Condensate Pump	6l/hr	2m	12m	\$863.74

#### PE6250

The Sauermann PE6250 pump is suitable for the following;

- Refrigerated display and cold store cabinets
- Ceiling mounted units
- Evaporators
- Ducted air conditioning units

This model offers a high flow rate of 25 l/h and operates float control switch and is IP65 rated. It features a high 10m discharge head height and maximum 2m suction lift. Replacement tubes make maintenance easy. Supplied with an easy fix wall bracket.



Cat. No.	Model No.	Description	Nom. Flow Rate	Max Suction Lift	Max Discharge Head	List Price \$ Exc. GST
550053	PE-6250	Peristaltic Condensate Pump	25l/hr	2m	10m	\$1,367.72



global brands - local service

www.actrol.com.au

**ACTROL**

Subject to change without notice

355  
Section 7

© 2015 Actrol Parts Pty Ltd ABN: 93 142 654 564

7

# Pumps

## Peristaltic Pumps



### Aspen Universal Peristaltic

The Universal peristaltic pump operates with two temperature sensors. These allow the pump to detect and be triggered by a change in air temperature, making this pump suitable for many applications.

The Universal is designed to fit in ceiling voids and lift the condensate water from wall mounted machines where a gravity drain is too obtrusive. It can also be used on cassettes fitted with an internal lift pump. The pump can be mounted remotely as it is self-priming to a height of 3 metres and will pump 6.25 litres of water per hour against a maximum head of 12 metres. The pump runs constantly while the air conditioning system is cooling – when the cooling switches off a 3 minute timer ensures that the condensate tray is emptied before the pump switches off.

The Universal pump is a peristaltic rotary type - which means that it is quiet in operation, very reliable and will run dry without fear of damage or embarrassing noise. Unlike other pumps using either mechanical or electrical conductivity sensors, the Universal does not suffer from corrosion or contamination problems.

#### Features

- Senses 5C differential across the evaporating coil
- 12 metres discharge head
- No loud sound from dry running
- Pumps water, fibrously contaminated water and air
- Only requires live/neutral supply and 2 sensors either side of the evaporating coil – one 'air on' and one 'air off'
- Operates only on cooling
- 3 minute timer overrun
- Manual test switch
- Push-in plug
- Self-priming lifts 3 metres
- No siphoning back
- Fire retardant plastics
- Wall-mounted bracket

#### Specifications

- Dimensions: 115mm(H) x 135mm(W) x 77mm(D)
- Pump rating: 0.2A, 230V AC
- Inlet /outlet size: 6mm
- Connecting cable: 3 metres



Cat. No.	Part No.	Description	Max Flow Rate	Max Discharge Head	List Price \$ Exc. GST
550161	FP2082	Universal Peristaltic Condensate Pump	6.25l/hr	12m	\$819.34



### Little Giant VC Series

For removal of condensate from air conditioners, condensing boilers, refrigerated display cabinets, and dehumidifiers.

#### Features

- Fully automatic; start, stop, safety switch
- Check valve outlet: 9.5 mm, for 9.5 mm ID tubing
- 1/30 HP motor
- Operating point: 4 m: 70 l/h
- IP 20
- ABS tank, motor cover, and volute
- Thermally protected motor
- CE, TUV and BAU approved
- Stainless steel shaft

### VCMA-20S

#### Features

- 2.0L tank capacity
- Removable 9.5 mm barbed check valve
- 3 inlet drain holes

Cat. No.	Part No.	Description	Capacity: l/m					Amps	List Price \$ Exc. GST
			0.5m Water Head	1m Water Head	1.5m Water Head	3m Water Head	4.3m Water Head		
550032	VCMA-20S	Condensate Pump	4.8	4.7	4.5	3.3	0	0.6	\$570.46



### VCC-20S

#### Features

- Low profile for limited space applications
- Removable 9.5 mm barbed check valve
- 1.0L tank capacity

Cat. No.	Part No.	Description	Capacity: l/m					Amps	List Price \$ Exc. GST
			0.5m Water Head	1m Water Head	1.5m Water Head	3m Water Head	4.3m Water Head		
550033	VCC-20-S	Condensate Pump	4.8	4.7	4.5	3.3	0	0.6	\$660.06



global brands - local service

www.actrol.com.au

**ACTROL**

Subject to change without notice

356  
Section 7

© 2015 Actrol Parts Pty Ltd ABN: 93 142 654 564



# Pumps

## Tank Pumps



### Sauermann

#### SI60

The Sauermann SI60 is a monbloc pump with built in tank. It is an ergonomic and compact tank pump which offers condensate inlet on the top or on the front side. The patented detection system is not sensitive to clogging, whatever the environment. It has a plug in power cord and easily accessible tank and is designed to be installed on floor mounted units, ceiling suspended units, ducted units and fan coil units.



##### Features

- 90°C Thermal protection
- 38dBA at 1m

Cat. No.	Model No.	Description	Nom. Flow Rate	Max Discharge Head	Tank Size	List Price \$ Exc. GST
550062	SI-60	Condensate Pump	20l/hr	10m	0.5l	\$866.93

#### SI82

The Sauermann SI82 pump is specifically designed to be installed on:

- Refrigerated display cabinets
- Cold store cabinets
- Dehumidifiers
- Ducted units
- Multi cassette unit
- Column air conditioning units
- Gas condensing boilers

This model is a single piece 2 litre tank unit, and is built to last. It has high performance and tolerates charged, high temperature and mildly acidic condensates from refrigeration and air conditioning systems. Can be floor mounted attached to a wall or hung from a ceiling. Easily removable tank and reversible pump, for left or right entry with a quick fit electrical cable.



##### Features: 105°C Thermal protection

Cat. No.	Model No.	Description	Nom. Flow Rate	Max Discharge Head	Tank Size	List Price \$ Exc. GST
550056	SI-82	Condensate Pump	500l/hr	5m	2l	\$460.70

#### SI1805

The Sauermann SI1805 pump has a compact tray and is specifically designed to be installed on:

- Refrigerated display cabinets
- Cold store cabinets
- Dehumidifiers
- Ducted units
- Multi cassette unit
- Column air conditioning units
- Gas condensing boilers

This model is a single piece 0.5 litre tank unit, and is built to last. It has high performance and tolerates charged, high temperature and mildly acidic condensates from refrigeration and air conditioning systems. Can be floor mounted attached to a wall or hung from a ceiling. Easily removable tank and reversible pump, for left or right entry.



##### Features: 130°C Thermal protection

Cat. No.	Model No.	Description	Nom. Flow Rate	Max Discharge Head	Tank Size	List Price \$ Exc. GST
550038	SI-1805	Condensate Pump	500l/hr	5m	0.5l	\$472.94

#### SI1830

The Sauermann SI1830 pump is an IPX4 rated pump, which has been specifically designed for high resistance acid and temperature applications but can be installed on:

- Oil condensing boilers
- Gas condensing boilers
- Gas furnaces
- Refrigerated display cabinets
- Cold store cabinets
- Evaporators
- Multi cassette unit
- Column air conditioning units

This model is a single piece 0.5 litre tank unit, which can be installed internally or externally to the system. It is a semi submersible design and has a waterproof rating of IPX4. It also has a low sound level and is compact in size.



##### Features: 120°C Thermal protection

Cat. No.	Model No.	Description	Nom. Flow Rate	Max Discharge Head	Tank Size	List Price \$ Exc. GST
550064	SI-1830	Condensate Pump	400l/hr	3.7m	0.5l	\$521.85



global brands - local service

www.actrol.com.au

**ACTROL**

Subject to change without notice

# Pumps

## Tank Pumps



## Sauermann

### SI1822

The Sauermann SI1822 pump has a large volume tank of 3.8 litre it has been specifically designed for large volume and higher than standard discharge height (up to 5.8m). This model can be used on the following applications:

- Refrigerated display cabinets
- Cold store cabinets
- Multi cassette units
- Gas furnaces
- Evaporators
- Column air conditioning units
- Ducted units
- Gas condensing boilers

This model has high performance of up to 380 l/h and can evacuate heavy, charged, high temperature and acidic (pH >3.4) condensates from refrigeration or air conditioning systems.



**Features:** 105°C Thermal protection

Cat. No.	Model No.	Description	Nom. Flow Rate	Max Discharge Head	Tank Size	List Price \$ Exc. GST
550066	SI-1822	Condensate Pump	380l/hr	5.8m	3.8l	\$492.39

### SI1850

The Sauermann SI1850 pump has a large volume tank of 3.8 litres and it has been specifically designed for large volume and higher than standard discharge heights (up to 10m). This model can be used on the following applications;

- Refrigerated display cabinets
- Cold store cabinets
- Multi cassette units
- Gas furnaces
- Evaporators
- Column air conditioning units
- Ducted units
- Gas condensing boilers

This model has the highest performance of flow and discharge height (100 l/h and 10m respectively) and is designed to evacuate heavy, charged, high temperature and acidic (pH >3.4) condensates from refrigeration or air conditioning systems.



**Features:** 135°C Thermal protection

Cat. No.	Model No.	Description	Nom. Flow Rate	Max Discharge Head	Tank Size	List Price \$ Exc. GST
550063	SI-1850	Condensate Pump	1100l/hr	10m	3.8l	\$1,700.20

### SI1931

The Sauermann SI1931 pump is specifically designed to be installed on refrigerated display cabinets and cold store cabinets.

This model is a single piece unit with a 4.5 litre tank and is a very powerful membrane pump suited for applications of up to 4 refrigerated display cabinets. Built to last in stainless steel, this model has a ventilated motor, can run dry and has a built in safety switch. Slides easily underneath the refrigerated display cabinet with a minimum tank profile of 65.5mm. It also has an easy clip tank lid for ease of maintenance.



Cat. No.	Model No.	Description	Nom. Flow Rate	Max Discharge Head	Tank Size	List Price \$ Exc. GST
550058	SI-1931	Condensate Pump	650l/hr	20m	4.5l	\$2,015.82

## OEM Replacement

### SI2052

The Sauermann SI2052 pump is maintenance kit, specifically designed for replacing failed OEM centrifugal lifter pumps:

- 2 way and 4 way blow cassette units
- Ceiling mounted units
- Ducted air conditioning units

This model is a compact unit with a universal mounting bracket, float and standard length electrical cable. It is capable of pumping a maximum of 70 l/h and has a maximum discharge lift of 0.95m



Cat. No.	Model No.	Description	Nom. Flow Rate	Max Discharge Head	Max Immersion	List Price \$ Exc. GST
550059	SI-2052	Universal OEM Replacement Condensate Pump	70l/hr	0.95m	20mm	\$315.63



global brands - local service

www.actrol.com.au

**ACTROL**

Subject to change without notice



# Pumps

## Pump Accessories



### Sauermann

#### Inline Filter

The Sauermann ACC17010 inline filter is designed for applications or conditions on site that requires advanced protection against heavy particulates or pollutants that can cause damage to the system and/or reduce the longevity of the pump.

Applications such as:

- Industrial area with heavy dust particulate (workshops)
- Food preparation areas and bakeries etc (flour)
- Print rooms (print dust)

This inline filter is easy to install and comes with two male 6mm spigots.



Cat. No.	Part No.	Description	List Price \$ Exc. GST
550051	ACC17010	Inline Filter	\$53.03

#### Peristaltic Tube

The Sauermann PE5002 replacement tube is designed for replacing worn tubes and is easy to replace. Suitable for the PE5000, PE5100, PE5200 pump Model. Comes with 2 cable ties for a firm and secure fit. NB: Must be lubricated a silicone based lubricant (to prevent failure or early wear)



Cat. No.	Part No.	Description	List Price \$ Exc. GST
550049	PE-5002	Replacement Tube for Peristaltic Pumps	\$146.78

#### Peristaltic Head

The Sauermann PE5001 replacement head is designed for replacing pumps with burnt out motors, without the hassle of rewiring the complete unit again. Simply screw off the head and unclip the electrical cable. Clip in the new one and re-screw front face. Suitable for the PE5000, PE5100, PE5200 pump Model.



Cat. No.	Part No.	Description	List Price \$ Exc. GST
550116	PE-5001	Replacement Head for Peristaltic Pumps	\$538.67



HVACR  
SUPPLIES



**sauermann**





COMPLETE RANGE

WORLD LEADER

HIGH QUALITY

# Pumps

## Pump Accessories



### Sauermann

#### Float Detection Switch

The Sauermann ACC00601 float detection switch can be used as an additional safety alarm or to switch on or off the pump / device. The control switch has a mechanical float switch which can be used in a NO or NC position.



Cat. No.	Part No.	Description	List Price \$ Exc. GST
550118	ACC00601	Float Detection Switch	\$134.67

#### Sensor Extension Cable

The Sauermann ACC00705 sensor extension is used when the length between the pump and sensor needs to be increased. The extension cable comes with a female connector.



Cat. No.	Part No.	Description	List Price \$ Exc. GST
550121	ACC00705	Sensor Extension Cable	\$113.62

#### Check Valve

The Sauermann ACC00801 replacement 10mm check valve is a quick fit solution. Comes with o-ring.



Cat. No.	Part No.	Description	List Price \$ Exc. GST
550119	ACC00801	10mm Check Valve	\$46.30

#### Detection Sensor

The Sauermann SI2958 is a universal float detection sensor designed to suit most piston pumps. It comprises 3 switching levels:

- On = 16mm
- Off = 1mm
- High level alarm = 19mm



Cat. No.	Part No.	Description	List Price \$ Exc. GST
550115	SI-2958	Universal Float Detection Sensor	\$370.33

#### Adaptor Reducer

The Sauermann PE5003 is a reducer adapter suited for tubing installations when a reduction is required from 15mm. Steps down in various sizes to a minimum 6mm. Comes with rubber connector.



Cat. No.	Part No.	Description	List Price \$ Exc. GST
550117	PE5003	15mm to 6mm Adaptor Reducer	\$39.99

#### Anti Siphoning Device

The Sauermann ACC00216 anti siphoning device is designed and used for in installations when the discharge point is lower than the detector level which can cause siphoning through the pump. For 6mm hoses.



Cat. No.	Part No.	Description	List Price \$ Exc. GST
550123	ACC00216	Anti Siphoning Device	\$37.88

#### Inlet Adaptor

The Sauermann ACC02040 one size fits all adaptor can be used to connect two different diameter pipes together. Specifically designed for centrifugal tank pumps.



Cat. No.	Part No.	Description	List Price \$ Exc. GST
550124	ACC02040	Multi Size Inlet Adaptor	\$46.30

#### Rubber Inlet Adaptors

The Sauermann ACC00110 special kit can be used to connect two different diameter pipes together via rubber inlet adaptors, specially designed for centrifugal tank pumps. This kit comes with 6mm spigots.



Cat. No.	Part No.	Description	List Price \$ Exc. GST
550125	ACC00110	Rubber Inlet Adaptor Kit	\$63.13

#### Non Return Valves

The Sauermann ACC00805 pack of non return valves comprises 5 pieces of non return valves suitable for 6mm tubing.



Cat. No.	Part No.	Description	List Price \$ Exc. GST
550122	ACC00805	6mm Non Return Valves Pack of 5	\$140.06

global brands - local service

www.actrol.com.au

**ACTROL**

Subject to change without notice

360  
Section 7

© 2015 Actrol Parts Pty Ltd ABN: 93 142 654 564

# Pumps

## Evaporative Cooler Pumps



### CMG Fasco

JRM Pumps incorporate features based on a worldwide study and are manufactured in Australia using double coated winding wire produced and tested in the JRM plant, thus assuring a top quality product.

#### Features

- 240 V, 50 Hz encapsulated, shaded pole motor
- Double insulated motor does not require earthing
- Precision double shielded ball bearings
- Auto reset overload
- Stainless steel shaft
- Optional filter basket
- ABS plastic body mouldings
- Acetal impeller



#### Pumps

Cat. No.	Part No.	Description	Watts	Flow at 600mm Head	Flow at 1600mm Head	List Price \$ Exc. GST
550023	Model 38	Evaporative Cooler Pump	50	29.5l/m	23l/m	<b>\$182.33</b>
550024	Model 50		60	38l/m	30.5l/m	<b>\$195.64</b>

#### Accessories

Cat. No.	Part No.	Description	List Price \$ Exc. GST
550022	BAS/STR	Evaporative Cooler Filter Basket	<b>\$18.42</b>

ebmpapst

### EBM Papst

EBM-Papst have taken their proven ebm 40 JB pump design and improved it significantly. The powerful split-capacitor motor with high starting torque supports easy starts even after long off-periods. It is protected and self-cooling for longer lifetime. The improved design gives increased performance while using 20% less energy than the comparable evap pumps in the market. It replaces most other pumps on the market and its single point mounting enables quick exchange.

#### Features

- Reliable external rotor motor
- Performance improved by 20%
- 2 year warranty
- Low draft - requires minimum of only 57mm water depth
- Efficient – up to 20% less energy use
- Easy replacement of most evap pumps on the market
- Exclusive proven design for harsh Australian conditions



Cat. No.	Part No.	Description	Watts	Flow at 1m Head	Flow at 2m Head	List Price \$ Exc. GST
550017	Alpha Pump	Evaporative Cooler Pump	50	32l/m	25l/m	<b>\$168.88</b>



# Pumps



## Sump Dump

With the Sump Dump drainage system, evaporative coolers can now be operated with a hydraulically operated valve ensuring reliable closing and draining in one movement.

As an active part of the cooler, incorporating only one solenoid for both water isolation and drainage, the Sump Dump™ System ensures that:

- The unit is completely dry and clean when not in use
- The pads remain clean and odour free
- No residual water means no corrosion
- The absence of stagnant water means no algal build-up

### Kits

#### Kit Contents

- Complete retrofit dump valve unit
- 300mm SWC PVC drain adapter with O-ring
- 240V to 24V encapsulated transformer with 2 metre lead
- 24V solenoid
- 6mm water supply tube from solenoid to valve



Cat. No.	Part No.	Description	List Price \$ Exc. GST
550090	6001331	Dump Valve Kit	\$530.81



### Replacement Parts

Cat. No.	Part No.	Description	List Price \$ Exc. GST
550092	6001336	Dump Valve Body	\$179.54
550091	6001341	24V Solenoid with 6mm Straight Tube Connector	\$130.75
550089	6001334	240V to 24V Transformer with 2m Leads	\$126.84



## Little Giant Submersible Pumps

Small submersible epoxy encapsulated pumps for commercial, industrial and home use. Applications include statuary fountains, water displays, air conditioners, machine tool coolants, and many other applications where liquid must be transferred or recirculated.

#### Features

- Continuous operation
- Can be installed on any of five sides
- Motor overload protection on PE-2
- Filled with special oil that provides lifetime lubrication & rapid dissipation of heat through housing
- Sump type pick-up
- Removable inlet screen
- Epoxy encapsulated motor
- Operates fully submerged



Cat. No.	Part No.	Description	Flow at 300mm Head	Flow at 0mm Head	Max Water Head	Discharge Connection	List Price \$ Exc. GST
550035	PE-1H	Submersible Pump	9l/m	10l/m	1400mm	1/4" MNPT	\$477.88
550036	PE-2		15l/m	18l/m	2500mm	1/4" MNPT	\$575.93



# Noise & Vibration Control Products

## Refco

### Anti-Vibration Pads

Refco's AVP Pads are the latest generation in vibration dampening technology. AVP pads outperform cork or solid rubber pads by a margin greater than 3:1. This enhanced performance is due to the special composite foam centre. The rubber plates on top and on the bottom have opposing ribs to prevent the pad from moving under the vibrating machinery. The AVP pad is also much more durable than for example cork as the AVP is not affected by oils, chemicals or humidity.



Cat. No.	Part No.	Model No.	Description	Size: mm	List Price \$ Exc. GST
594063	4507241	AVP-4	Anti-Vibration Pad	101 x 101 x 22	\$25.38



## Mason

### Waffle Pad



Cat. No.	Part No.	Size : mm	Load Ratings:			List Price \$ Exc. GST
			Durometer	Load per 50 x 50 mm Sq.	Rated Deflection : mm	
591213	18 x 18 SW	457 x 457 x 19	50	82 kg	2.5	\$350.85
591212	R18 x 18 MSW	457 x 457 x 9.5	40	1.3	-	\$150.01



## Metalflex

### Tear Away Mounting Pads

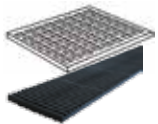


Cat. No.	Part No.	Nominal Dimensions : mm	List Price \$ Exc. GST
594052	ADG3310K	300 x 300 x 10	\$47.37
594053	ADG3315K	300 x 300 x 15	\$59.63



## Propipe

### Waffle Pad



Cat. No.	Nominal Dimensions : mm	List Price \$ Exc. GST
594051	450 x 450 x 8	\$52.31
594050	50 x 50 x 10	\$2.83



global brands - local service

Subject to change without notice

www.actrol.com.au

**ACTROL**

© 2015 Actrol Parts Pty Ltd ABN: 93 142 654 564

# Fasteners

## Self Drilling Screws

### Button Head



Cat. No.	Part No.	Pack Size	List Price \$ Exc. GST
615400	8 x 12mm-HP50	50	\$14.40
615402	8 x 16mm-HP50		\$14.40
615404	8 x 20mm-HP50		\$15.55
615406	8 x 25mm-HP50		\$15.55
615408	8 x 30mm-HP50		\$17.26

Cat. No.	Part No.	Pack Size	List Price \$ Exc. GST
615412	8 x 12mm-T500	500	\$58.20
615414	8 x 16mm-T500		\$74.92
615416	8 x 20mm-T500		\$75.52
615418	8 x 25mm-T500		\$70.95
615420	8 x 30mm-T500		\$83.30

### Hex Head



Cat. No.	Part No.	Pack Size	List Price \$ Exc. GST
615426	10 x 16mm-HP50	50	\$10.48
615428	12 x 20mm-HP50		\$23.06
615430	12 x 45mm-HP50		\$31.71

Cat. No.	Part No.	Pack Size	List Price \$ Exc. GST
615436	10 x 16mm-T500	500	\$77.13
615438	12 x 20mm-T500		\$117.19
615440	12 x 45mm-T500		\$178.90

### Pan Head



Cat. No.	Part No.	Pack Size	List Price \$ Exc. GST
615444	8 x 12mm-HP50	50	\$8.66
615446	8 x 16mm-HP50		\$9.00
615448	8 x 20mm-HP50		\$9.00
615450	8 x 25mm-HP50		\$10.25

Cat. No.	Part No.	Pack Size	List Price \$ Exc. GST
615456	8 x 12mm-T500	500	\$49.37
615458	8 x 16mm-T500		\$55.49
615460	8 x 20mm-T500		\$55.49
615462	8 x 25mm-T500		\$67.86

### Wafer Head



Cat. No.	Part No.	Pack Size	List Price \$ Exc. GST
615470	10 x 16mm-HP50	50	\$11.52
615472	10 x 22mm-HP50		\$14.40
615474	10 x 30mm-HP50		\$20.19

Cat. No.	Part No.	Pack Size	List Price \$ Exc. GST
615478	10 x 16mm-T500	500	\$63.39
615480	10 x 22mm-T500		\$77.84
615482	10 x 30mm-T500		\$87.60

### Sleeve Anchors



Cat. No.	Part No.	Pack Size	List Price \$ Exc. GST
615490	8 X 40mm-HP10	10	\$11.25
615492	10 X 50mm-HP10		\$15.67
615494	10 X 97mm-HP10		\$29.02





# Fasteners

## Nylon Anchors



Cat. No.	Part No.	Pack Size	List Price \$ Exc. GST
615500	5 x 25mm-HP50	50	\$17.33
615502	5 x 40mm-HP50		\$19.76
615504	6.5 x 25mm-HP50		\$19.76
615506	6.5 x 40mm-HP50		\$34.59

Cat. No.	Part No.	Pack Size	List Price \$ Exc. GST
615510	5 x 25mm-T500	500	\$158.55
615512	5 x 40mm-T500		\$201.75
615514	6.5 x 25mm-T250	250	\$115.30
615516	6.5 x 40mm-T250		\$126.84

## Wall Anchors

### Nylon

Cat. No.	Part No.	Pack Size	List Price \$ Exc. GST
615520	NWM-HP50	50	\$31.71

Cat. No.	Part No.	Pack Size	List Price \$ Exc. GST
615522	NWM-T500	500	\$259.40

### Metal



Cat. No.	Part No.	Pack Size	List Price \$ Exc. GST
615521	MWM-HP50	50	\$54.79

Cat. No.	Part No.	Pack Size	List Price \$ Exc. GST
615523	MWM-T500	500	\$403.54

## Driver Bits



Cat. No.	Part No.	Description	Length	Pack Size	List Price \$ Exc. GST
615540	DB-PH-NO2-25MMHP10	Phillips No 2	25mm	10	\$29.79
615541	DB-PH-NO2-25MMHP10	Phillips No 2	50mm		\$43.19
615542	DB-HH-5/16-HP10	Hex Head 5/16"			\$144.54
615543	DB-HH-5/16-HP2	Hex Head 5/16"		2	\$34.59

## Aluminium Rivets



Cat. No.	Part No.	Diameter	Length mm	Grip Range mm	Pack Size	List Price \$ Exc. GST
615552	AR4-2-HP50	1/8"	6.3	3.2	50	\$9.93
615554	AR4-3-HP50		7.9	4.8		\$10.48
615556	AR4-4-HP50		9.5	6.4		\$11.15
615560	AR4-6-HP50		12.7	9.5		\$10.48
615566	AR5-2-HP50	5/32"	6.3	3.2		\$9.83
615568	AR5-3-HP50		7.9	4.8		\$10.98
615570	AR5-4-HP50		10.4	6.4		\$11.75
615572	AR5-6-HP50		13.5	9.5		\$12.36

Cat. No.	Part No.	Diameter	Length mm	Grip Range mm	Pack Size	List Price \$ Exc. GST
615582	AR4-2-T500	1/8"	6.3	3.2	500	\$37.01
615584	AR4-3-T500		7.9	4.8		\$37.01
615586	AR4-4-T500		9.5	6.4		\$40.11
615590	AR4-6-T500		12.7	9.5		\$49.37
615596	AR5-2-T500	5/32"	6.3	3.2		\$63.45
615598	AR5-3-T500		7.9	4.8		\$67.86
615600	AR5-4-T500		10.4	6.4		\$55.49
615602	AR5-6-T500		13.5	9.5		\$67.86



global brands - local service

www.actrol.com.au

**ACTROL**

Subject to change without notice

365  
Section 7

© 2015 Actrol Parts Pty Ltd ABN: 93 142 654 564

7

# Flexitrak

*Your Complete Refrigerant Management Solution*



FlexiTrak, Actrol's complete refrigerant management solution, incorporates numerous helpful features well suited to assist with ARC compliance such as:

- Detailed Cylinder Tracking and Usage
- Detailed Refrigerant Purchasing Records

## Keep Your Eye on the Gas



Reports are available as summaries on cylinder usage or detailed usage. All refrigerant purchases are recorded including information such as:

- Tradesperson
- Date of Transaction
- Invoice Number
- Job Number / Name
- Refrigerant Type and Volume
- Detail of Refrigerant Purchased
- Availability

Refrigerant trading authorisation AU24898

**actrol.com.au**

**ACTROL**



# Air Filtration

## Filtratech

### Disposable Filters



Cat. No.	Model No.	Size : mm			Capacity : L/s			Pressure Loss : Pa			Performance Rating	List Price \$ Exc. GST
		Height	Width	Depth	Low	Medium	High	Low	Medium	High		
627140	14x20x1	356	495	22	274	458	581	50	87		G4	\$18.73
627142	15x20x1	368			293	490	601					\$18.73
627150	16x20x1	394			313	523	643					\$18.73
627151	20x20x1	495			392	655	808					\$21.06
627152	12x24x1	293	595		282	472	575					\$18.52
627153	20x24x1	495			471	787	971					\$22.96
627154	24x24x1	595			565	945	1168					\$25.90
627141	14x25x1	356	622		343	574	730					\$20.83
627143	16x25x1	394			392	655	808					\$21.06
627155	20x25x1	495			490	819	1016					\$23.77
627148	10x20x2	248	495	48	156	254	323	32	65	90		\$22.72
627149	12x12x2	293	293		137	223	283					\$31.58
627146	12x20x2	293	495		236	394	492					\$22.51
627156	14x20x2	356			274	458	572					\$26.09
627137	15x20x2	368										\$27.33
627157	16x20x2	394			313	523	654					\$27.33
627145	18x20x2	445			353	589	736					\$29.88
627158	20x20x2	495			392	655	818					\$31.58
627159	12x24x2	293	595		282	472	589					\$25.05
627138	14x24x2	356			338	550	700					\$37.04
627144	16x24x2	394			375	610	773					\$30.53
627160	18x24x2	445			423	708	883					\$32.42
627161	20x24x2	495			471	787	982					\$34.72
627162	24x24x2	595			565	945	1179					\$38.95
627139	14x25x2	356	622		354	575	730					\$29.68
627163	16x25x2	394			392	655	818					\$31.58
627164	20x25x2	495			490	819	1022					\$36.62
627147	20x30x2	495			588	983	1229					\$59.55
627165	16x20x4	394	495	98	313	523	654	30	50	75		\$52.40
627166	18x20x4	445			353	589	736					\$69.63
627167	20x20x4	495			392	655	818					\$59.77
627168	12x24x4	293	595		282	472	589					\$47.76
627169	18x24x4	445			423	708	883					\$59.97
627170	20x24x4	495			471	787	982					\$65.04
627171	24x24x4	595			565	945	1179					\$69.63
627172	16x25x4	394	622		392	655	818					\$59.31
627173	20x25x4	495			490	819	1022					\$67.74



global brands - local service

[www.actrol.com.au](http://www.actrol.com.au)

**ACTROL**

Subject to change without notice

367  
Section 7

© 2015 Actrol Parts Pty Ltd ABN: 93 142 654 564

7

# Air Filtration



## Space Filters

### Deep Bed Bag Filters

Available in various sizes, styles and efficiencies deep bed bag filters are suitable for a wide variety of applications.

#### SpacePeak

The SpacePeak bag filter is made to fit a supporting inner basket and outer mounting frame.



Cat. No.	Part No.	Description	Dimensions: mm	Rating	List Price \$ Exc. GST
628061	SPACEPEAK664	Four Pyramid Bag Filter	610 x 610 x 380	F5	\$40.36
628062	SPACEPEAK634	Two Pyramid Bag Filter	610 x 305 x 380	F5	\$33.45

#### SpacePak

The SpacePak bag filter comes with a self-supporting wire header. Using this filter with the wire header eliminates the need for the inner wire basket.



Cat. No.	Part No.	Description	Dimensions: mm	Rating	List Price \$ Exc. GST
628063	SPACEPAK663W	Three Pocket Bag Filter with Wire	610 x 610 x 570	F5	\$74.95
628064	SPACEPAK632W	Two Pocket Bag Filter with Wire	610 x 305 x 570	F5	\$57.65

#### SpaceCube

The SpaceCube deep bed filters are ideal general-purpose filters for applications where high efficiency and long duty cycles are required. These filters offer superior performance to typical roll type and metal viscous filters. The key to the excellent performance of these filters is their shape. The SpaceCube is a pyramid within a cube in construction.



Cat. No.	Part No.	Description	Dimensions: mm	Rating	List Price \$ Exc. GST
628065	SPACECUBE66	Cube Style Bag Filter	610 x 610 x 600	F5	\$80.70
628066	SPACECUBE63	Cube Style Bag Filter	610 x 305 x 600	F5	\$51.90

#### SpaceCone

The SpaceCone deep bed filters are ideal general-purpose filters for applications where high efficiency and long duty cycles are required. These filters offer superior performance to typical roll type and metal viscous filters. The key to the excellent performance of these filters is their shape. The SpaceCone is a cone within a truncated cone.



Cat. No.	Part No.	Description	Dimensions: mm	Rating	List Price \$ Exc. GST
628067	SPACECONE66	Cone Style Bag Filter	610 x 610 x 660	F5	\$72.06
628068	SPACECONE63	Cone Style Bag Filter	610 x 305 x 660	F5	\$51.90

#### Multi-Pocket High Efficiency Bag Filters

PrecisionPak extended surface bag filters are designed for use in most commercial or industrial HVAC systems where medium to high efficiency filtration is required and are manufactured from micro-fine synthetic media.



Cat. No.	Part No.	Description	Dimensions: mm	No. of Pockets	Rating	List Price \$ Exc. GST
628070	PAP665S4422	Multi-Pocket Bag Filter	610 x 610 x 559	6	F6	\$144.12
628071	PAP365S2422	Multi-Pocket Bag Filter	610 x 305 x 559	3	F6	\$92.24
628072	PAP685S4422	Multi-Pocket Bag Filter	610 x 610 x 559	6	F7	\$155.66
628073	PAP385S2422	Multi-Pocket Bag Filter	610 x 305 x 559	3	F7	\$100.89
628074	PAP895S4422	Multi-Pocket Bag Filter	610 x 610 x 559	8	F8	\$201.78
628075	PAP495S2422	Multi-Pocket Bag Filter	610 x 305 x 559	4	F8	\$126.84



global brands - local service

[www.actrol.com.au](http://www.actrol.com.au)

**ACTROL**

Subject to change without notice

368  
Section 7

© 2015 Actrol Parts Pty Ltd ABN: 93 142 654 564