



**THE
PERFECT
CLIMATE.**

kaden°
HEATING + COOLING

Welcome to The Gauge. Actrol’s industry update bringing you the latest news and products in HVAC-R.
Enjoy!

Contents

Extol-VP	3
Reece Grant	4
Cabero Pro	5
Kaden Evaporative Coolers	6
Refco – Condensate Pumps	8
Emerson + News	10
Join The Club	11

EXTOL-VP

Don't be crude, keep it clean with Extol-VP

Specialty refrigeration oils manufacturer Extol has launched a new semi-synthetic lubricant, especially formulated for vac pumps. Using highly hydrocracked and isodewaxed oil and combined with an additive package, Extol VP is designed to withstand the toughest conditions encountered in recirculating systems with a range of features and benefits:

- Excellent oxidative stability – Longer system life
- Rust and Corrosion protection – Enhanced system reliability and reduced down-time
- Traction properties conserve energy – reduce internal fluid friction



Synthetic Oils Vs. Mineral Oils

Mineral Oil

Mineral oils are poorer quality and are merely a very basic conventional oil, which are not beneficial to the lubrication process. These have many impurities which cause poor flow in cold temperatures and produce by-products which reduce lubrication, efficiency, and wear resistance.

Synthetic Oil

Synthetic oil or semi-synthetic oils are highly refined, with many impurities removed through the process of chemical synthesis, ensuring they can circulate quicker. Semi Synthetic oils have been further refined, distilled, purified and broken down through a process of chemical engineering.

Why choose Synthetic

- Excellent viscosity/Temperature properties and shear stability for improved wear protection

- Low oxidation at high-temperatures and good thermal stability reduce deposit formation
- Good cold-temperature flow reduces energy consumption at low temperatures
- Significantly longer service life than the best mineral oils when stressed by temperature
- Low volatility reduces consumption
- Traction properties conserve energy reduce internal fluid friction

Features and Benefits:

Excellent oxidative stability – Longer system life

Rust and Corrosion protection – Enhanced system reliability and reduced down-time

Demulsibility and excellent lubricity – increased efficiency and reduced cost of operation

Low volatility – Reduced maintenance and top offs



the
reece
grant

Create Brighter Futures



The Reece Grant is committed to supporting initiatives in local and international communities, and helping apprentices and the youth of Australia gain important vocational skills to benefit their futures.



ABROAD

Aiding communities worldwide

A great opportunity to transform the health and wellbeing of entire communities across the world.



LOCAL

Supporting Australian projects

Every day we see trades making a difference. Here's your chance to help improve the lives of those less fortunate.



NEXT GEN

Elevating the next generation

By supporting our apprentices, we can arm the youth of today with the skills to make a difference tomorrow.

Learn how you can support healthier, brighter futures for the next generation, here and abroad.

reecegrant.com.au

Cabero Pro in Action



We think the Cabero Pro is one of the most efficient and user-friendly evaporators on the market, but don't just take our word for it! We asked Melbourne customer Adrian to try one out at his latest jobs and report back. Here's what he had to say.

Tell us about the install:

For this job I decided to install the Cabero Pro rather than a standard evaporator and I also decided to use MaxiPro press fittings instead of welding. I saved an entire day in the factory prepping with these evaporators and it only took me half a day for the pipework with the MaxiPro instead of the usual full day of welding.

How was the process:

It was heaps easier to install than a normal evaporator and mechanical valve. I could just take it straight to site already fitted, which saved so much time. All I had to do was install the unit, press the pipe, fit the evaporator, charge it, get the pressure control to click over and have it running. I went down to the evaporator to set the gas and superheat and the TX valve and it was done! It was also great to try the electronic TX valve to see how much time I could save. I'll definitely be ordering a few more Cabero Pros in the coming weeks for use in a couple of cool room and freezer room jobs. I'm also looking forward to seeing the energy savings of these installs over the coming months.

What surprised you the most with the install?

Some of the best things about the Cabero Pro is that it doesn't have the drain pan already fitted and it has a nice flat aluminum base so you can lift it easily without damaging the evaporator. I also found using the fitted evaporator with the MaxiPro to be a much safer option during the installation process. They're a great combination.

Here are the top 5 reasons we think the Cabero Pro is the ideal option for your next evaporator installation job:

1. Quick & easy to install

No welding required with a state of the art electronic expansion valve factory fitted.

2. Fast commissioning (cost savings)

Desired temperature will be reached faster and can be pre-set, meaning you can set and forget.

3. Digital superheat and fault display

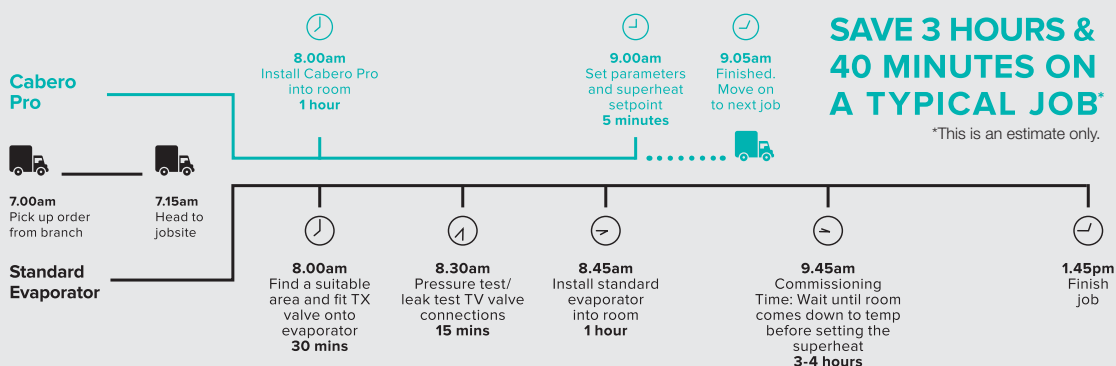
Easy fault diagnosis, providing you with more information.

4. Big energy savings

Electronic TX valve gives you more accurate superheat control, resulting in less energy used.

5. Fast clip-on access panels

Save time, leaving your screw driver in the tool bag.



Enjoy the perfect climate all year round

Introducing Kaden's new range of wall mounted air conditioners, now available exclusively at Actrol, Reece HVAC and Metalflex.

There's nothing like relaxing in the comfort of cool on a sweltering hot day, or cosying up on a chilly winter morning. With Kaden's new range of reverse cycle wall mounted air conditioners, your customers can now enjoy the perfect climate all year round.

Engineered with Australian conditions in mind, we're pretty excited to be stocking this new generation of wall mounted air conditioners. Designed to be compact without compromising on functionality, we reckon these guys offer the perfect heating and cooling solution for your next job.

Kaden air conditioners are effortlessly simple to use and easy to install, combining innovative features with intelligent design.

Peace of mind

Kaden is committed to total customer care, offering market-leading warranties and full after sales support. The wall mounted air conditioner range comes with a full 5-year warranty on parts and labour so your customers can have confidence in their Kaden for many years to come.



Comfort



Health



**Energy
Saving**



Reliability



More

Kaden Wall Mounted Air Conditioner Range

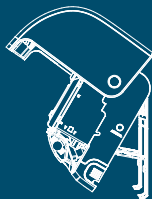
MAKING INSTALLS EASY.



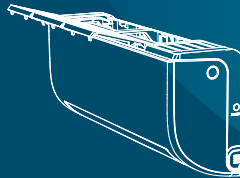
Lift supports provide easier access to the back of the unit.



Front panel locks open for easy access to internals.



Removable filter is extracted without having to open the unit.



MODELS AVAILABLE 2.6kW | 3.5kW | 5.0kW | 7.0kW | 8.0kW



kaden°

kadenair.com.au

THE GAUGE Issue 08 7



Changing the game in condensate pumps

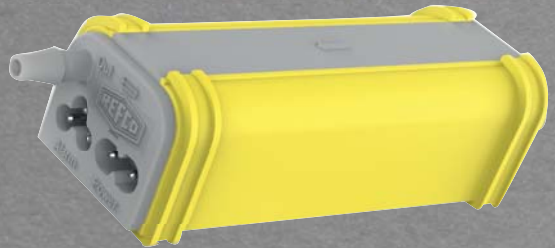
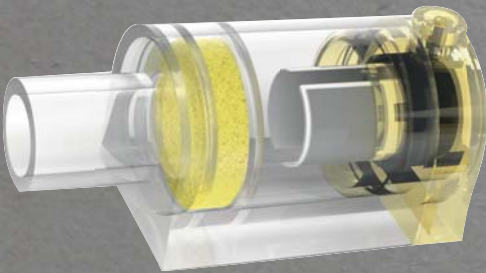
Refco's latest range of universal condensate pumps are now available at Actrol, Reece HVAC and Metalflex branches. Full of custom features, the new Refco Combi and Gobi ii pumps cover a massive flow rate, making them capable of handling a 1.75kW air conditioner to a 35kW air conditioner.

Considered the strongest and quietest condensate pumps on the market today, the Combi and Gobi II

come with a range of unique features including digital water sensors, universal voltage and user configurable flow. Utilising the latest in new pump technology, Refco's range don't contain pistons that can easily block, making them the fail-safe solution for your next job.

The versatility of the range also means you only need a single product on hand to fulfill your needs, rather than keeping an array of pumps in the van at all times. Head to your nearest Actrol, Reece HVAC or Metalflex to check them out for yourself.

COMBI



Gobi II



6 Reasons why you should choose a REFCO pump



Quiet mode

Installer configurable pump performance using dip-switches to optimize each individual installation for the best performance and sound parameters.



Diagnostic LED

Patented two colour long-life LED to ensure correct initial installation and to assist in diagnostics on future service calls.



USB connection

Patented access for wholesalers or installing contractors to review pump history.



Digital sensor

Unique digital water level sensor with no moving parts to get stuck or clogged.



Universal application

Widest application range of interior/exterior mount pumps in the market from 6,000 Btu/H to 120,000 Btu/H (1.75kW to 35kW).



Integrated replaceable 10 A fuse

Factory installed replaceable 5 x 20mm 10A glass fuse.

9 more reasons to choose REFCO



Optional wireless access

Wireless connection with a smart-phone to check and diagnose hard to access pumps.



10AMP alarm

Patented integrated 10A replaceable fuse for NO or NC alarm circuit protection.



Universal Voltage

Power input from 100 to 240 VAC 50/60 Hz for single part number world wide applications.



Soft start

This pump has over 40 speeds and will always begin softly to improve electrical efficiency and to minimise customer noise complaints.



Wet start

Patented dual slope condensate tray to prevent noisy dry pump operation and to trap damaging foreign debris away from pump filter.



Silent run

Quietest condensate pumps on the market with less than 20dBA at 1m. Swiss National Laboratory EMPA sound certified. (19dBA at 1m according to ENI903744)



Star tube

Patented pulsation isolating discharge tube to prevent contact vibration noise.



Stop siphon

Integrated connection device to assist with challenging condensate drain line installation



Check valve

Built-in one way non-return valve to prevent water backflow through pump.

Welcome to the family Emerson

We are thrilled to announce that our Actrol stores are now the exclusive stockists of the Emerson Flow range. Emerson is a recognised global leader in the refrigeration industry, employing 74,000 staff and owning more than 1,800 patents.

As sole distributors of Emerson Flow, we'll be stocking a range of products including driers, TX valves, drier shells, oil separators, ball valves and solenoid valves. And to make things even easier for you, we'll be carrying this range in our distribution centres across the country, ensuring great stock levels and greater availability for you.

For more information about the Emerson Flow range, head to your local Actrol store to chat to one of our branch staff.



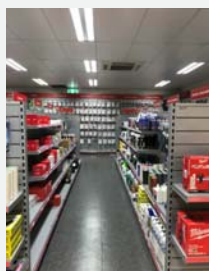
News

Penrith – Moved – Unit 1/10
 Roberston Place, Jamisontown,
 NSW, 2750

Karratha – New branch – 14 Krane
 Circle, Pegs Creek, WA, 6714
 (Image 1456)

Bendigo – Moved – 127 Breen
 Street, Bendigo, VIC, 3555
 (image 135528)

Taren Point – received a facelift!



JOIN THE CLUB



For a chance to win
your share of
OVER \$5,000
worth of prizes.

The footy's back and so is your opportunity
to be part of the 2018 Actrol Footy Tipping
Competition. So drop into your local branch
and sign up today.



www.actrol.com.au/tipping

Disclaimer – This competition is open to Reece Group Trade
Account customers, staff and their immediate families only.
LTPM/17/02619 & ACT TP 17/02590

Milwaukee

ACTROL™

February 2018 – Issue 08

 facebook.com/actrolparts

Valid to 01/02/18 until 01/04/18 or while stocks last. Account holders only.
Photos for illustration purposes only. *Pricing excludes GST.

ACTROL™

actrol.com.au